



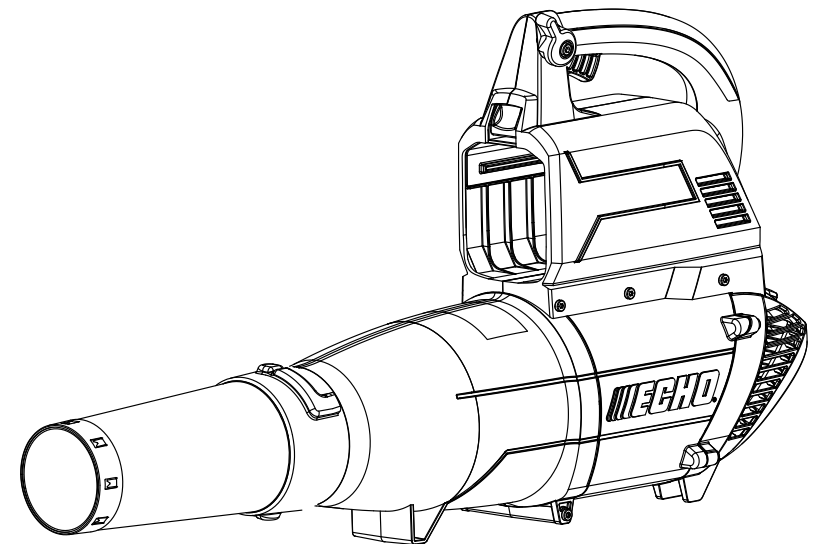
PARTS CATALOG

CBL-58V

58 Volt Blower

MANUFACTURING NUMBER

107946001



ECHO, INCORPORATED

400 Oakwood Road, Lake Zurich, Illinois 60047

WWW.ECHO-USA.COM

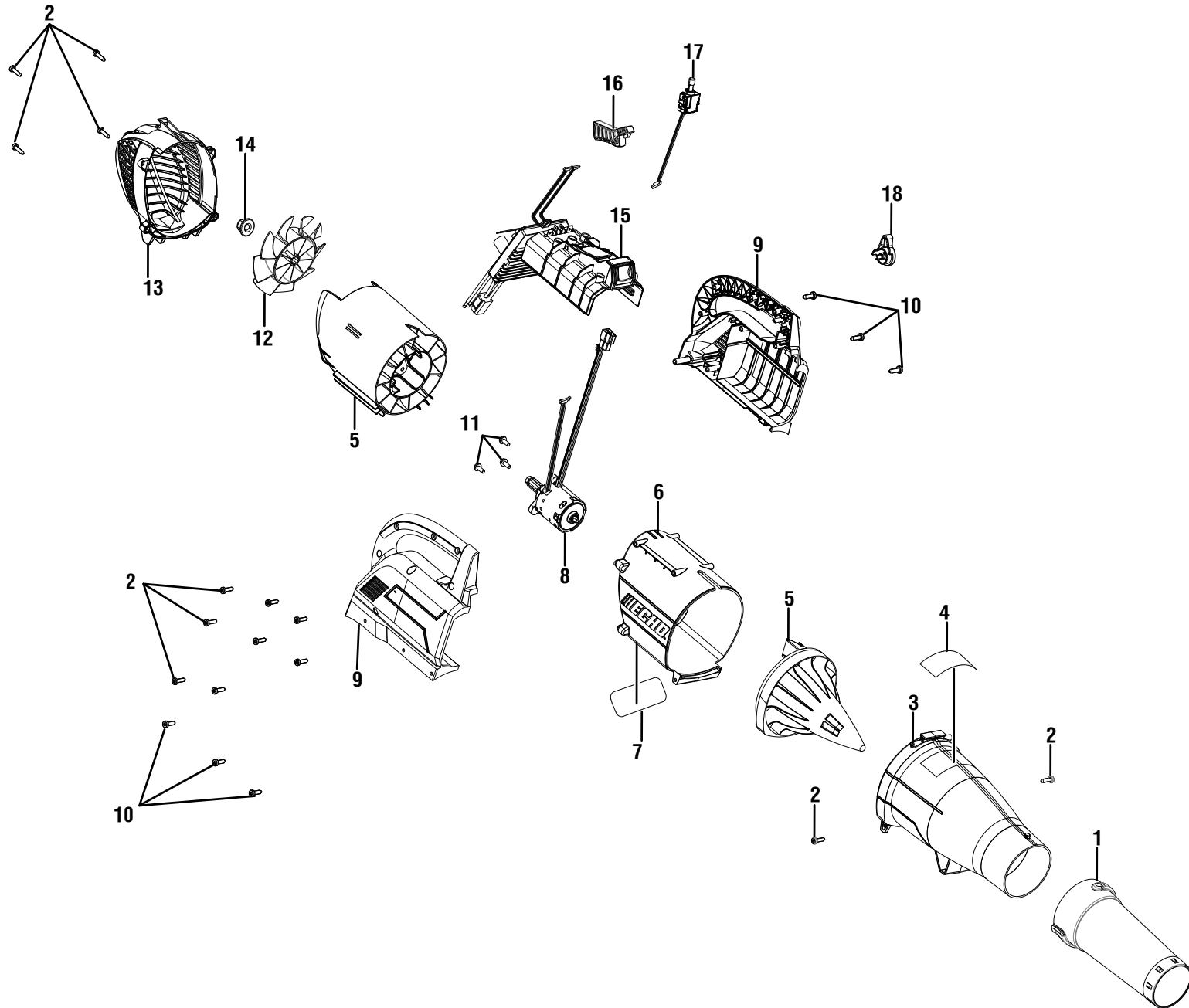
©2018 ECHO, Incorporated. All Rights Reserved

99922205260 (TTI#991000278R)

3-1-18

(Rev:05)

ECHO 58 VOLT BLOWER – ITEM NUMBER CBL-58V



ECHO 58 VOLT BLOWER – ITEM NUMBER CBL-58V

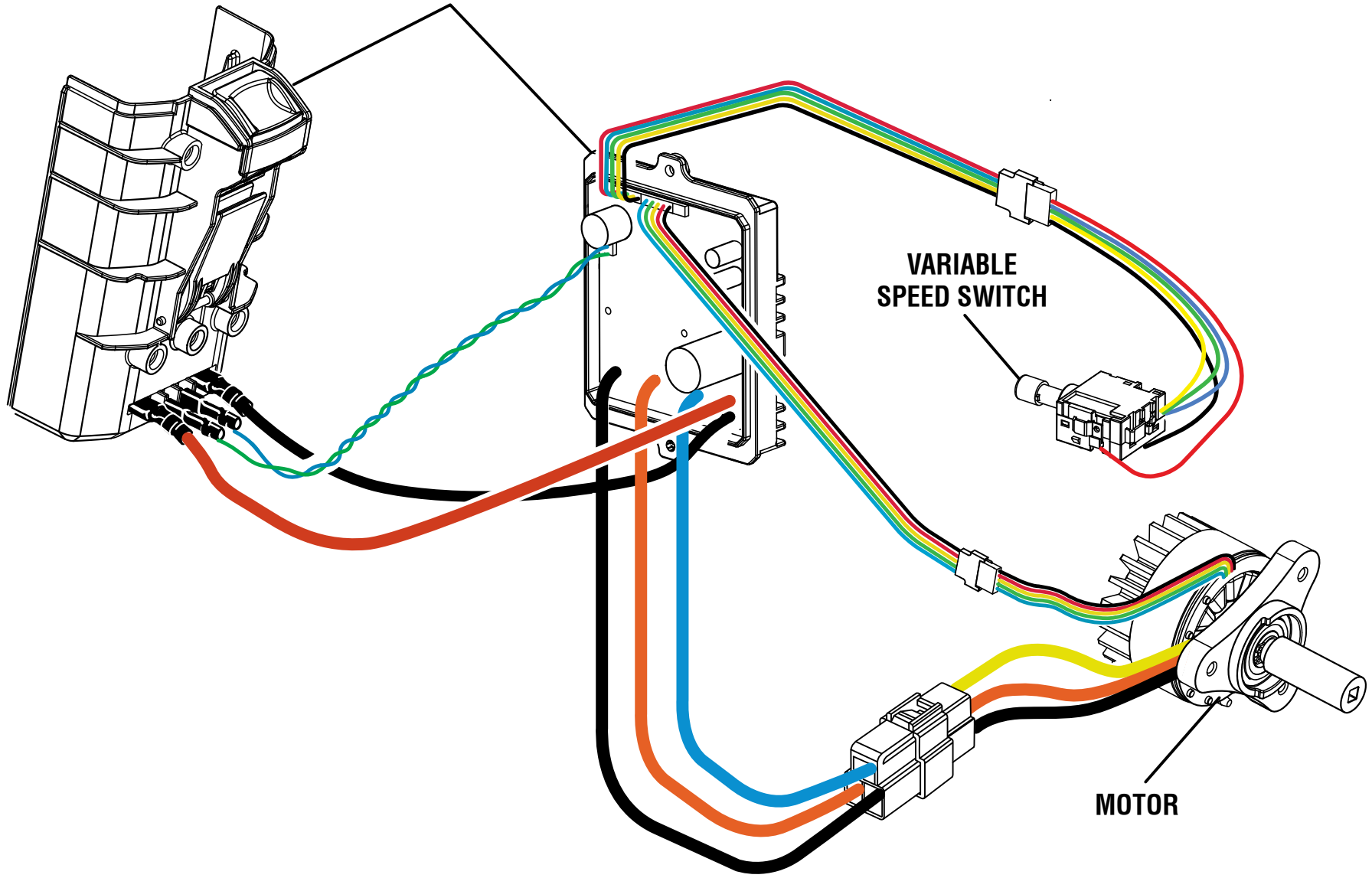
The model number will be found on a label attached to the motor housing. Always mention the model number and manufacturing number in all correspondence regarding your **BLOWER** or when ordering repair parts.

PARTS LIST

KEY NO.	PART NUMBER	DESCRIPTION	QTY
1	203484001	Nozzle and Scraper Assembly	1
2	662051002	Screw (M5, T25 Torx)	14
3	203483001	Outlet Housing (Inc. Key No. 4).....	1
4	940657151	Warning Icon Label	1
5	380003001	Tailcone and Guide Vein Assembly	1
6	203482001	Motor Housing Assembly (Inc. Key No. 7)	1
7	941588072	Data Label	1
8	742172001	Motor Assembly	1
9	380001001	Housing Assembly	1
10	662065001	Screw (M5 x 15 mm, T25 Torx)	6
11	662052002	Screw (M5 x 8 mm, T25 Torx)	3
12	528326001	Fan w/Insert	1
13	528322001	Guard Inlet.....	1
14	678128002	Lock Nut (M8 x 1.25).....	1
15	203486001	Circuit Board & Battery Carriage Assembly	1
16	528320001	Trigger Button	1
17	760952004	Variable Speed Switch	1
18	203485001	Speed Adjustment Knob Assembly	1
 Not Shown:			
	000998945DG9	58V Battery Pack (CBP-58V20, Not Included)	
	000998946DG9	58V Battery Pack (CBP-58V40, Not Included)	
	140330001	58V Charger (CBC-58V, Not Included)	
	991000278	Operator's Manual (Echo #99922205261)	

ECHO 58 VOLT BLOWER – ITEM NUMBER CBL-58V

CIRCUIT BOARD AND BATTERY
CARRIAGE ASSEMBLY



VARIABLE
SPEED SWITCH

MOTOR

WIRING DIAGRAM