



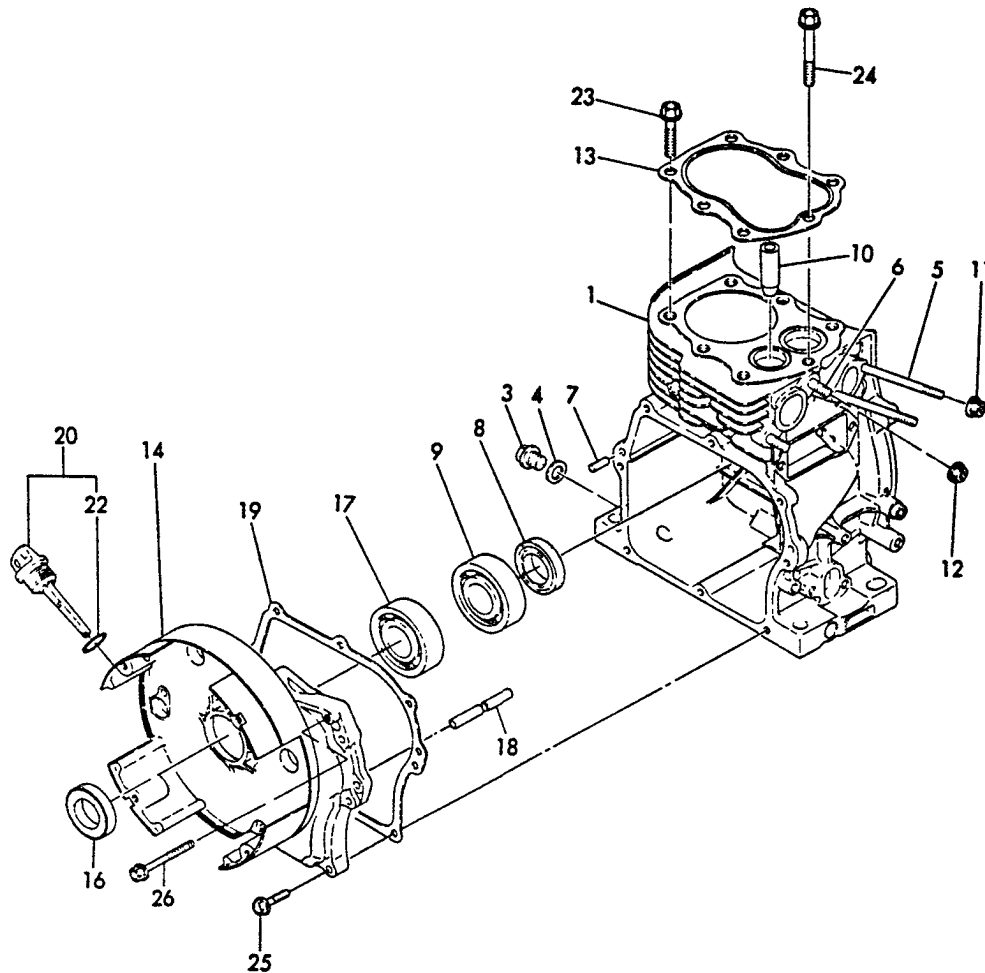
PARTS CATALOGUE

EG-2300



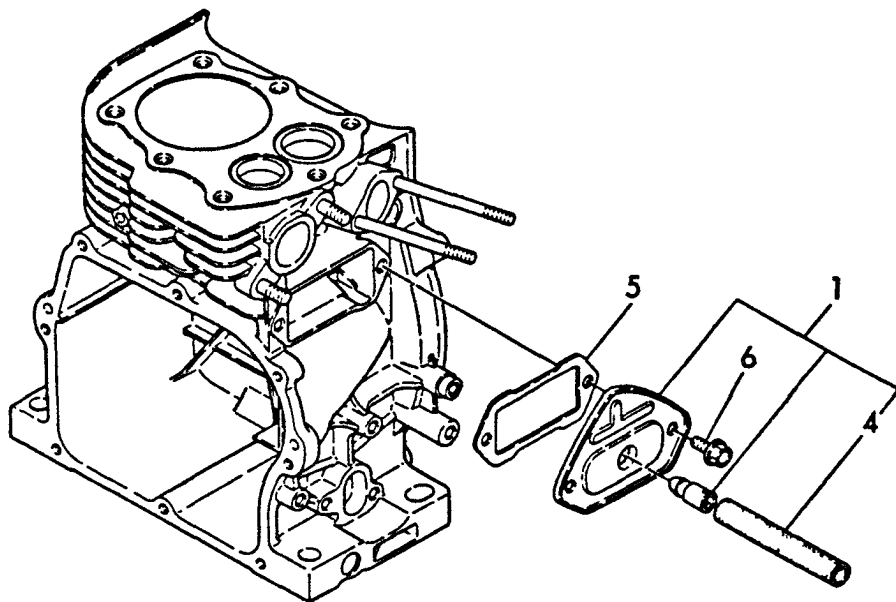
898 595-8046 0

1 CYLINDER BODY



REF. NO.	LEV. 0	PART NO.	DESCRIPTION	-----Q'TY-----					
				(A)	(B)	(C)	(D)	(E)	(F)
1	.	Y 760770-01560	BODY ASSY, CYLINDER	1					
3	..	Y 160610-01690	PLUG, DRAIN	1					
4	..	Y 104200-59170	GASKET 12	1					
5	..	Y 160610-04570	BOLT M6X70	2					
6	..	Y 26216-080182	BOLT M6X18	2					
7	..	Y 22312-060160	PARALLEL PIN 6X16	2					
8	..	*REF. 8=7	OIL SEAL	1					
9	..	*REF. 8=8	BEARING	1					
10	..	*REF. 5=6	VALVE GUIDE	1					
11	..	*REF. 6=10	NUT M6	2					
12	..	*REF. 6=19	NUT M8	2					
13	.	Y160710-01330	GASKET, CYL. HEAD	1					
14	.	Y760770-01510	COVER ASSY, SIDE	1					
16	..	*REF. 8=7	SEAL, OIL	1					
17	..	*REF. 8=8	BEARING	1					
18	..	*REF. 14=1	SHAFT, GOVERNOR	1					
19	.	Y160710-01410	GASKET, SIDE COVER	1					
20	.	Y160710-01760	CAP ASSY, LO FILLER	1					
22	..	Y24311-000180	O-RING P18	1					
23	.	Y160610-04170	BOLT M8X38	4					
24	.	Y160610-04210	BOLT M8X65	3					
25	.	Y 26476-060252	BOLT M6X25	8					
26	.	Y 26476-060552	BOLT M6X55	1					

2 BREATHER



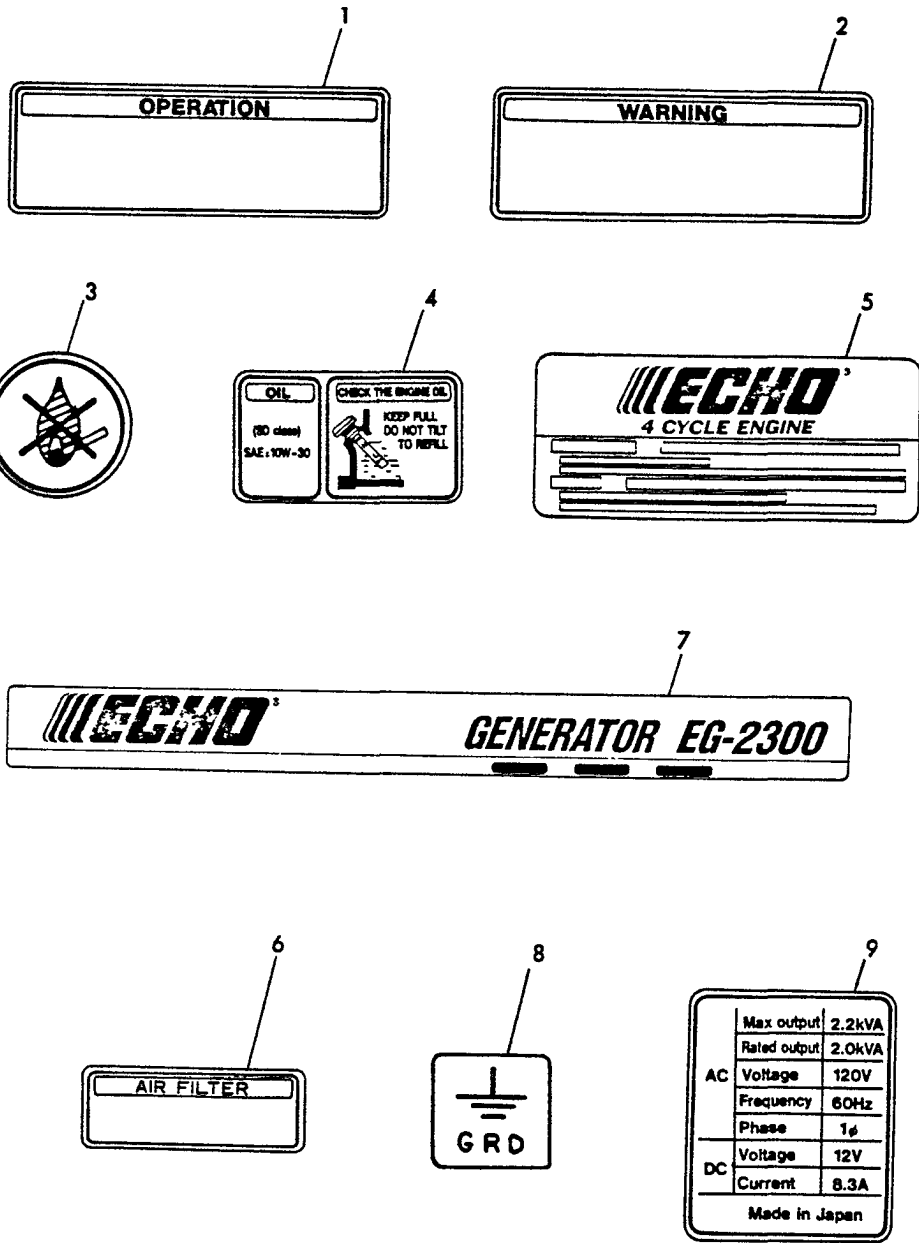
+-----+
 | 1A03 |
 | (1A01) |
 +-----+

(2) BREATHER

(A)=EG2300 (D)=
 (B)= (E)=
 (C)= (F)=

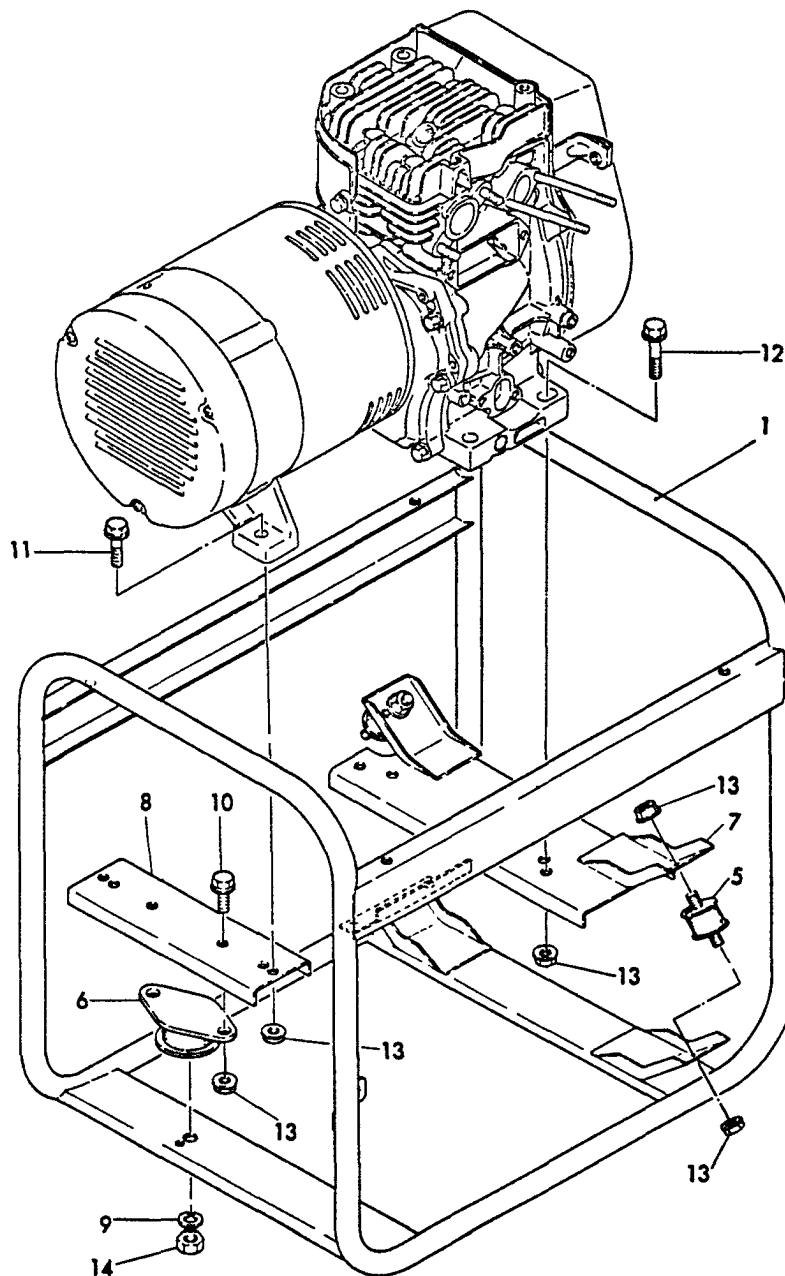
REF. NO.	LEV. 0	PART NO.	DESCRIPTION	-----Q'TY-----					
				(A)	(B)	(C)	(D)	(E)	(F)
1	.	Y 160710-03010	BREATHER ASSY	1					
4	..	Y 160710-03180	PIPE, BREATHER	1					
5	.	Y 160710-03070	GASKET	1					
6	.	Y 26476-060142	BOLT M6X14	2					

3 LABELS



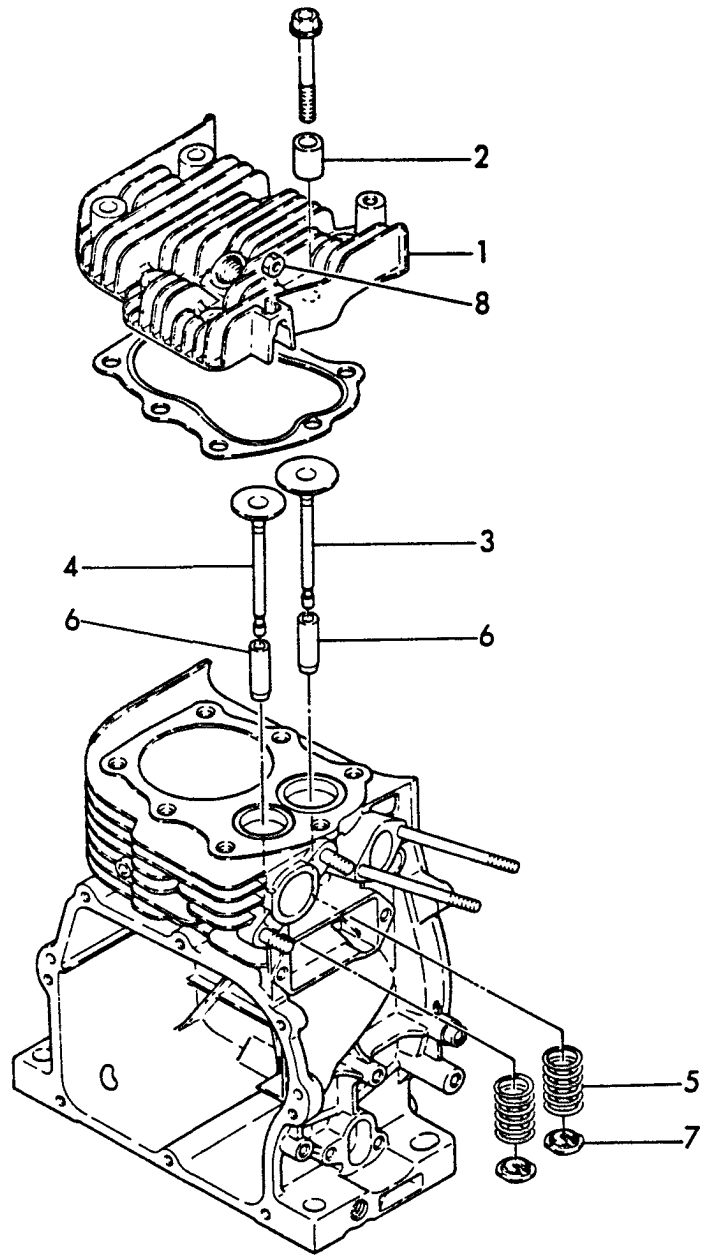
REF. NO.	LEV. 0	PART NO.	DESCRIPTION	-----Q'TY-----					
				(A)	(B)	(C)	(D)	(E)	(F)
1	.	Y183621-07250	LABEL, OPERATION	1					
2	.	Y183210-07260	LABEL, WARNING	1					
3	.	Y183210-07270	LABEL, NON FIRE	1					
4	.	Y183210-07290	LABEL, OIL	1					
5	.	Y160671-07370	LABEL(ECHO)	1					
6	.	Y183210-07370	LABEL, AIR CLEANER	1					
7	.	Y183720-07180	LABEL(EG2300)	1					
8	.	Y183210-07390	LABEL, EARTH	1					
9	.	Y183720-07530	LABEL, GENERATOR	1					

4 FRAME



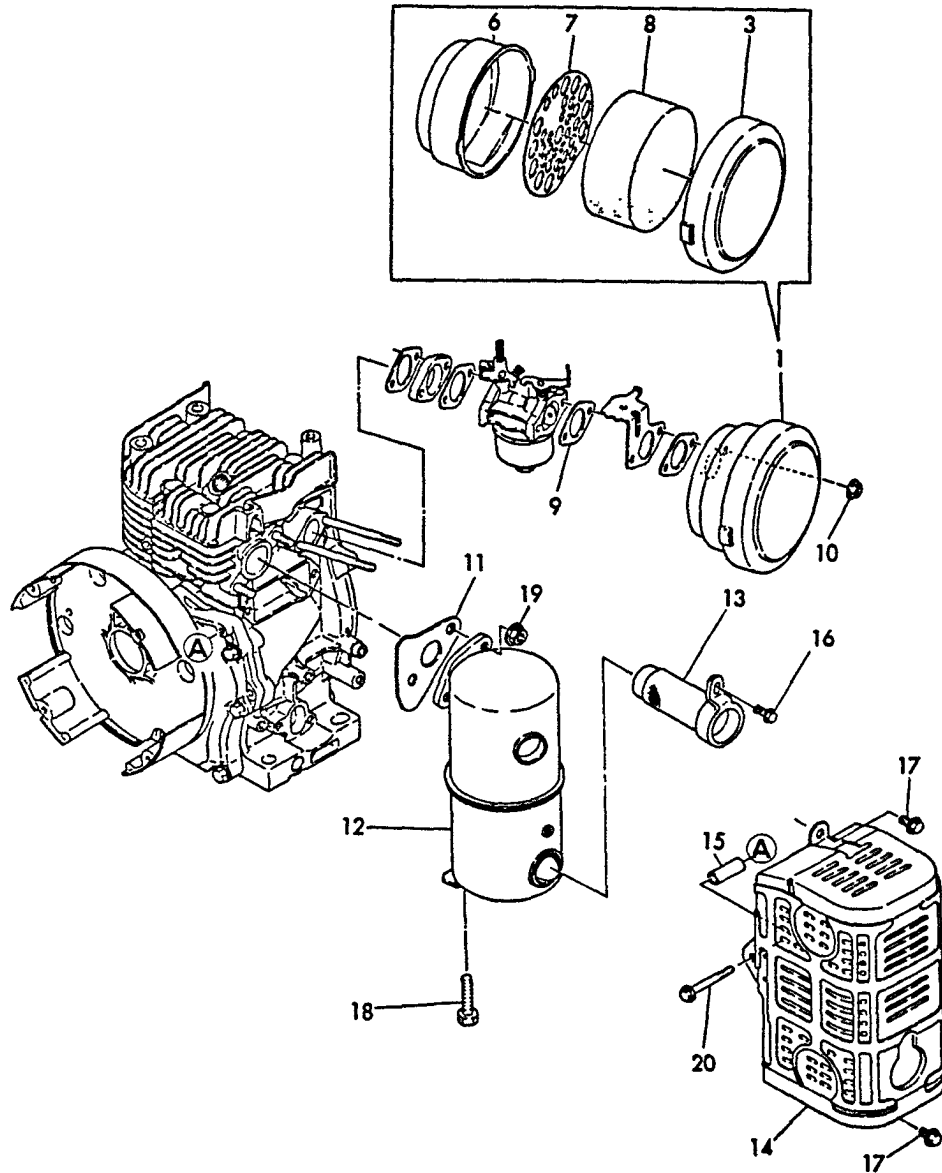
REF. NO.	LEV. 0	PART NO.	DESCRIPTION	-----Q'TY-----					
				(A)	(B)	(C)	(D)	(E)	(F)
1	.	Y 783720-08720	FRAME ASSY	1					
5	.	Y 183720-08210	DAMPER, FRONT	2					
6	.	Y 183720-08220	DAMPER, REAR	1					
7	.	Y 183621-08230	STAY, DAMPER	1					
8	.	Y 183720-08250	STAY, REAR DAMPER	1					
9	.	Y 22217-100000	SPRING WASHER 10	1					
10	.	Y 26106-080202	BOLT M8X20	2					
11	.	Y 26106-080302	BOLT M8X30	4					
12	.	Y 26106-080382	BOLT M8X38	2					
13	.	Y 26366-080002	NUT M8	10					
14	.	Y 26717-100002	NUT M10	1					

5 CYLINDER HEAD



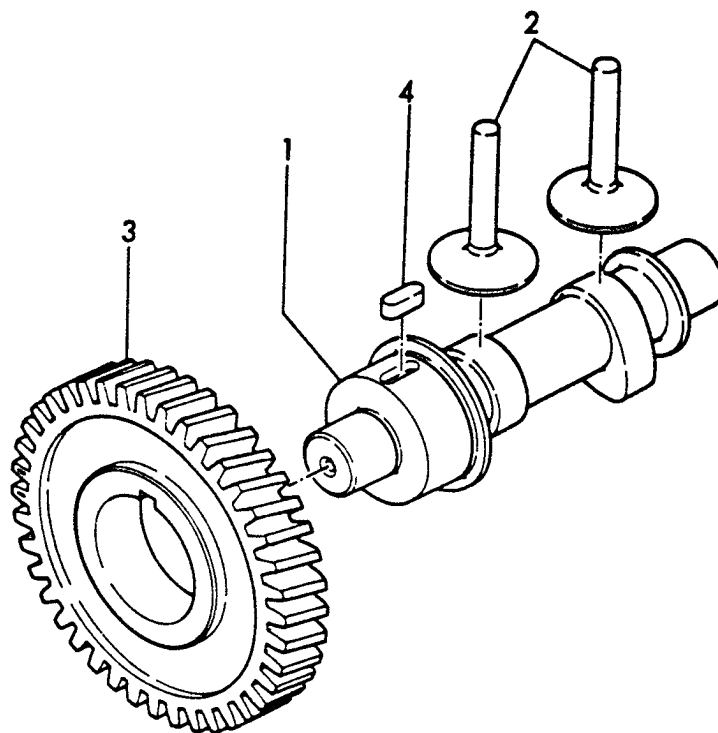
REF. NO.	LEV. 0	PART NO.	DESCRIPTION	-----Q'TY-----					
				(A)	(B)	(C)	(D)	(E)	(F)
1	.	Y 160710-11010	HEAD, CYLINDER	1					
2	.	Y 160710-11050	SPACER	1					
3	.	Y 160710-11100	VALVE, INTAKE	1					
4	.	Y 160710-11110	VALVE, EXHAUST	1					
5	.	Y 160710-11120	SPRING, VALVE	2					
6	.	Y 160610-11160	GUIDE, VALVE	2					
7	.	Y 160610-11180	RETAINER	2					
8	.	Y 26756-060002	NUT M6	1					

6 AIR CLEANER & MUFFLER



REF. NO.	LEV.	O	PART NO.	DESCRIPTION	-----Q'TY-----					
					(A)	(B)	(C)	(D)	(E)	(F)
1	.	Y	760710-12560	AIR CREANER ASSY	1					
3	..	Y	760710-12540	CAP, AIR CREANER	1					
6	..	Y	160710-12540	BODY, AIR CREANER	1					
7	..	Y	160710-12550	PLATE, ELEMENT	1					
8	..	Y	160260-12570	ELEMENT, AIR CREANER	1					
9	.	Y	160610-56150	GASKET, CARBURETOR	1					
10	.	Y	26366-060002	NUT M6	2					
11	.	Y	160710-13200	GASKET, MUFFLER	1					
12	.	Y	160770-13550	MUFFLER	1					
13	.	Y	160770-13650	SPARK ARRESTER	1					
14	.	Y	160770-13810	COVER, MUFFLER	1					
15	.	Y	160630-45190	PIECE	1					
16	.	Y	26106-060102	BOLT M6X 10	1					
17	.	Y	26106-060162	BOLT M6X 16	2					
18	.	Y	26106-080302	BOLT M8X 30	1					
19	.	Y	26366-080002	NUT M8	2					
20	.	Y	26476-060552	BOLT M6X 55	1					

7 CAMSHAFT



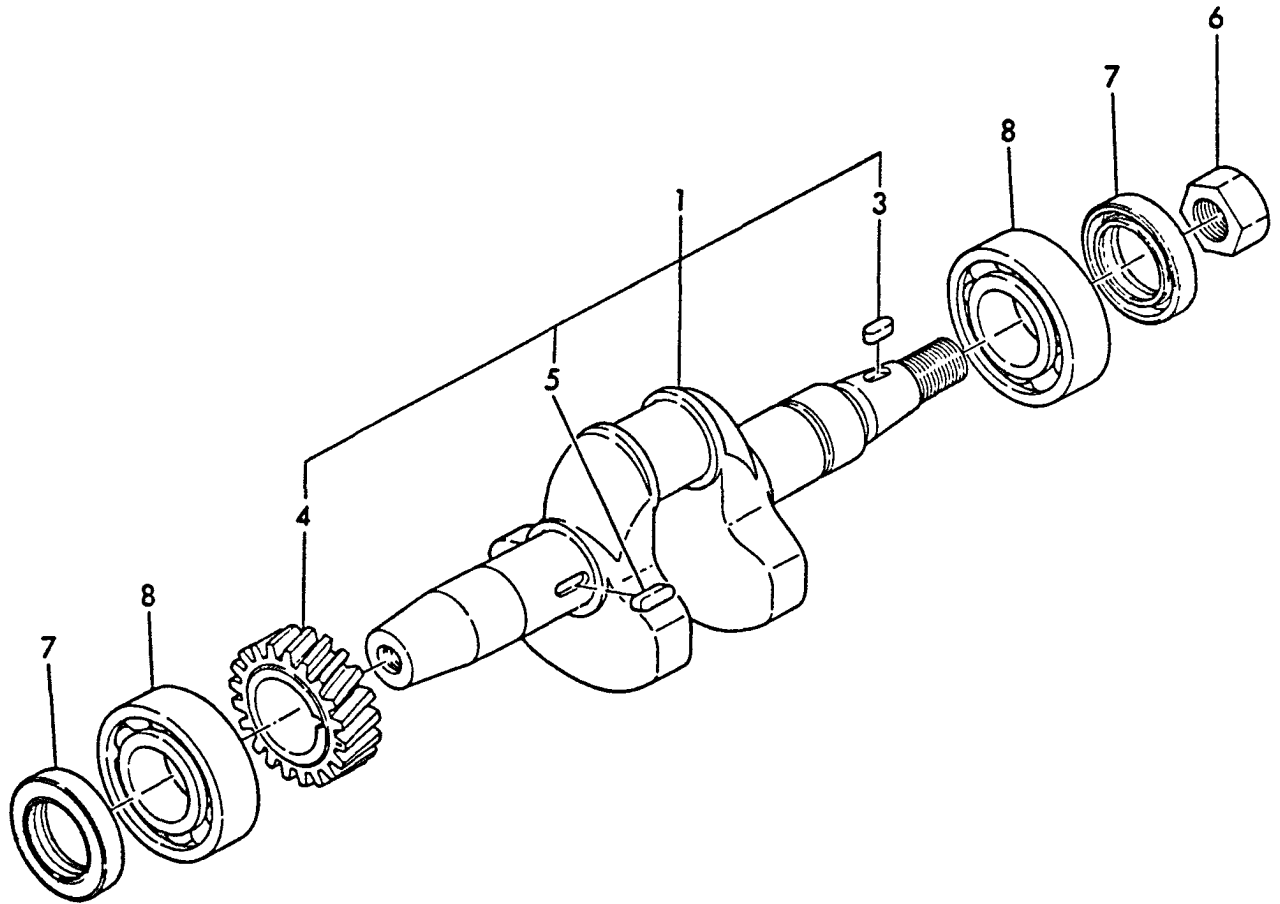
+-----+
 | 1A08 |
 | (1A01) |
 +-----+

(7) CAMSHAFT

(A)=EG2300 (D)=
 (B)= (E)=
 (C)= (F)=

REF. NO.	LEV.	O	PART NO.	DESCRIPTION	-----Q'TY-----					
					(A)	(B)	(C)	(D)	(E)	(F)
1	.	Y	160740-14011	CAMSHAFT	1					
2	.	Y	160710-14200	TAPPET	2					
3	.	Y	160710-95010	GEAR, CAMSHAFT	1					
4	.	Y	22512-040120	KEY 4X12	1					

8 CRANKSHAFT & MAIN BEARING



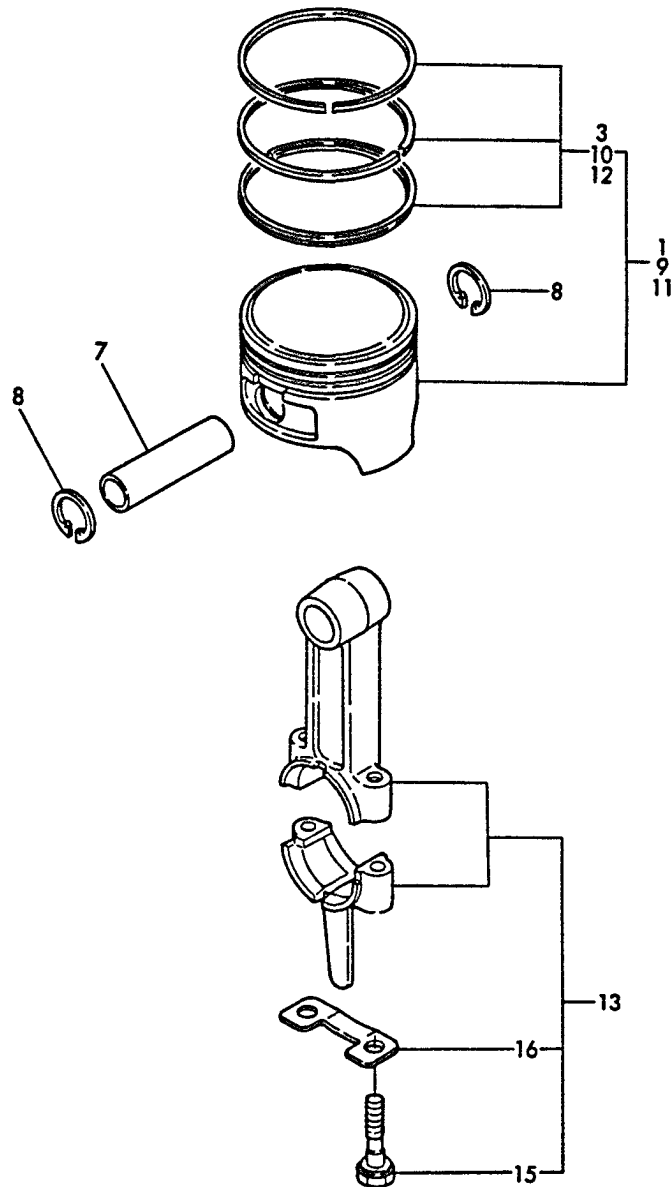
+-----+
 | 1A09 |
 | (1A01) |
 +-----+

(8) CRANKSHAFT & MAIN BEARING

(A)=EG2300 (D)=
 (B)= (E)=
 (C)= (F)=

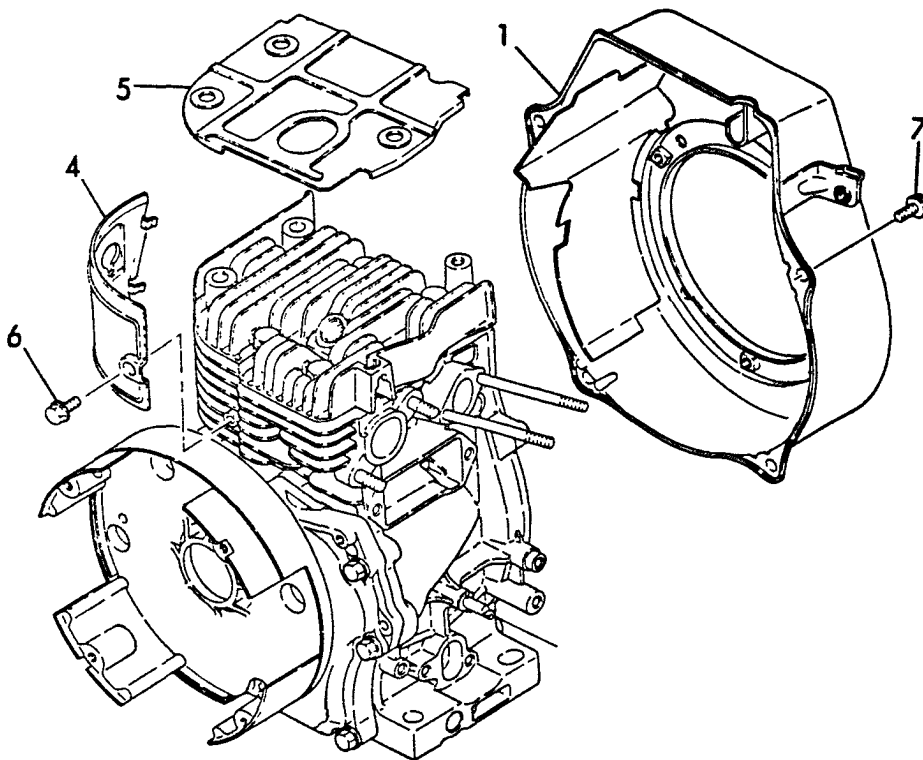
REF. NO.	LEV. 0	PART NO.	DESCRIPTION	-----Q'TY-----					
				(A)	(B)	(C)	(D)	(E)	(F)
1	.	Y 760770-21701	CRANKSHAFT ASSY	1					
3	..	Y 160610-21290	KEY 4X10	1					
4	..	Y 160710-95020	GEAR, CRANKSHAFT	1					
5	..	Y 22512-040120	KEY 4X12	1					
6	.	Y 160610-04910	NUT M14	1					
7	.	Y 160210-02220	OIL SEAL	2					
8	.	Y 24101-062050	BEARING	2					

9 PISTON & CONNECTING ROD



REF. NO.	LEV.	O	PART NO.	DESCRIPTION	-----Q'TY-----					
					(A)	(B)	(C)	(D)	(E)	(F)
1	.	Y	160710-22011	PISTON W/RING	1					
3	..	Y	760710-22500	PISTON RING ASSY	1					
7	.	Y	160710-22300	PIN, PISTON	1					
8	.	Y	22252-000160	RING 16	2					
9	.	Y	160710-22470	PISTON ASY O.S.=0.25	1					
10	..	Y	760710-22540	RING ASSY O.S.=0.25	1					
11	.	Y	160710-22480	PISTON ASY O.S.=0.5	1					
12	..	Y	760710-22550	RING ASSY O.S.=0.5	1					
13	.	Y	760710-23100	ROD ASSY, CONNECTING	1					
15	..	Y	160710-23200	BOLT, ROD	2					
16	..	Y	160710-23210	WASHER	1					

10 COOLING FAN CASE



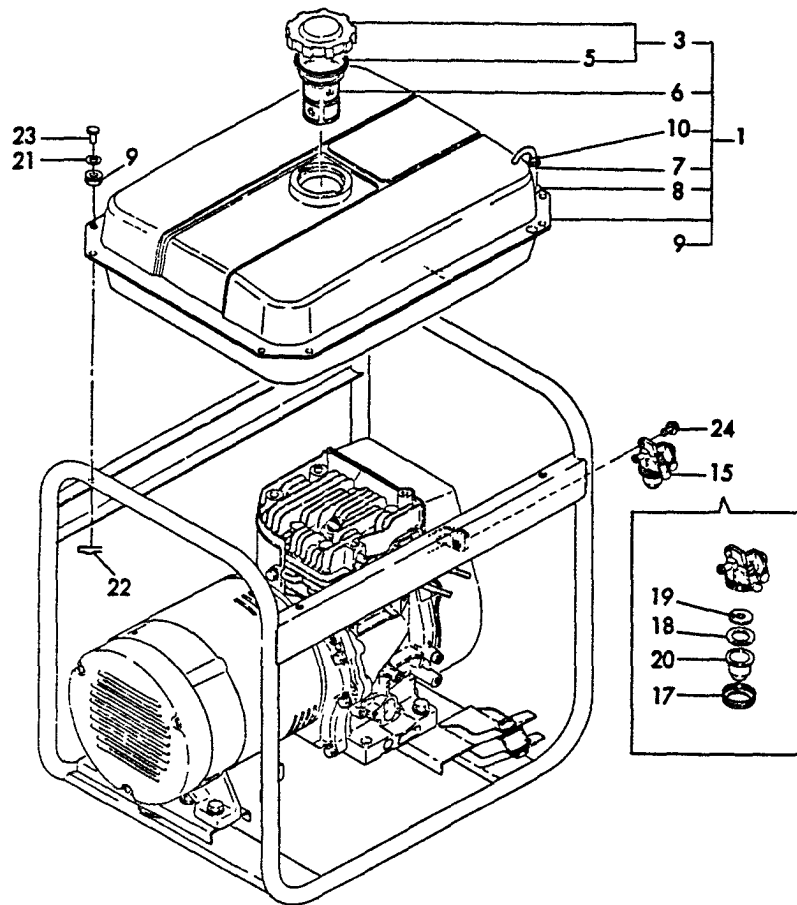
†-----†
 | 1A11 |
 | (1A01) |
 †-----†

(10) COOLING FAN CASE

(A)=EG2300 (D)=
 (B)= (E)=
 (C)= (F)=

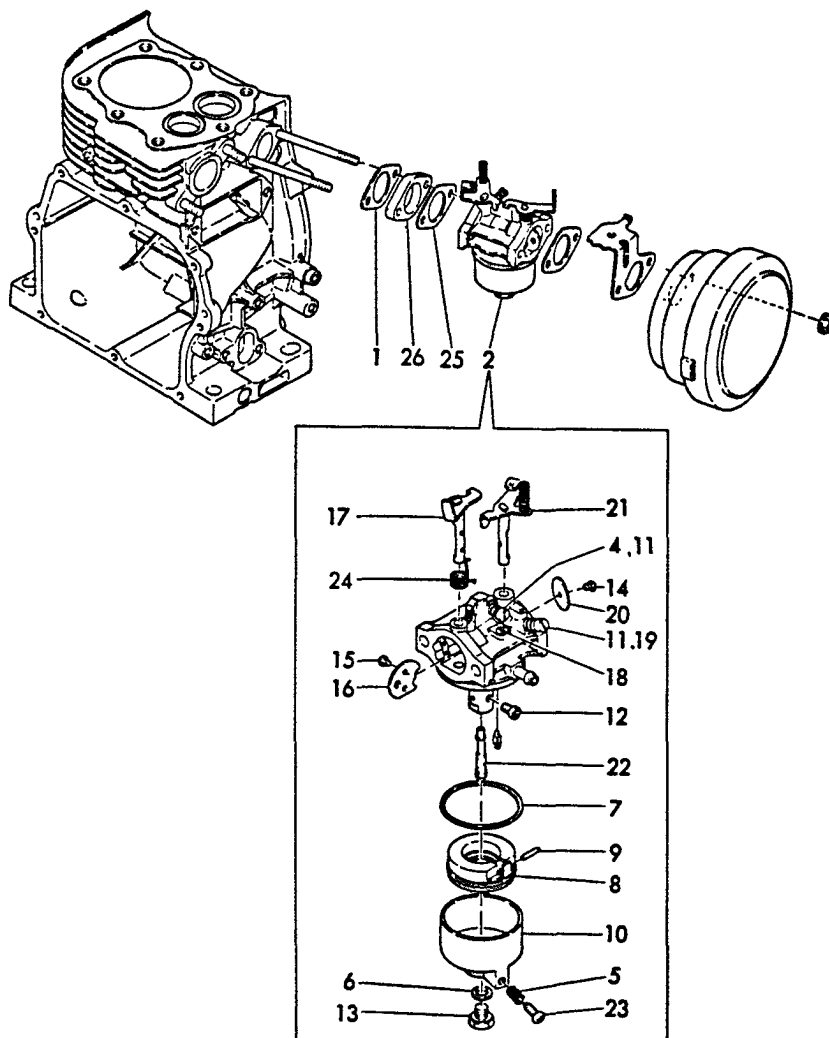
REF. NO.	LEV. 0	PART NO.	DESCRIPTION	-----Q'TY-----					
				(A)	(B)	(C)	(D)	(E)	(F)
1	.	Y 760740-45600	FAN CASE	1					
4	.	Y 160710-45201	PLATE	1					
5	.	Y 160710-45250	COVER, HEAD	1					
6	.	Y 26476-060142	BOLT M6X14	1					
7	.	Y 26476-060142	BOLT M6X14	4					

11 FUEL TANK



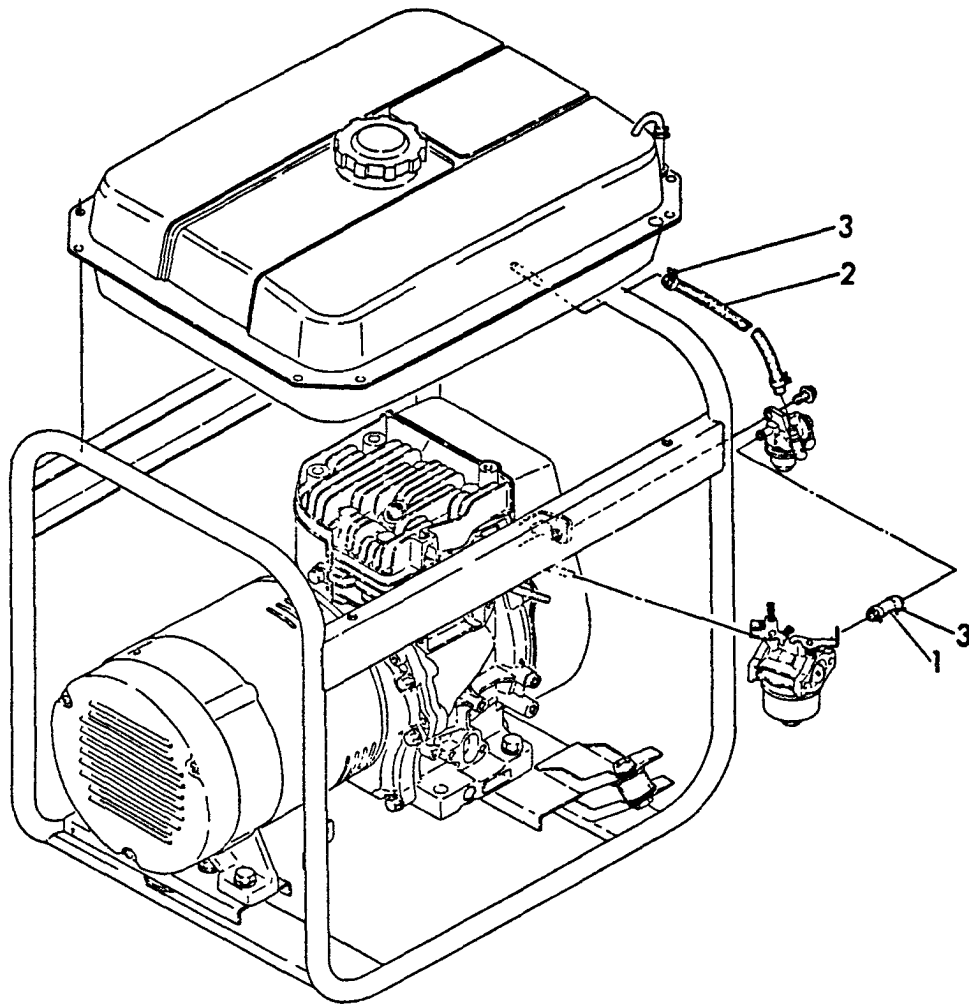
REF. NO.	LEV.	O	PART NO.	DESCRIPTION	-----Q'TY-----					
					(A)	(B)	(C)	(D)	(E)	(F)
1	.	Y	783720-55730	FUEL TANK ASSY	1					
3	..	Y	160710-55060	CAP ASSY, FUEL TANK	1					
5	...	Y	160393-55050	GASKET	1					
6	..	Y	160710-55100	STRAINER	1					
7	..	Y	160710-55150	PIPE, GAUGE	1					
8	..	Y	183720-55190	GROMMET	1					
9	..	Y	183720-55210	GROMMET, FUEL TANK	4					
10	..	Y	124722-59050	CLAMP 9	1					
15	.	Y	160710-55301	COCK ASSY, FUEL	1					
17	..	Y	160710-55360	RETAINER	1					
18	..	Y	160710-55370	GASKET	1					
19	..	Y	160710-55380	STRAINER, FUEL	1					
20	..	Y	160710-55390	BOWL, STRAINER	1					
21	.	Y	160120-76940	WASHER	4					
22	.	Y	22360-060000	PIN, SNAP 6	4					
23	.	Y	22487-060140	PIN 6X14	4					
24	.	Y	26106-060082	BOLT M6X14	1					

12 CARBURETOR



REF. NO.	LEV. 0	PART NO.	DESCRIPTION	-----Q'TY-----					
				(A)	(B)	(C)	(D)	(E)	(F)
1	.	Y 160310-13200	GASKET, SILENCER	1					
2	.	Y 160770-56010	CARBURETOR ASSY	1					
4	..	Y 181230-56370	SCREW, THROTTLE	1					
5	..	Y 181230-56380	SPRING	1					
6	..	Y 160610-56550	WASHER	1					
7	..	Y 160610-56610	GASKET	1					
8	..	Y 160610-56620	FLOAT	1					
9	..	Y 160610-56631	PIN	1					
10	..	Y 160610-56640	BODY	1					
11	..	Y 181130-56640	SPRING	2					
12	..	Y 160710-56650	JET, MAIN	1					
13	..	Y 160610-56660	BOLT	1					
14	..	Y 160120-56670	SCREW	1					
15	..	Y 160710-56710	SCREW	1					
16	..	Y 160710-56680	VALVE, CHOKE	1					
17	..	Y 160770-56690	SHAFT, CHOKE	1					
18	..	Y 160710-56740	JET, PILOT	1					
19	..	Y 160710-56751	SCREW	1					
20	..	Y 160610-56760	VALVE, THROTTLE	1					
21	..	Y 160770-56770	SHAFT, THROTTLE	1					
22	..	Y 160710-56801	NOZZLE, MAIN	1					
23	..	Y 160610-56900	SCREW	1					
24	..	Y 160710-56720	SPRING	1					
25	.	Y 160610-56150	GASKET, CARBURETOR	1					
26	.	Y 160610-56160	SPACER, CARBURETOR	1					

13 FUEL PIPE



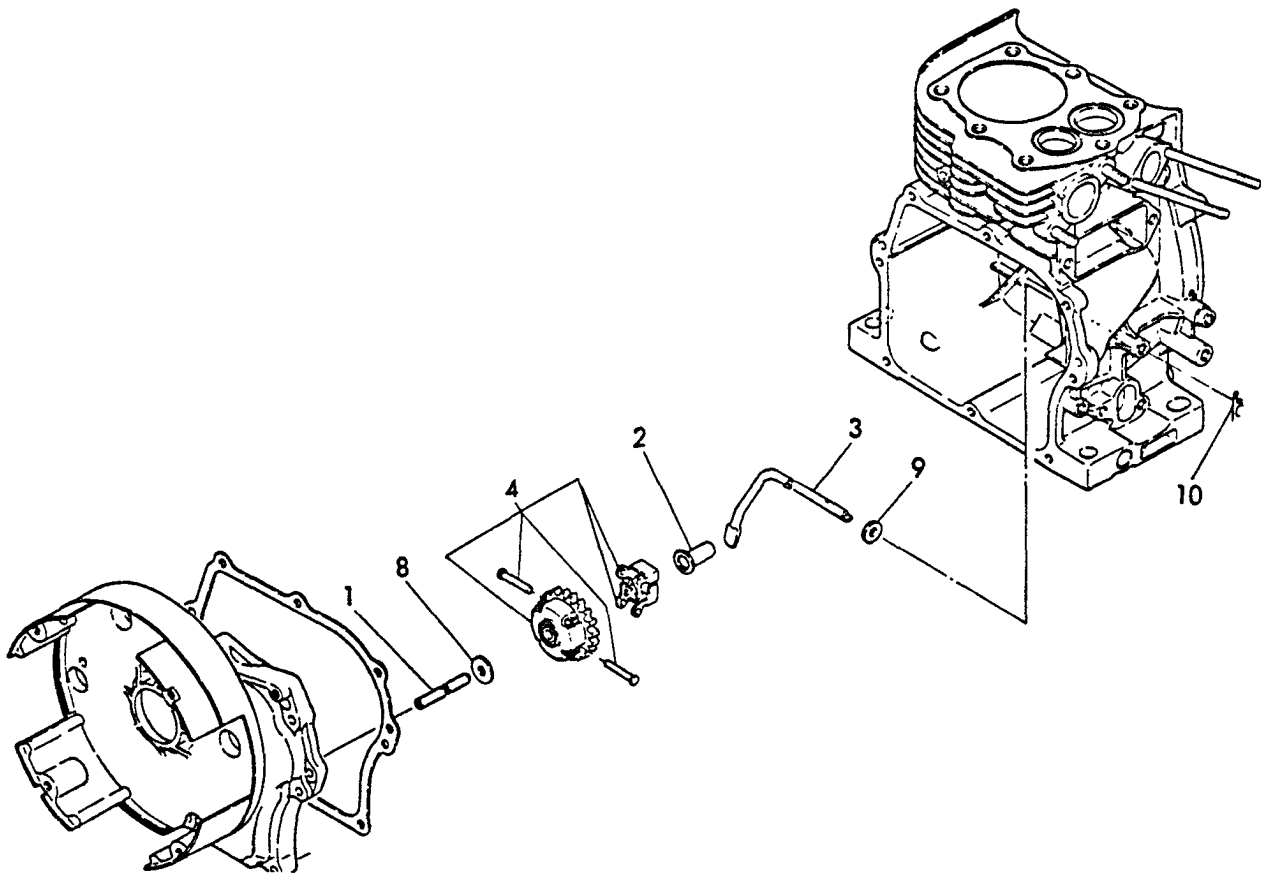
+-----+
 | 1A14 |
 | (1A01) |
 +-----+

(13) FUEL PIPE

(A)=EG2300 (D)=
 (B)= (E)=
 (C)= (F)=

REF. NO.	LEV. 0	PART NO.	DESCRIPTION	-----Q'TY-----					
				(A)	(B)	(C)	(D)	(E)	(F)
1	.	Y 160610-59160	PIPE, FUEL	1					
2	.	Y 183720-59610	PIPE, FUEL	1					
3	.	Y 124060-77680	CLAMP 10	4					

14 GOVERNOR



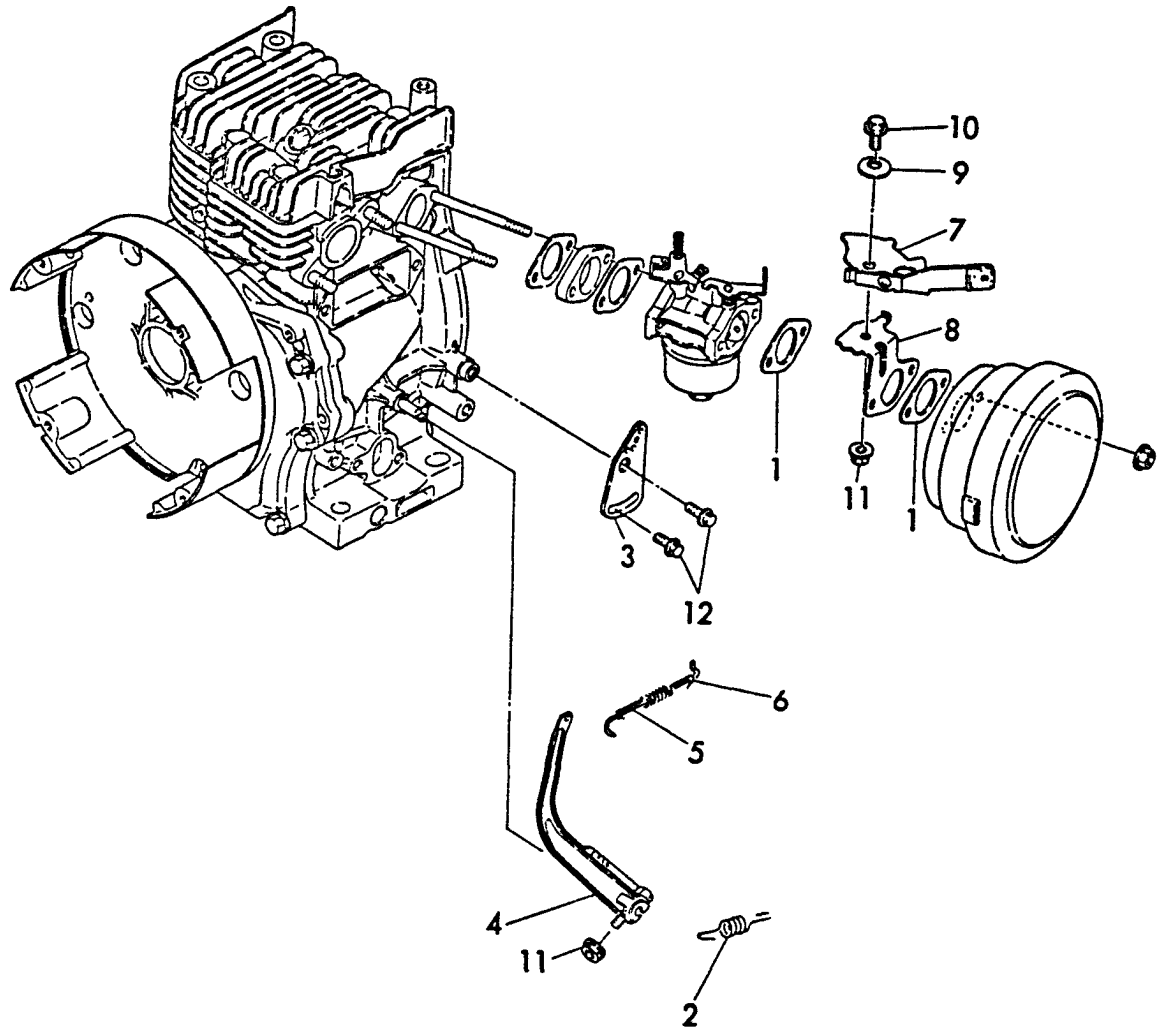
+-----+
 | 1A15 |
 | (1A01) |
 +-----+

(14) GOVERNOR

(A)=EG2300 (D)=
 (B)= (E)=
 (C)= (F)=

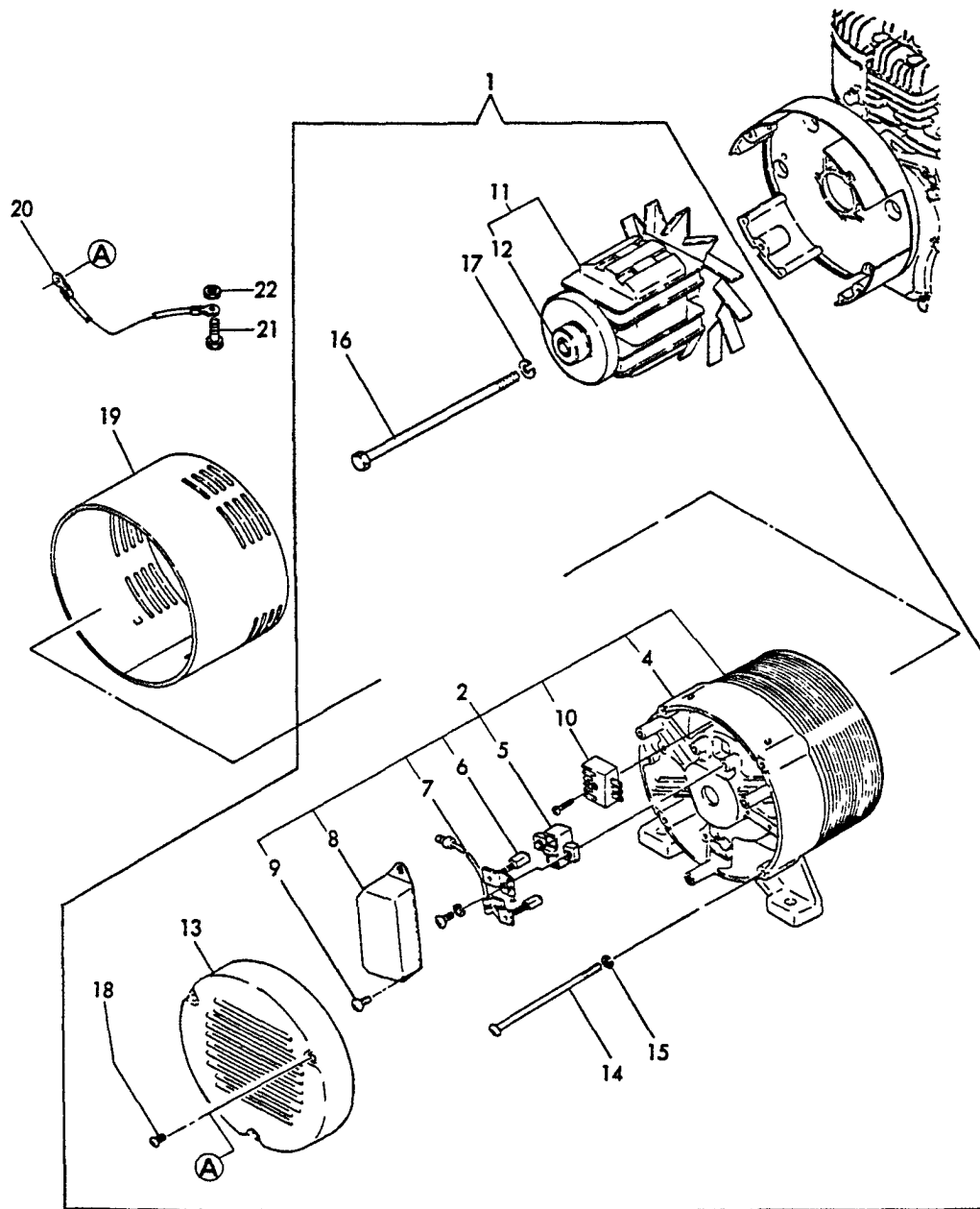
REF. NO.	LEV. 0	PART NO.	DESCRIPTION	-----Q'TY-----					
				(A)	(B)	(C)	(D)	(E)	(F)
1	.	Y 160610-61100	SHAFT, GOVERNOR	1					
2	.	Y 160610-61300	SPINDLE, GOVERNOR	1					
3	.	Y 160710-61310	YOKE, GOVERNOR	1					
4	.	Y 160610-61600	GEAR ASSY, GOVERNOR	1					
8	.	Y 160120-76940	WASHER	1					
9	.	Y 22137-060000	WASHER 6	1					
10	.	Y 22360-060000	SNAP PIN 6	1					

15 CONTROL DEVICE



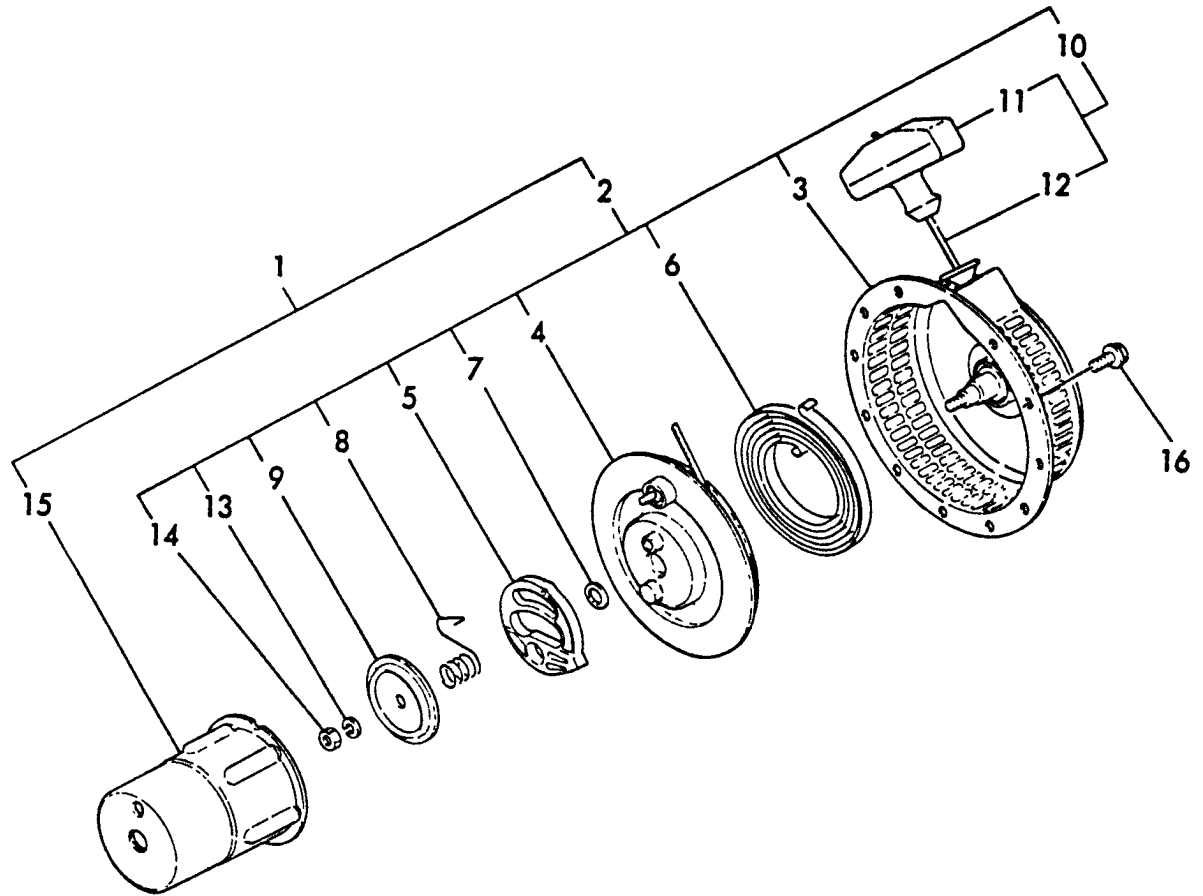
REF. NO.	LEV. O	PART NO.	DESCRIPTION	-----Q'TY-----					
				(A)	(B)	(C)	(D)	(E)	(F)
1	.	Y 160610-56150	GASKET, CARBURETOR	2					
2	.	Y 160610-66011	SPRING, REGULATOR	1					
3	.	Y 160970-66120	HANDLE, REGULATOR	1					
4	.	Y 160710-66151	LEVER, GOVERNOR	1					
5	.	Y 160610-66201	LINK, THROTTLE	1					
6	.	Y 160710-66220	SPRING, TENSION	1					
7	.	Y 160770-66300	LEVER ASSY	1					
8	.	Y 160770-66330	BRACKET	1					
9	.	Y 160670-66350	COLLER	1					
10	.	Y 26106-060122	BOLT M6X12	2					
11	.	Y 26366-060002	NUT M6	2					
12	.	Y 26476-060142	BOLT M6X14	2					

16 GENERATOR



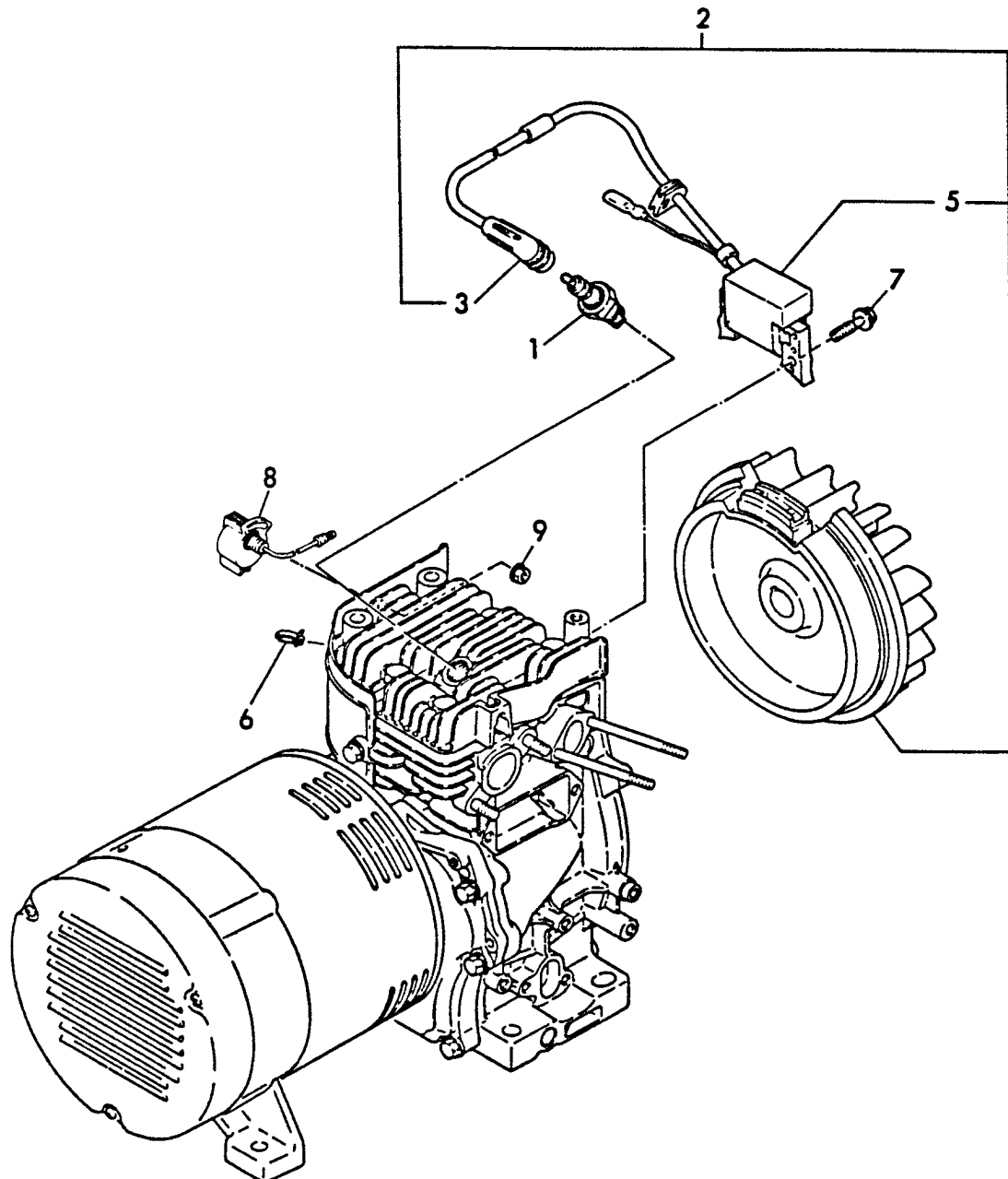
REF. NO.	LEV. O	PART NO.	DESCRIPTION	-----Q'TY-----					
				(A)	(B)	(C)	(D)	(E)	(F)
1	.	Y 183720-74130	GENERATOR 2.0KVA	1					
2	..	Y 183720-74230	STATOR ASSY.	1					
4	...	Y 183720-74260	COVER, REAR	1					
5	...	Y 183620-74240	HOLDER, BRUSH	1					
6	...	Y 183620-74220	BRUSH (+)	1					
7	...	Y 183620-74230	BRUSH (-)	1					
8	...	Y 183621-74170	A.V.R.	1					
9	...	Y 183820-74300	SCREW M5X14	2					
10	...	Y 183720-74460	RECTIFIER	1					
11	..	Y 183720-74350	ROTOR ASSY.	1					
12	...	Y 183620-74360	BEARING	1					
13	..	Y 183621-74400	COVERR	1					
14	..	Y 183720-74410	BOLT	4					
15	..	Y 22217-060000	SPRING WASHER	4					
16	..	Y 183720-74430	BOLT	1					
17	..	Y 22217-080000	SPRING WASHER	1					
18	..	Y 183520-91290	SCREW M4X8	3					
19	.	Y 183720-74760	BAND	1					
20	.	Y 183621-74450	WIRE, EARTH	1					
21	.	Y 26113-060162	BOLT M6X16	1					
22	.	Y 26753-060002	NUT M6	1					

17 STARTING DEVICE



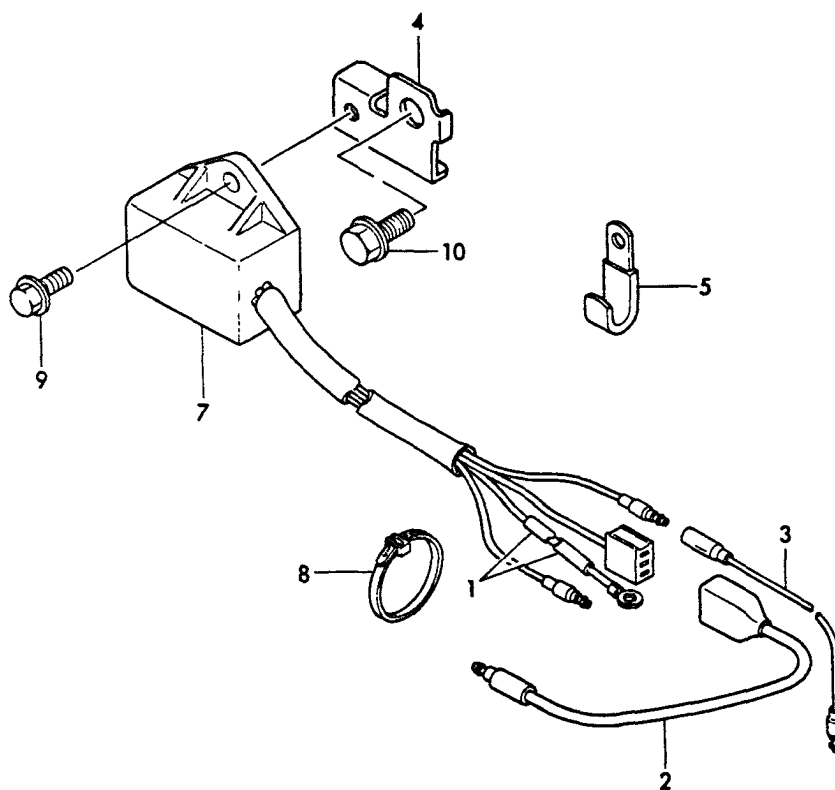
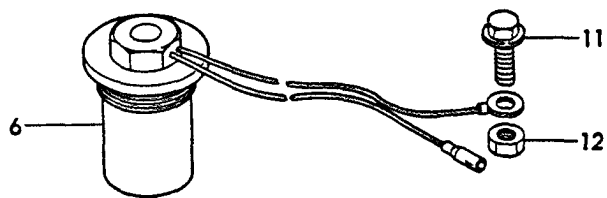
REF. NO.	LEV. 0	PART NO.	DESCRIPTION	-----Q'TY-----					
				(A)	(B)	(C)	(D)	(E)	(F)
1	.	Y 160740-76050	STARTER ASSY, RECOIL	1					
2	..	Y 160740-76250	RECOIL ASSY	1					
3	...	Y 160740-76510	CASE, STARTER	1					
4	...	Y 160710-76520	REEL	1					
5	...	Y 160610-76530	RATCHET	1					
6	...	Y 160710-76540	SPRING, SPIRAL	1					
7	...	Y 160610-76550	WASHER, THRUST	1					
8	...	Y 160740-76560	SPRING, FRICTION	1					
9	...	Y 160610-76580	PLATE, FRICTION	1					
10	...	Y 160260-76610	ROPE ASSY, STARTER	1					
11	Y 160260-76620	KNOB, STARTER	1					
12	Y 160260-76630	ROPE, STARTER	1					
13	...	Y 22217-060000	SPRING WASHER 6	1					
14	...	Y 26717-060002	NUT M6	1					
15	..	Y 160710-76590	PULLEY, STARTER	1					
16	.	Y 26106-060082	BOLT M6X8	3					

18 FLYWHEEL MAGNETO & STOP SWITCH



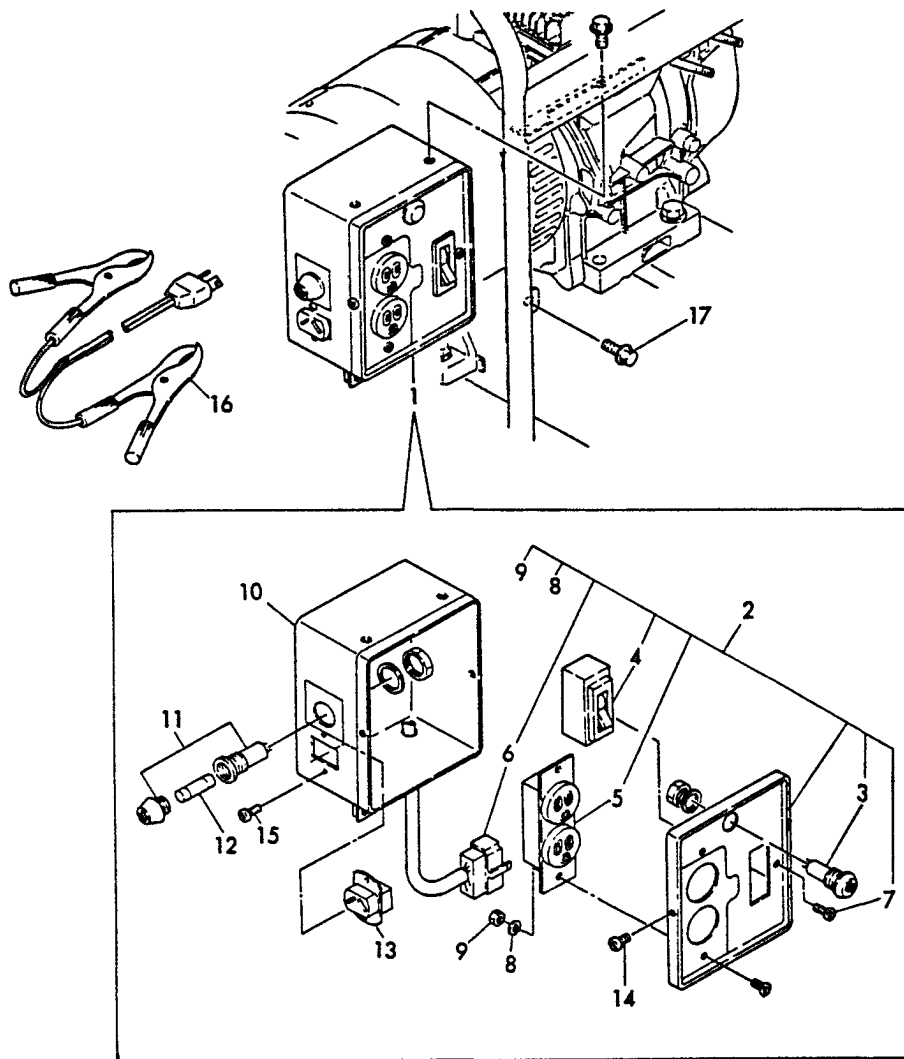
REF. NO.	LEV. 0	PART NO.	DESCRIPTION	-----Q'TY-----					
				(A)	(B)	(C)	(D)	(E)	(F)
1	.	Y 160232-78010	PLUG, SPARK	1					
2	.	Y 160740-78061	FLYWHEEL MAG. ASSY.	1					
3	..	Y 160343-78040	CAP, PLUG	1					
5	..	Y 160710-78511	COIL, IGNITION	1					
6	.	Y 160710-78700	CLAMP	1					
7	.	Y 26476-060252	BOLT M6X30	2					
8	.	Y 160611-77250	SWITCH	1					
9	.	Y 26366-080002	NUT M8	1					

19 OIL SENSOR



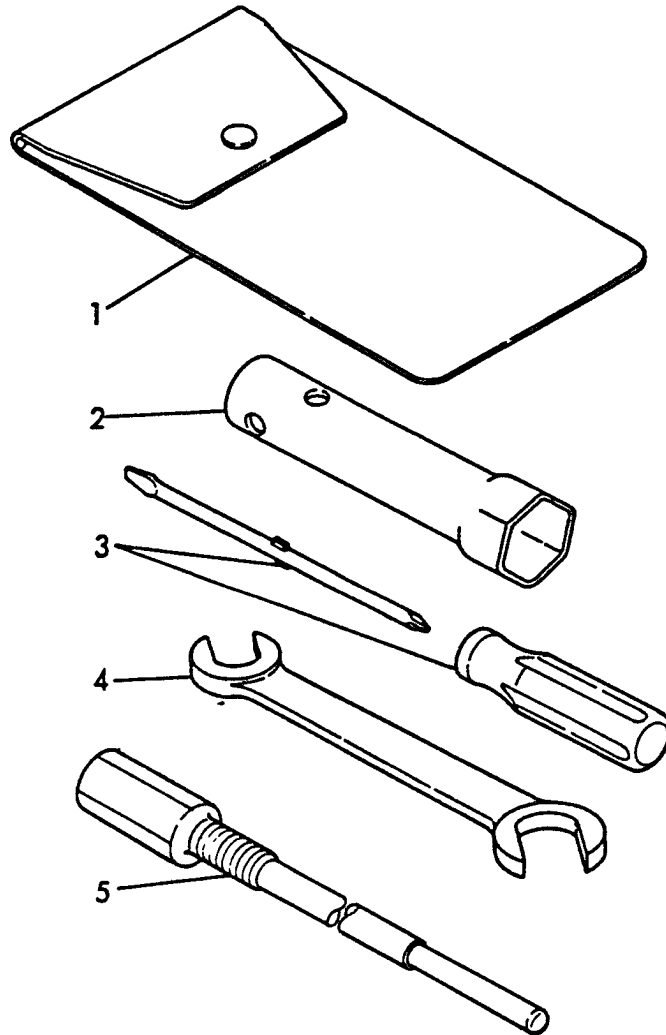
REF. NO.	LEV. 0	PART NO.	DESCRIPTION	-----Q'TY-----					
				(A)	(B)	(C)	(D)	(E)	(F)
1	.	Y 160810-03400	TUBE, PROTECTIVE	1					
2	.	Y 160671-78200	WIRE	1					
3	.	Y 160671-78230	WIRE, SENSOR UNIT	1					
4	.	Y 160671-78350	STAY, SENSOR UNIT	1					
5	.	Y 160260-78700	CLAMP	1					
6	.	Y 160770-78810	SENSOR, OIL LEVEL	1					
7	.	Y 160671-78810	UNIT, OIL SENSOR	1					
8	.	Y 160370-78950	CLAMP	2					
9	.	Y 26106-060122	BOLT M 6X 12	1					
10	.	Y 26106-080142	BOLT M 8X 14	1					
11	.	Y 26113-060162	BOLT M 6X 16	1					
12	.	Y 26753-060002	NUT M 6	1					

20 PANEL



REF. NO.	LEV. O	PART NO.	DESCRIPTION	-----Q'TY-----					
				(A)	(B)	(C)	(D)	(E)	(F)
1	.	Y 183720-91080	PANEL BOX ASSY	1					
2	..	Y 183720-91210	PANEL ASSY	1					
3	...	Y 183820-91320	LAMP, PILOT	1					
4	...	Y 183720-91230	BREAKER 17A	1					
5	...	Y 183920-91320	PLUG SOCKET 110V	1					
6	...	Y 183720-91370	WIRE HARNESS	1					
7	...	Y 26022-040082	SCREW M4X8	3					
8	...	Y 22117-040000	WASHER 4	2					
9	...	Y 21727-040002	NUT M4	2					
10	..	Y 183720-91360	BOX ASSY	1					
11	..	Y 183620-91230	HOLDER, FUSE	1					
12	..	Y 183720-91240	FUSE 15A	1					
13	..	Y 183720-91250	PLUG SOCKET 15A	1					
14	..	Y 26022-040082	SCREW M4X8	2					
15	..	Y 26022-030102	SCREW M3X10	2					
16	.	Y 183210-91880	CABLE	1					
17	.	Y 26106-060082	BOLT M6X8	3					

21 TOOLS



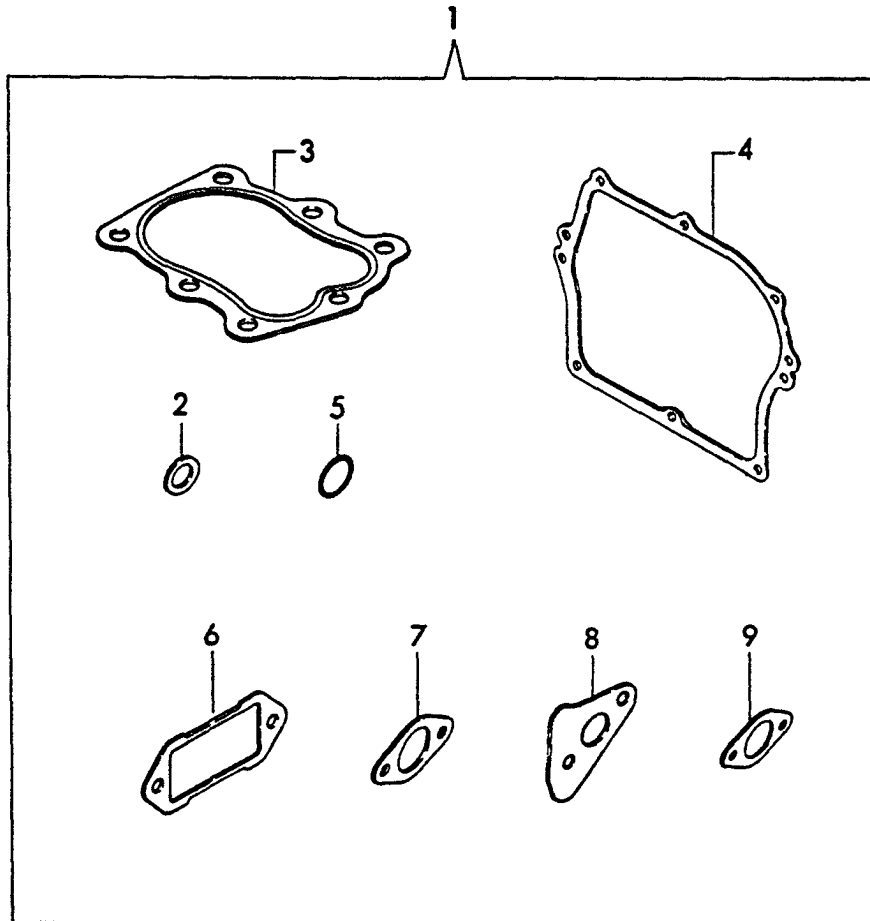
+-----+
 | 1B06 |
 | (1A01) |
 +-----+

(21) TOOLS

(A)=EG2300 (D)=
 (B)= (E)=
 (C)= (F)=

REF. NO.	LEV. 0	PART NO.	DESCRIPTION	-----Q'TY-----					
				(A)	(B)	(C)	(D)	(E)	(F)
1	.	Y 160110-92610	BAG, TOOL	1					
2	.	Y 160120-92700	BOX WRENCH 21	1					
3	.	Y 160330-92730	DRIVER (+)	1					
4	.	Y 28110-100120	WRENCH 10X12	1					
5	.	Y 183720-92350	REMOVAL TOOL, ROTOR	1					

22 GASKET SET (OPTIONAL)



+-----+
 | 1B07 |
 | (1A01) |
 +-----+

(22) GASKET SET(OPTIONAL)

(A)=EG2300 (D)=
 (B)= (E)=
 (C)= (F)=

REF. NO.	LEV. 0	PART NO.	DESCRIPTION	-----Q'TY-----					
				(A)	(B)	(C)	(D)	(E)	(F)
1	.	Y 760770-92600	GASKET SET	1					
2	..	Y 104200-59170	GASKET 12	1					
3	..	Y 160710-01330	GASKET, CYL. HEAD	1					
4	..	Y 160710-01410	GASKET, SIDE COVER	1					
5	..	Y 24311-000180	O-RING P18	1					
6	..	Y 160710-03070	GASKET, BREATHER	1					
7	..	Y 160610-56150	GASKET, CARBURETOR	4					
8	..	Y 160710-13200	GASKET, MUFFLER	1					
9	..	Y 160310-13200	GASKET, SILENCER	1					