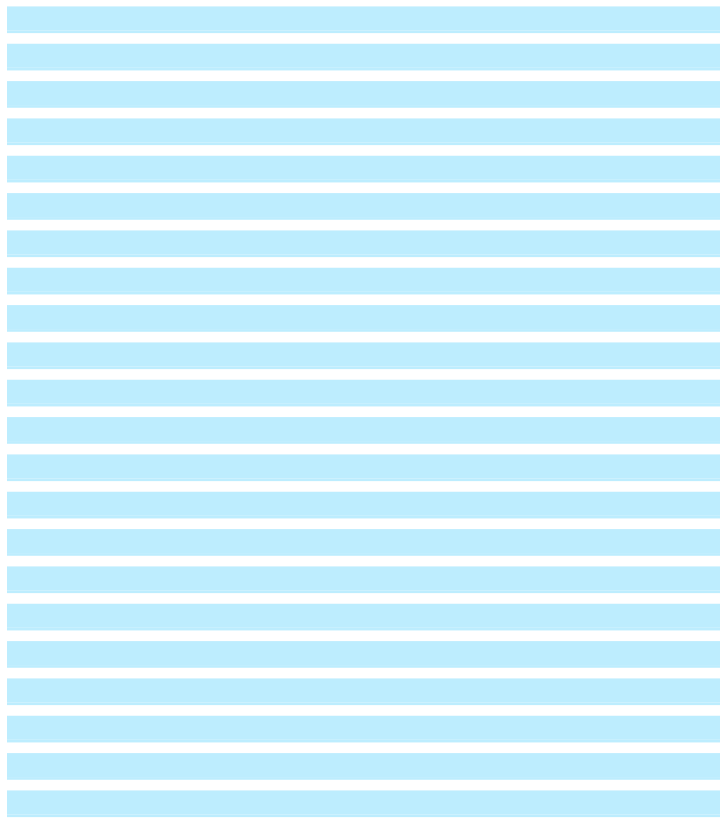




Accessories for ECHO products can be found at:  
 Los accesorios para los productos ECHO se pueden encontrar en:  
[www.echo-usa.com/products/catalogs](http://www.echo-usa.com/products/catalogs)

**OPTIONAL ACCESSORIES & ATTACHMENTS:**

LEAF TAMPER	99944300009
ALL WEATHER COVER	99944300008
BLOWER, 2-BLADE RADIAL FAN	99944300012
KIT, 3" DEBRIS BAG	99944300011
KIT, WIDE SHREDDER	99944300014
KIT, TWO WHEEL TOW	99944300010
SCREEN, FINE (3/8" DIA)	99944300000
SCREEN, MEDIUM (3/4" DIA)	99944300001
SCREEN, COARSE (1-3/8" DIA)	99944300002
KIT, CHIPPER BLADE	99944300013
SCREEN, WET DEBRIS	99944300003
KIT, SPARK ARRESTER (Briggs 306/420cc)	YH460000210



**PARTS CATALOG**  
**LISTA DE PIEZAS**

**SC-4213**  
**Chipper / Shredder**



**420 cc**

**SERIAL NUMBER**  
 NÚMERO DE SERIE

**220SCB000001 - 220SCB999999**

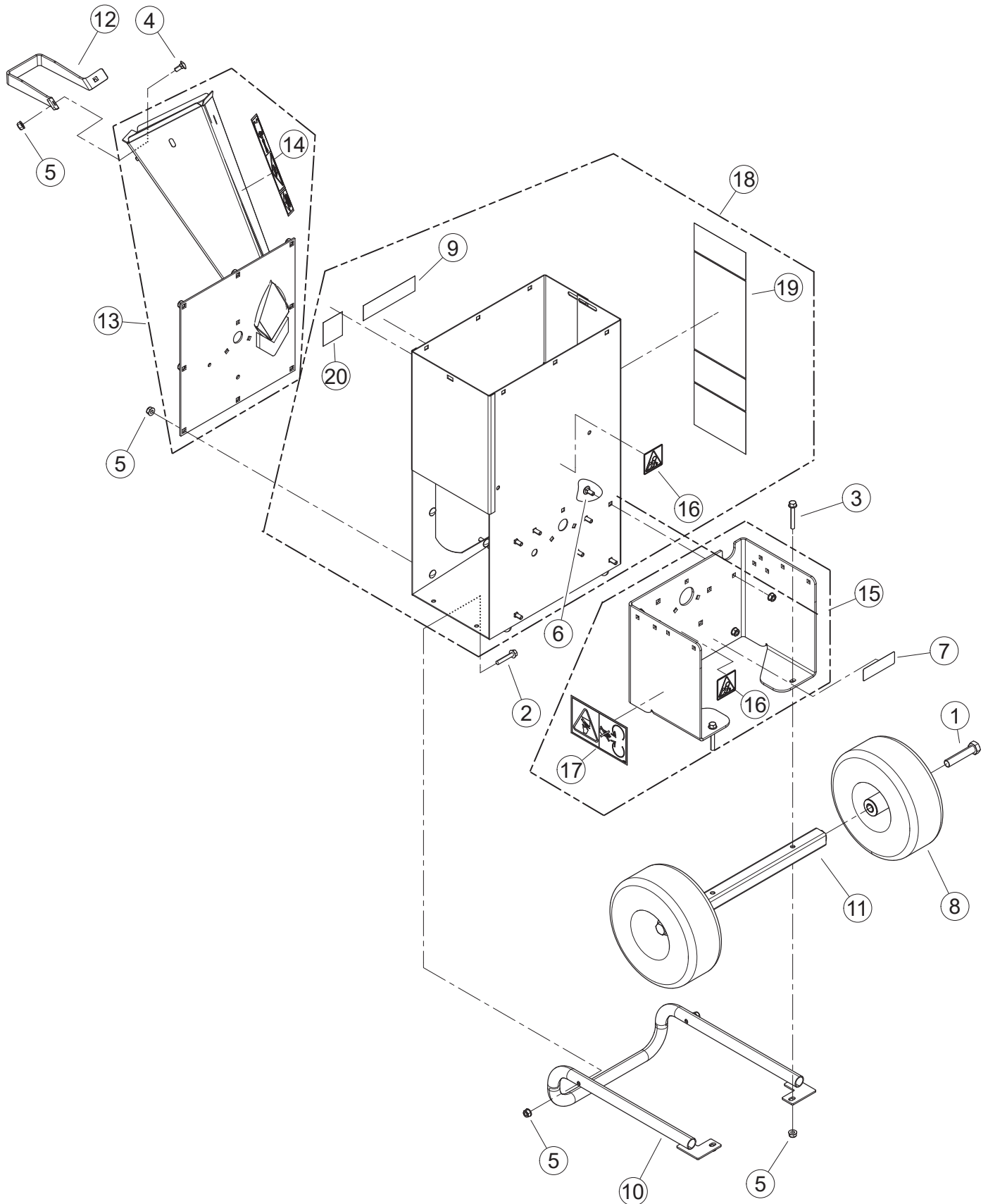
**ECHO Incorporated**

400 Oakwood Road, Lake Zurich, Illinois 60047

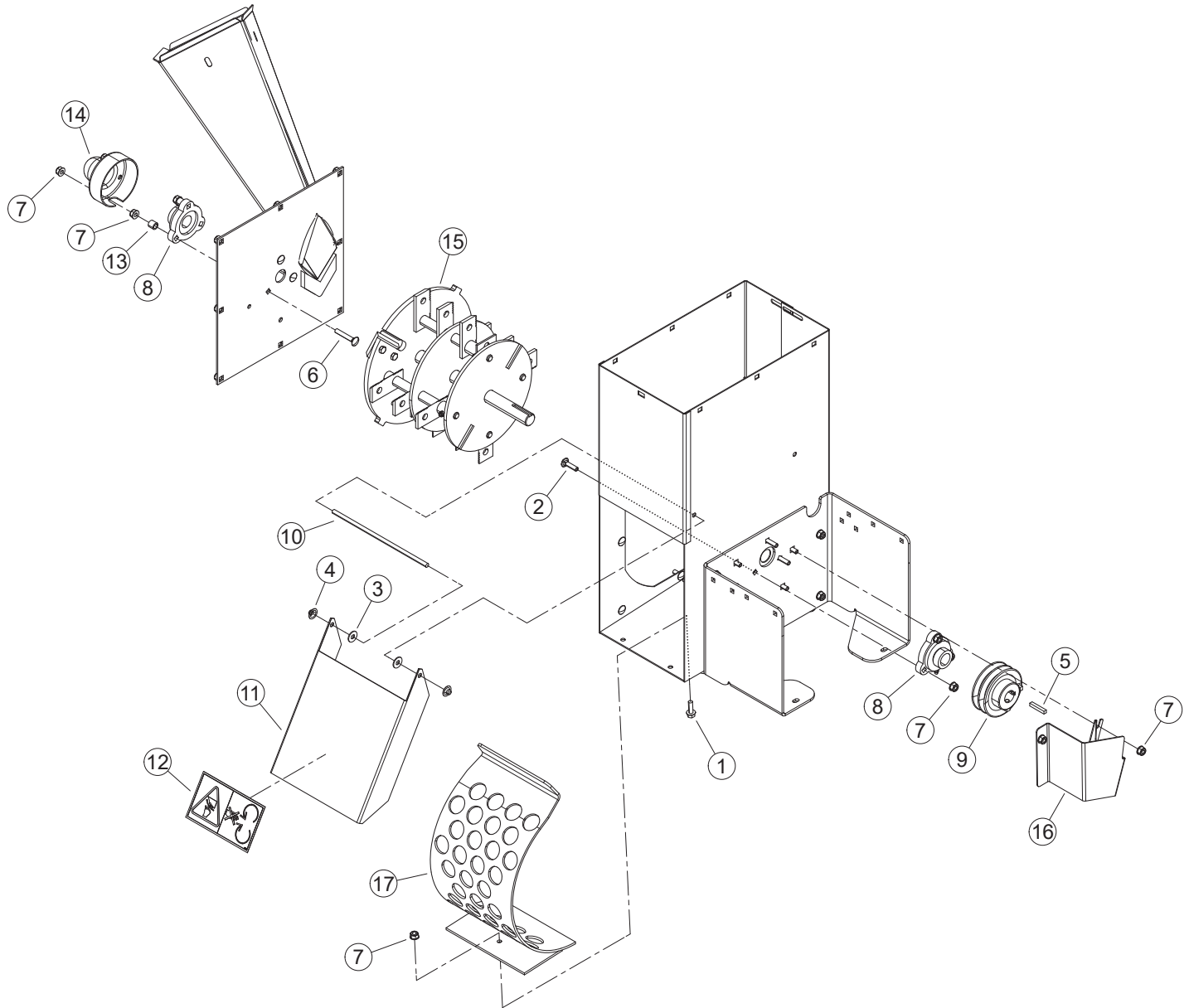
[WWW.ECHO-USA.COM](http://WWW.ECHO-USA.COM)

P/N 99922205575

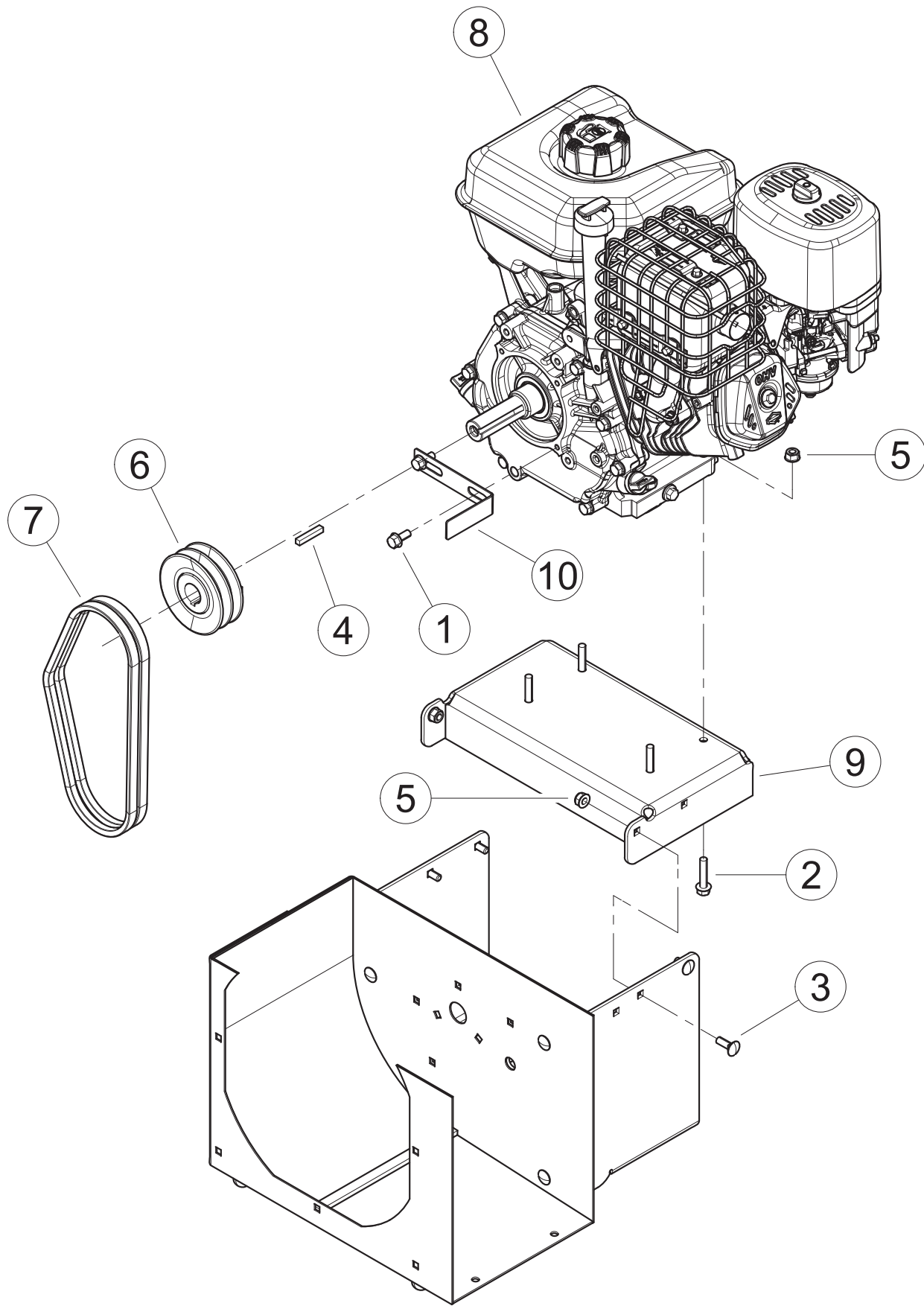
Body .....	2
Body .....	3
Rotor & Bearings .....	4
Rotor & Bearings .....	5
Engine .....	6
Engine .....	7
Idler .....	8
Idler .....	9
Hopper .....	10
Hopper .....	11
LEAF TAMPER .....	12
99944300009	
<b>ALL WEATHER COVER .....</b>	<b>13</b>
99944300008	
<b>BLOWER, ONE SPEED BLOWER .....</b>	<b>14</b>
99944300012	
<b>KIT, 3" DEBRIS BAG .....</b>	<b>15</b>
99944300011	
<b>KIT, WIDE SHREDDER .....</b>	<b>16</b>
99944300014	
<b>KIT, TWO WHEEL TOW .....</b>	<b>17</b>
99944300010	
<b>SCREEN, FINE (3/8" DIA) .....</b>	<b>18</b>
99944300000	
<b>SCREEN, MEDIUM (3/4" DIA) .....</b>	<b>19</b>
99944300001	
<b>SCREEN, COARSE (1-3/8" DIA) .....</b>	<b>20</b>
99944300002	
<b>KIT, CHIPPER BLADE .....</b>	<b>21</b>
99944300013	
<b>SCREEN, WET DEBRIS .....</b>	<b>22</b>
99944300003	
<b>KIT, SPARK ARRESTER .....</b>	<b>23</b>
BRIGGS 306/420CC / YH460000210	



NO.	PART NUMBER	QTY.	DESCRIPTION
1	YH434000010	2	BOLT, 5/8 × 3 HEX HD GR5 ZP
2	YH436000070	2	BOLT, 5/16 × 1-3/4 FLANGE NC
3	YH436000080	2	BOLT, 5/16 × 2-1/4 FLANGE NC
4	YH434000050	2	BOLT, 5/16 × 3/4 GR5 CRG NC ZP
5	YH449000040	18	NUT, 5/16-18 NYLOCK FLANGE
6	YH434000030	3	BOLT, 5/16-18 × 1 GR5 CRG
7		1	DECAL, SERIAL NUMBER
8	YH478000060	2	ASSEMBLY, 410/350-4 FLAT-FREE WHEEL
9	YH653000490	1	+DECAL, MODEL SC-4213
10	YH479001440	1	WELDMENT, SUPPORT LEG LONG
11	YH479001570	1	WELDMENT, AXLE 3 IN CHIPPER
12	YH466000410	1	HANDLE, CHIPPER CHUTE 3 IN
13	YH479001610	1	ASSEMBLY, 3 IN FRONT PLATE
14	YH653000210	1	+DECAL, 3" CHIPPER CHUTE
15	YH479001630	1	ASSEMBLY, BASE 3 IN CHIPPER SERVICE
16	YH653000170	2	+DECAL, SHIELD DANGER ISO
17	YH653000180	1	+DECAL, BLADE DANGER ISO
18	YH479001640	1	ASSEMBLY, 3" C/S WIDE BODY SERVICE
19	YH653000220	1	+DECAL, 3" CHIPPER BODY SIDE
20	YH653000290	1	+DECAL, SPARK ARRESTOR

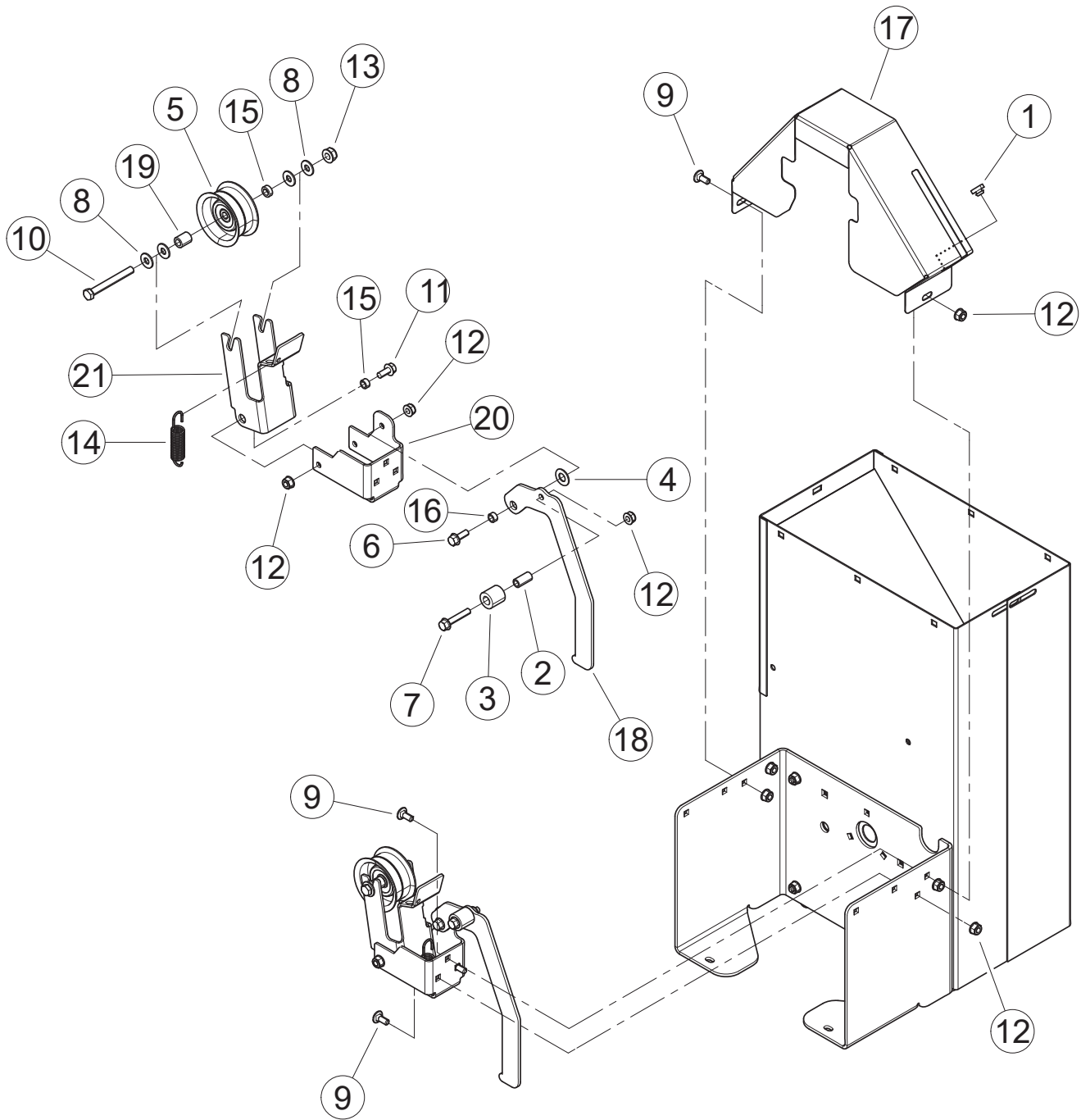


NO.	PART NUMBER	QTY.	DESCRIPTION
1	YH436000050	4	BOLT, 5/16 x 1 FLANGE NC
2	YH434000060	3	BOLT, 5/16 x 1-1/4 GR5 CRG
3	YH451000470	2	WASHER, 5/16" ID 7/8" OD NYLON FLAT
4	YH452000660	2	PUSHNUT, 5/16" ZP
5	YH469000050	1	KEY, 1/4 SQ x 1-1/2 LG PLAIN
6	YH434000080	3	BOLT, 5/16 x 2" GR5 CRG NC ZP
7	YH449000040	13	NUT, 5/16-18 NYLOCK FLANGE
8	YH453000120	2	BEARING, 1" FLUSH MOUNT CAST W/ COLLAR
9	YH472000040	1	PULLEY, CAST 4" OD 1" BORE B GRV
10	YH466000440	1	SHAFT, DOOR PIVOT
11	YH479000810	1	DOOR, DISCHARGE 8 HP W/ DECAL
12	YH653000180	1	+DECAL, BLADE DANGER ISO
13	YH475000090	3	SPACER, .54 OD x .50" LG
14	YH468000110	1	CAP, ROTOR SHAFT END CAP RENTAL
15	YH457000080	1	ASSEMBLY, WIDE ROTOR W/ RECT KNIVES
16	YH479001030	1	SHIELD, LOWER
17	99944300002	1	WELDMENT, WIDE COARSE TAPERED

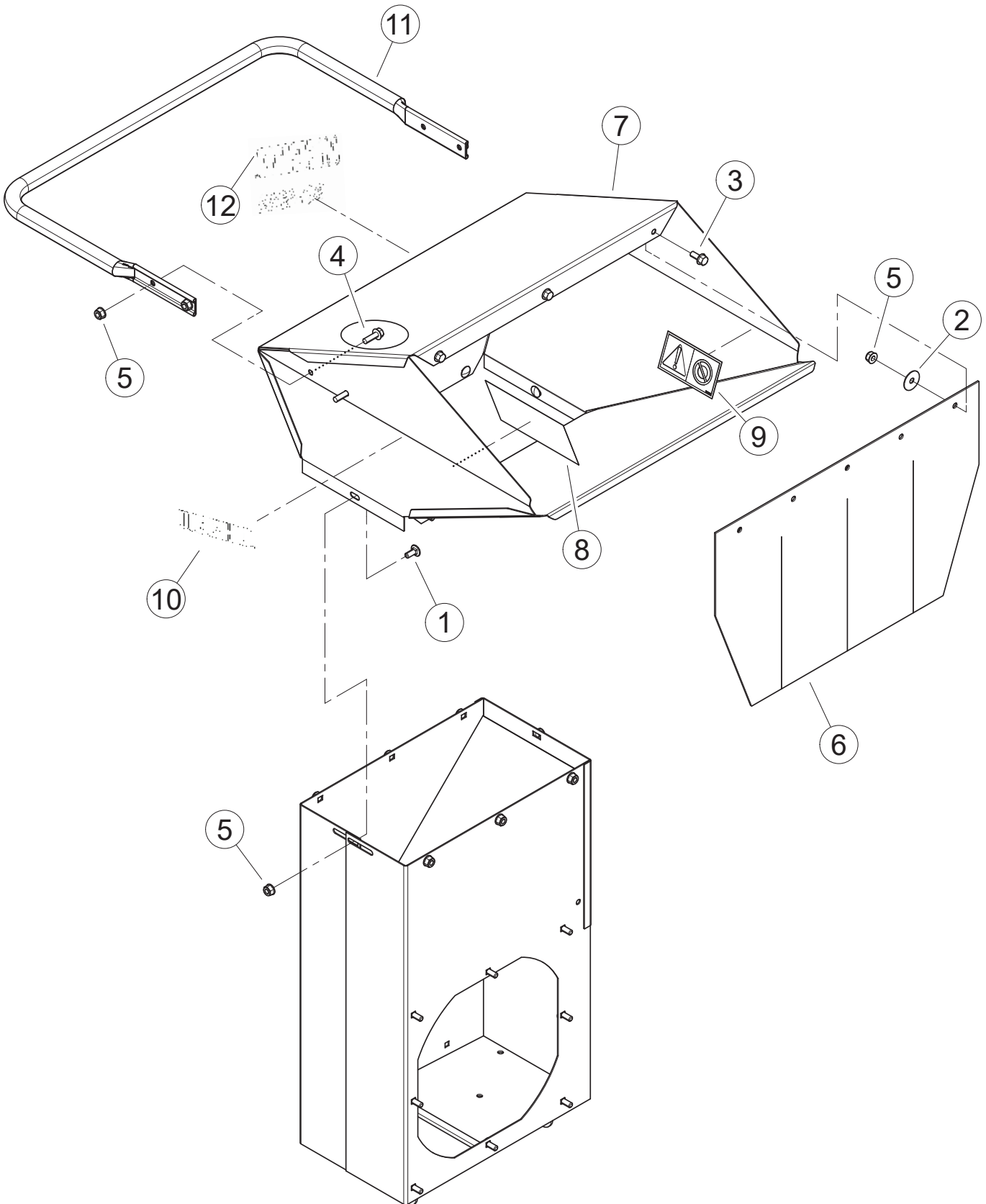


NO.	PART NUMBER	QTY.	DESCRIPTION
1	YH436000020	2	BOLT, 5/16 × 3/4 SERRATED FLANGE NF
2	YH436000060	4	BOLT, 5/16 × 1-1/2 FLANGE NC
3	YH434000030	4	BOLT, 5/16-18 × 1 GR5 CRG
4	YH469000050	1	KEY, 1/4 SQ × 1-1/2 LG PLAIN
5	YH449000040	8	NUT, 5/16-18 NYLOCK FLANGE
6	YH472000060	1	PULLEY, 4 X1 2A GROOVE
7	YH454000010	1	BELTS, HAH29.1 EL MATCHED SET
8		1	ENGINE, 420cc B&S HORIZONTAL
9	YH479000890	1	PLATE, ENGINE MOUNTING
10	YH466000320	1	GUIDE, BELT





NO.	PART NUMBER	QTY.	DESCRIPTION
1	YH468000490	1	BUMPER, RUBBER
2	YH475000190	1	SPACER, 0.5 × 1.00
3	YH453000130	1	ROLLER, 0.5 × 1.00 × 1.00 NYLON
4	YH451000480	1	WASHER, 1/2 INCH NYLON
5	YH472000080	1	IDLER, 2.75 × 1.25
6	YH436000030	2	BOLT, 5/16 × 7/8 FLANGE NC
7	YH436000070	1	BOLT, 5/16 × 1-3/4 FLANGE NC
8	YH451000440	4	WASHER, 5/16 FLAT
9	YH434000050	4	BOLT, 5/16 × 3/4 GR5 CRG NC ZP
10	YH434000090	1	BOLT, 3/8 × 3-1/4 HEX HD GR5 ZP
11	YH436000010	2	BOLT, 5/16 × 3/4 FLANGE NC
12	YH449000040	10	NUT, 5/16-18 NYLOCK FLANGE
13	YH449000050	1	NUT, 3/8-16 NYLOCK FLANGE
14	YH476000170	1	SPRING, 3/4" OD EXTENSION
15	YH475000080	1	SPACER, IDLER PIVOT
16	YH475000180	3	SPACER, .50 × .25
17	YH479001020	1	SHIELD, UPPER
18	YH470000860	1	HANDLE, ENGAGEMENT
19	YH475000250	1	SPACER, 5/8 OD × 11 GA × 0.88
20	YH479001600	1	MOUNT, IDLER BRACKET
21	YH466000400	1	BRACKET, IDLER 3 IN CHIPPER



NO.	PART NUMBER	QTY.	DESCRIPTION
1	YH434000110	8	BOLT, 5/16-18 x 3/4 SN GR5 CRG
2	YH451000070	3	WASHER, 5/16" FENDER ZP
3	YH436000010	3	BOLT, 5/16 x 3/4 FLANGE NC
4	YH436000050	4	BOLT, 5/16 x 1 FLANGE NC
5	YH449000040	15	NUT, 5/16-18 NYLOCK FLANGE
6	YH479000840	1	BELTING, RENTAL HOPPER
7	YH479002200	1	ASSEMBLY, WIDE BODY RENTAL HOPPER W/ DECALS
8	YH653000180	1	+DECAL, BLADE DANGER ISO
9	YH653000190	1	+DECAL, SHREDDER SIZE ISO
10	YH653000670	2	+DECAL, ECHO
11	YH479000970	1	HANDLE, RENTAL HOPPER
12	YH653000490	1	+DECAL, MODEL SC-4213



PART NUMBER	QTY.	DESCRIPTION
99944300009	1	TAMPER,LEAF
	1	DECAL, TAMPER CAUTION
	1	WELDMENT, LEAF TAMPER



PART NUMBER	QTY.	DESCRIPTION
99944300008	1	COVER,ALL-WEATHER

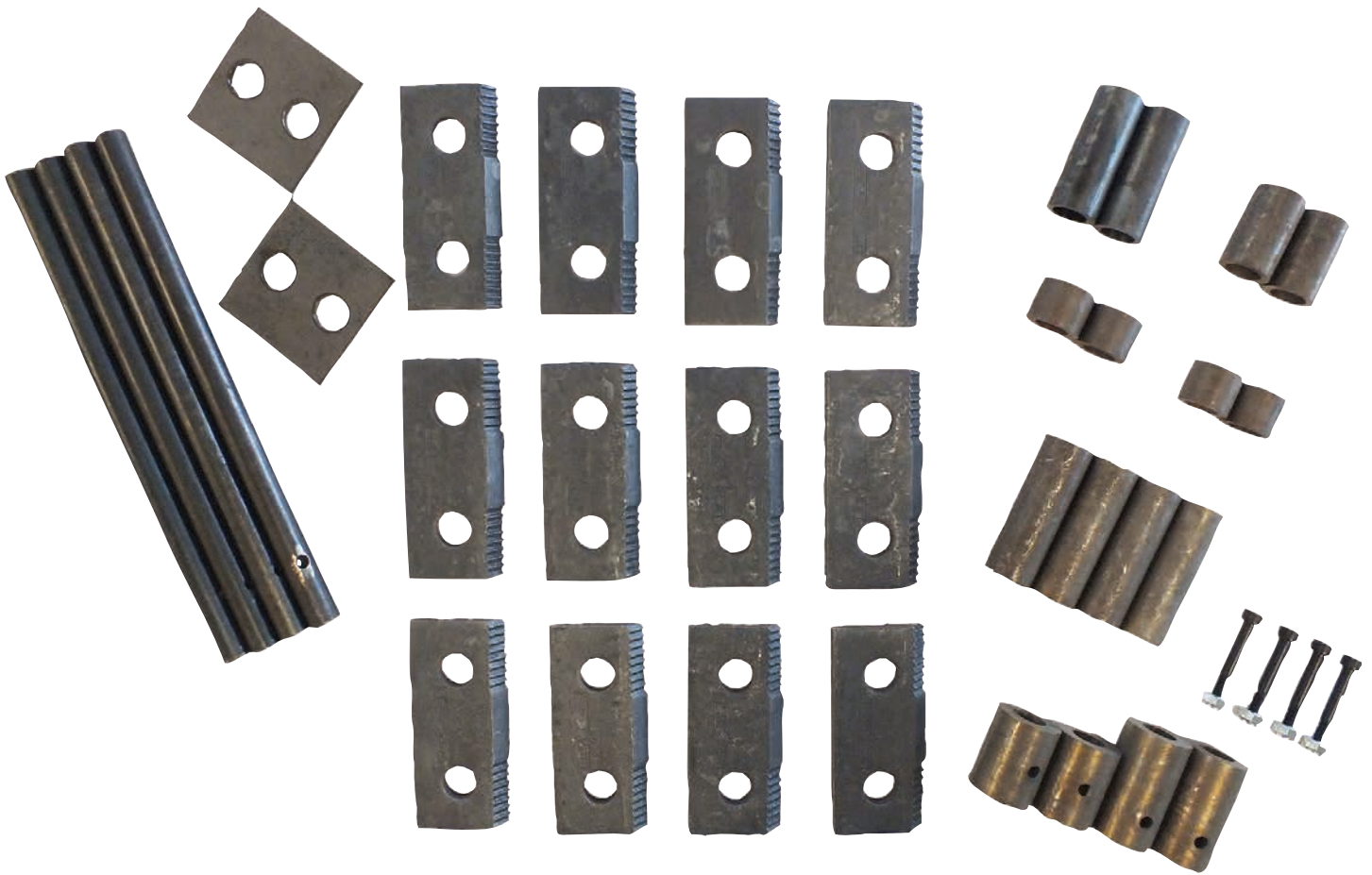


PART NUMBER	QTY.	DESCRIPTION
99944300012	1	BLOWER, ONE SPEED BLOWER
YH434000050	8	BOLT, 5/16 × 3/4 GR5 CRG NC ZP
YH484000040	1	SHAFT, BLOWER IMPELLER
YH479002220	1	WELDMENT, BLOWER IMPELLER
YH479002210	1	WELDMENT, BLOWER ATTACHMENT
YH453000160	4	FLANGETTE, 52 mm 3 BOLT TRIANGLE
YH653000820	1	DECAL, SHIELD DANGER ANSI
YH449000020	3	NUT 5/16"-18 TINNEMAN U-TYPE
YH436000080	1	BOLT, 5/16 × 2-1/4 FLANGE NC
YH653000170	2	DECAL, SHIELD DANGER ISO
YH467000660	1	SPOUT, BLOWER TUBE
YH467000650	1	BLOWER TUBE
YH452000760	1	CLAMP, T-BOLT 4-1/4" ID ZP
YH472000130	2	PULLEY, 3" OD A GROVE 1" BORE
YH454000050	1	4L390 BELT
YH469000050	2	KEY, 1/4 SQ × 1-1/2 LG PLAIN
YH452000770	1	KNOB, SPOUT 5/16-18
YH451000440	2	WASHER, 5/16 FLAT
YH436000010	3	BOLT, 5/16 × 3/4 FLANGE NC
YH449000040	8	NUT, 5/16-18 NYLOCK FLANGE
YH479002230	1	WELDMENT, BLOWER BELT GUARD



PART NUMBER	QTY.	DESCRIPTION
99944300011	1	KIT,3" DEBRIS BAG
YH449000070	2	NUT, 5/16 NYLOCK
YH434000170	2	BOLT, 5/16-8 X 7/8 HCS
YH486000000	1	BAG,3" DISCHARGE DEBRIS
YH479002240	1	WELDMENT, BAG FRAME

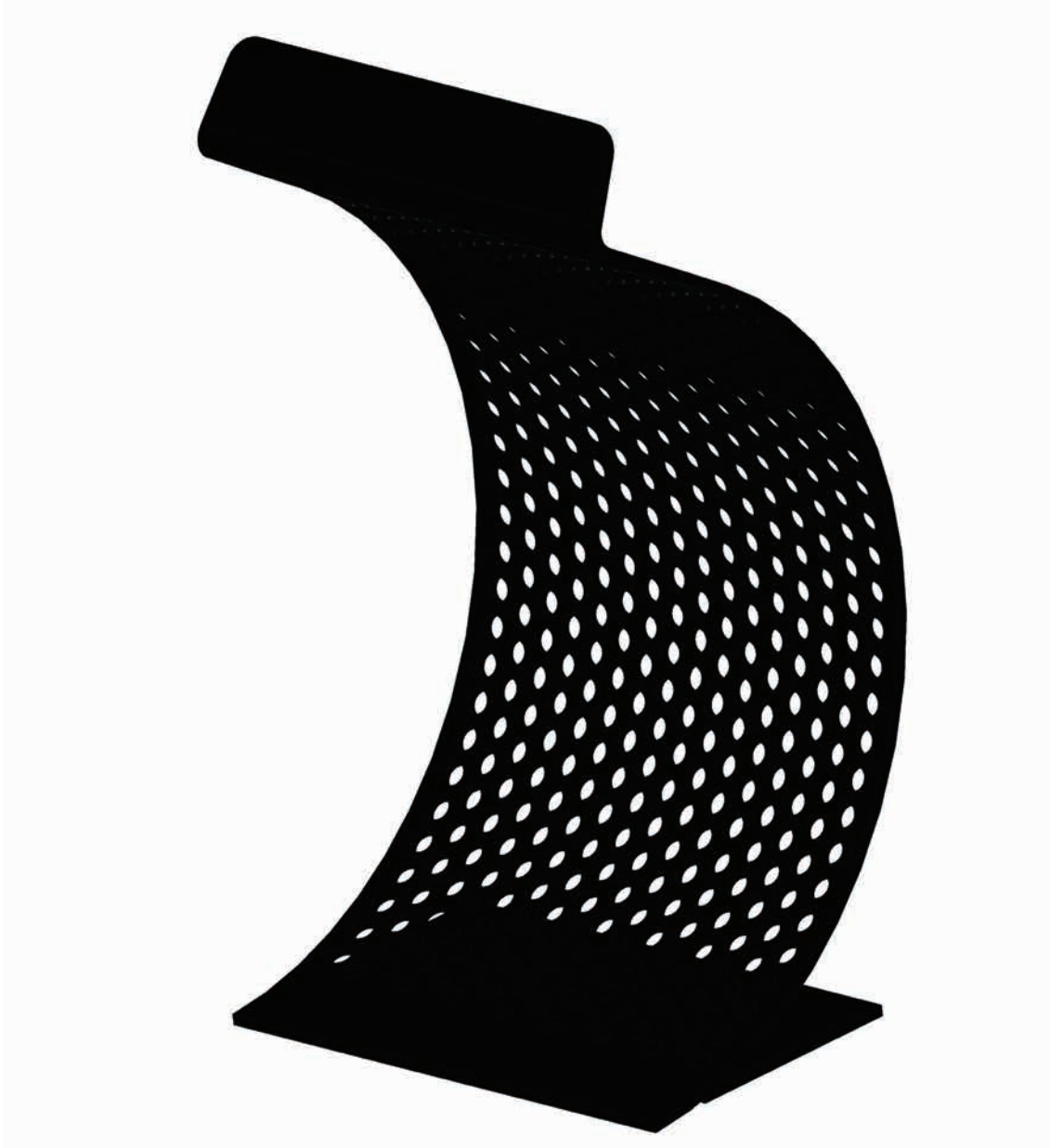




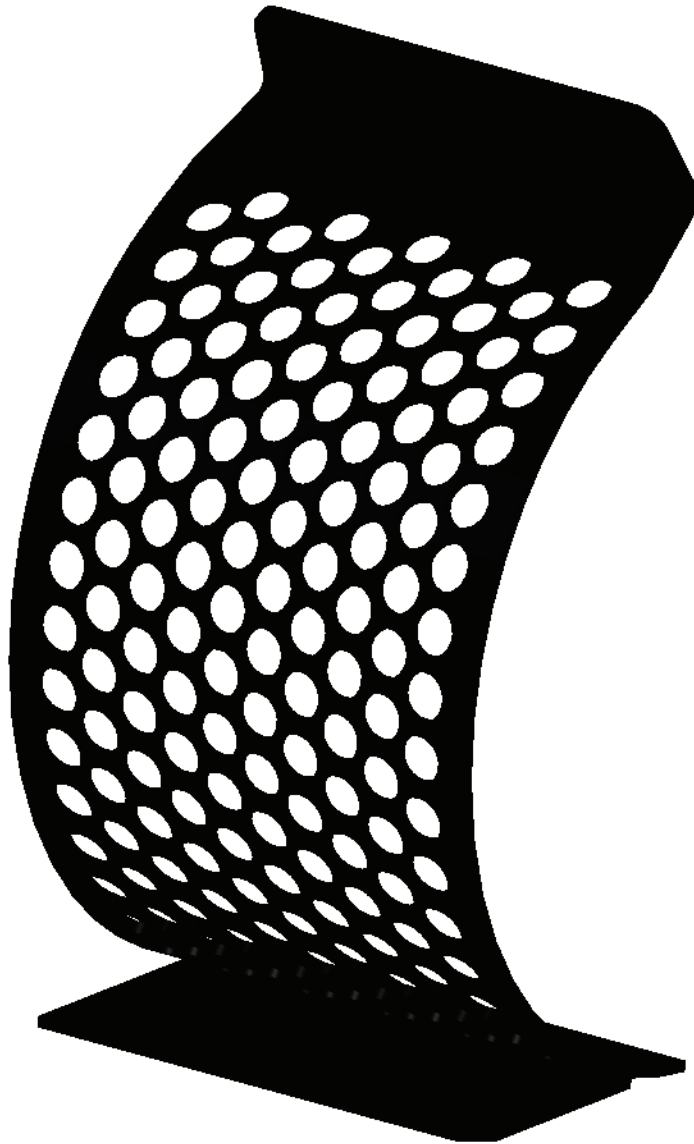
PART NUMBER	QTY.	DESCRIPTION
99944300014	1	KIT,WIDE SHREDDER
YH450000210	4	NUT
YH415000130	4	SCREW, SKT HD CAP #10-24 x 1-3/8" PL
YH466000020	4	GUIDE, STARTING ROPE
YH475000110	4	SPACER, 0.75 x 2.170
YH475000120	2	SPACER, 0.75 x 0.620
YH475000130	2	SPACER, 0.75 x 1.850
YH475000140	2	SPACER, 0.75 x 1.240
YH475000150	2	SPACER, 1.00 x 1.700 (W/ HOLE)
YH475000160	2	SPACER, 1.00 x 1.240 (W/ HOLE)
YH457000010	12	KNIFE, RECTANGULAR SHREDDING
YH457000020	2	KNIFE, ROTOR BALANCE
YH475000170	2	SPACER, .81 x .620



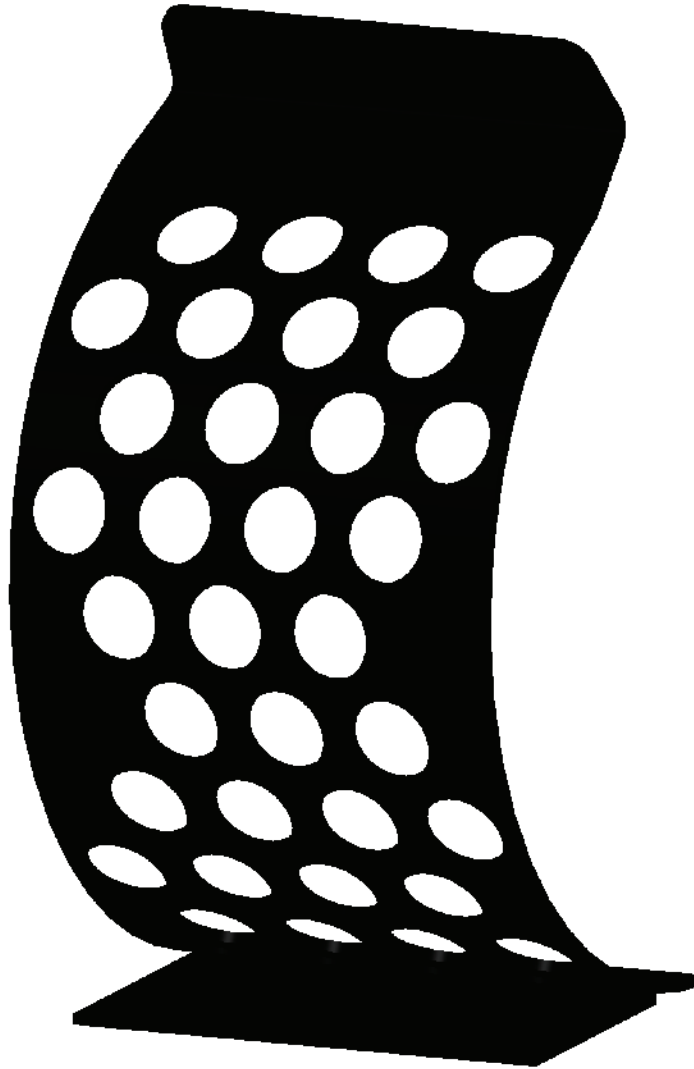
PART NUMBER	QTY.	DESCRIPTION
99944300010	1	KIT,TWO WHEEL TOW
YH434000070	1	BOLT, 3/8 × 2 GR5 HEX CAPSCREW ZP
YH434000010	2	BOLT, 5/8 × 3 HEX HD GR5 ZP
YH449000080	1	NUT, 3/8" NE NYLOCK ZP
YH478000060	2	ASSEMBLY, 410/350-4 FLAT-FREE WHEEL
YH479002270	1	WELDMENT, TOW BAR
	1	ASSEMBLY,TWO WHEEL TOW KIT (INCLUDES ITEMS 8-13)
YH449000060	1	NUT, 1/2-13 CENTERLOCK GRB ZPCNH FC 1551
YH434000120	1	BOLT, 1/2-13X 2-1/2 HHCS
YH451000320	2	WASHER, 1/2 SAE FLAT
YH468001670	4	GASKET KIT, CYLINDER HEAD
YH479002280	1	WELDMENT,HITCH BOTTOM
YH470002290	1	WELDMENT,HITCH TOP



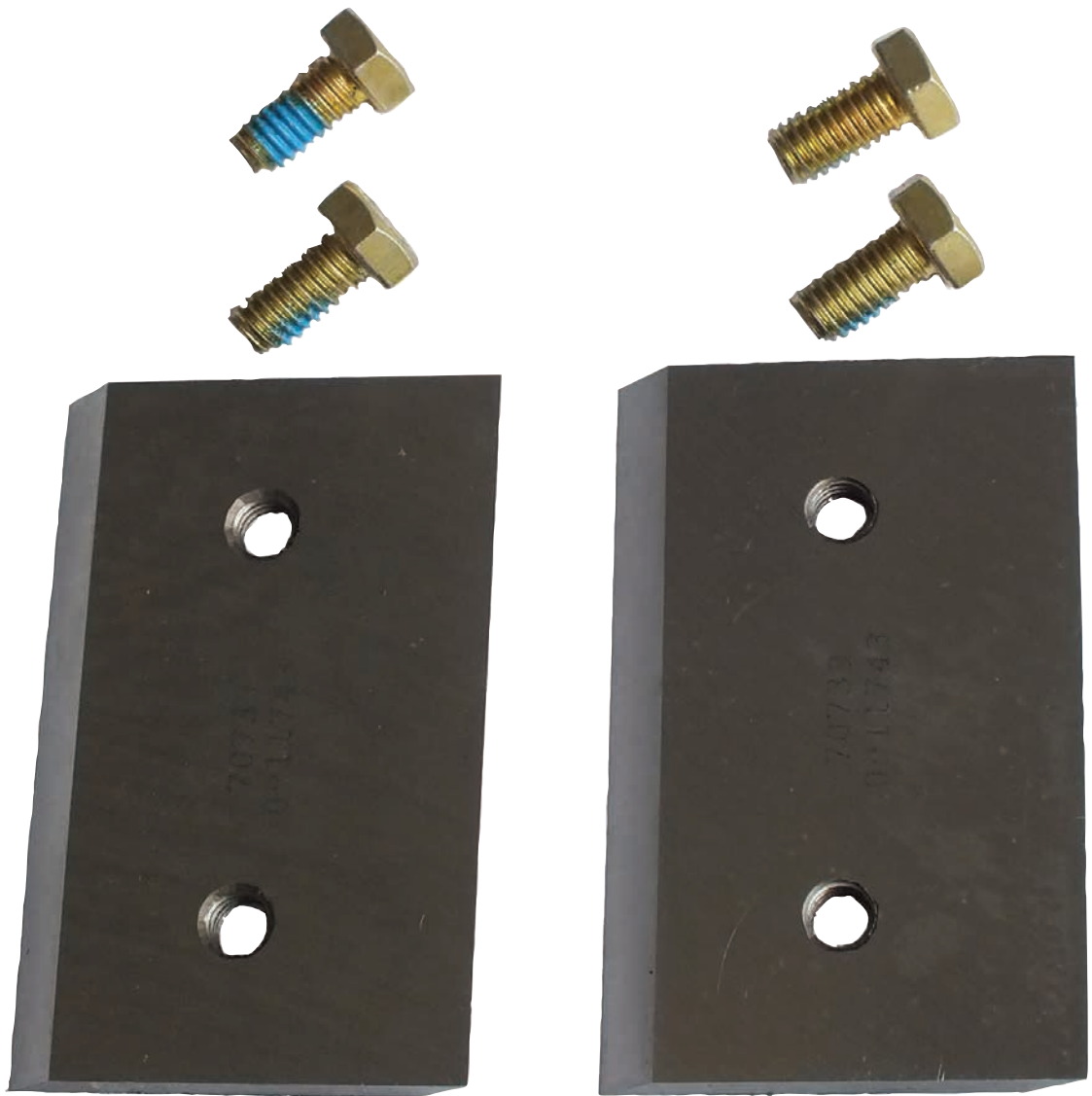
PART NUMBER	QTY.	DESCRIPTION
99944300000	1	KIT, 3 IN DEBRIS SCREEN - FINE (3/8" DIA)
	1	WELDMENT,WIDE FINE TAPERED



PART NUMBER	QTY.	DESCRIPTION
9994430001	1	KIT, 3 IN DEBRIS SCREEN - MEDIUM (3/4" DIA)
	1	WELDMENT,WIDE MEDIUM TAPERED



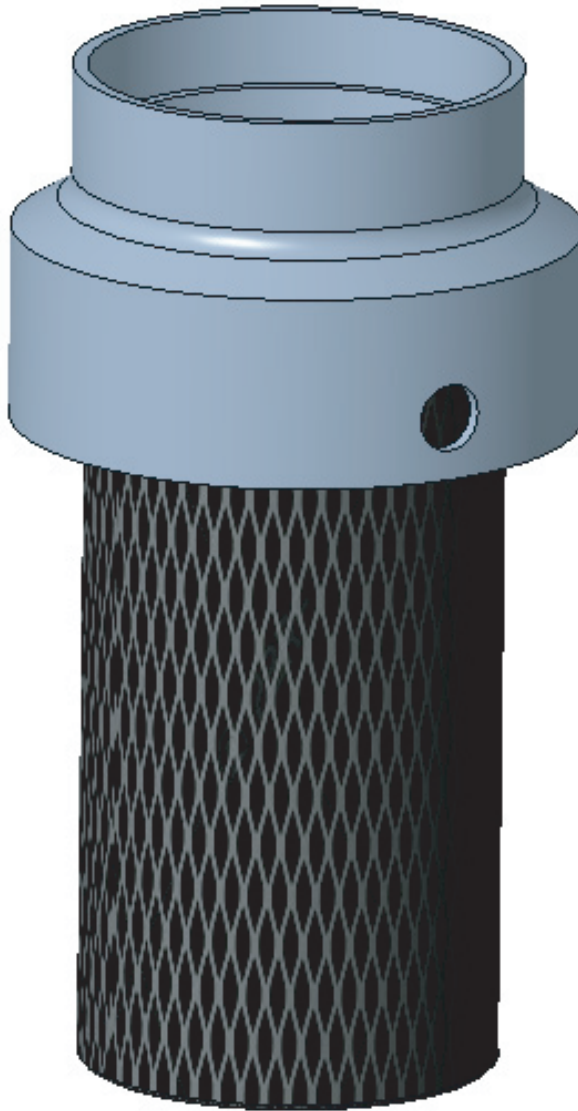
PART NUMBER	QTY.	DESCRIPTION
99944300002	1	WELDMNT, WIDE COARSE TAPERED
	1	WELDMNT,WIDE COURSE TAPERED



PART NUMBER	QTY.	DESCRIPTION
99944300013	1	KIT, CHIPPER BLADE
	4	BOLT,5/16-18 X 5/8 HCS GR 8 PATCH Z
	2	BLADE,TWO ESDGE CHIPPER



PART NUMBER	QTY.	DESCRIPTION
99944300003	1	KIT,3 IN DEBRIS SCREEN - WET
	1	WELDMENT, WIDE LEAF TAPERED



PART NUMBER	QTY.	DESCRIPTION
YH460000210	1	KIT, SPARK ARRESTER BRIGGS 306/420CC
	1	SPARK ARRESTER, BRIGGS 306/420CC