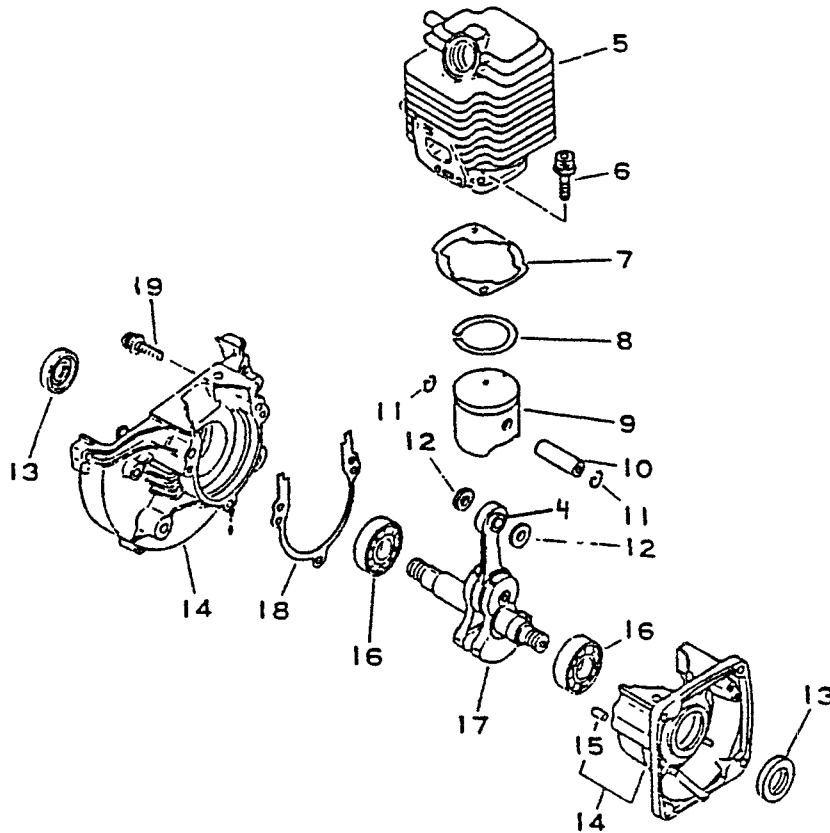




**POWER BLOWER
PARTS CATALOG
MODEL PB-1000
MODEL PB-1010
SERIAL NUMBER 001001 & 066000**

**ECHO, INCORPORATED
400 OAKWOOD ROAD
LAKE ZURICH, IL 60047**

**999222 02405
06/94**



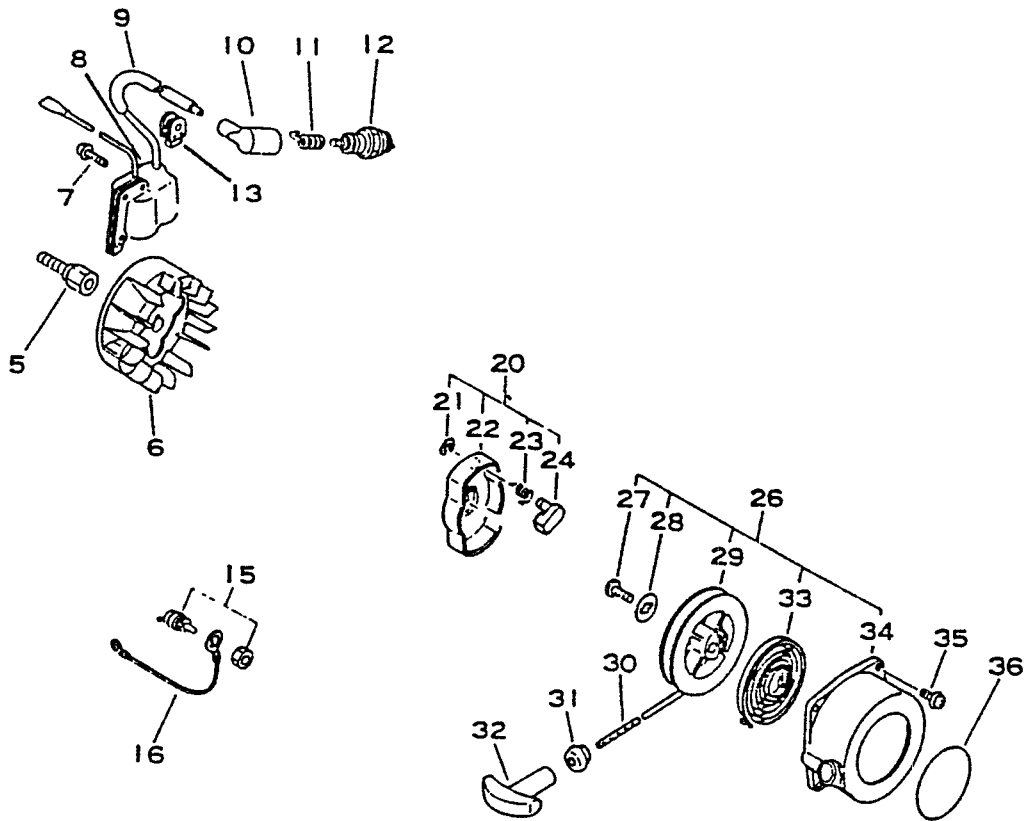
KEY LV	PART NUMBER	Q'TY	DESCRIPTION	APPLICATION	REMARKS	INF. NR
4	100012-11520	1	BEARING, NEEDLE			
5	101011-45230	1	CYLINDER			
6	900162-05022	2	BOLT, H.S. 5#22			
*7		1	GASKET, CYL. BASE		USE KIT	
8	100011-05330	1	RING, PISTON			
9	100010-44330	1	PISTON			
10	100013-11520	1	PIN, PISTON			
11	100015-04630	2	CIRCLIP, PISTON PIN			
12	100014-11520	2	SPACER, PISTON PIN			
13	100212-42030	2	OILSEAL			
14	100200-42030	1	CRANKCASE SET			
15	+ 100215-03930	2	PIN, DOWEL			
16	900810-36201	2	BEARING, BALL 6201			
17	100100-44730	1	CRANKSHAFT ASSEMBLY	(INC. 100012-11520, #4)		
*18		1	GASKET, CRANKCASE		USE KIT	
19	900238-05028	3	SCREW 5#28			

* GASKET KIT, P/N 889000-05061

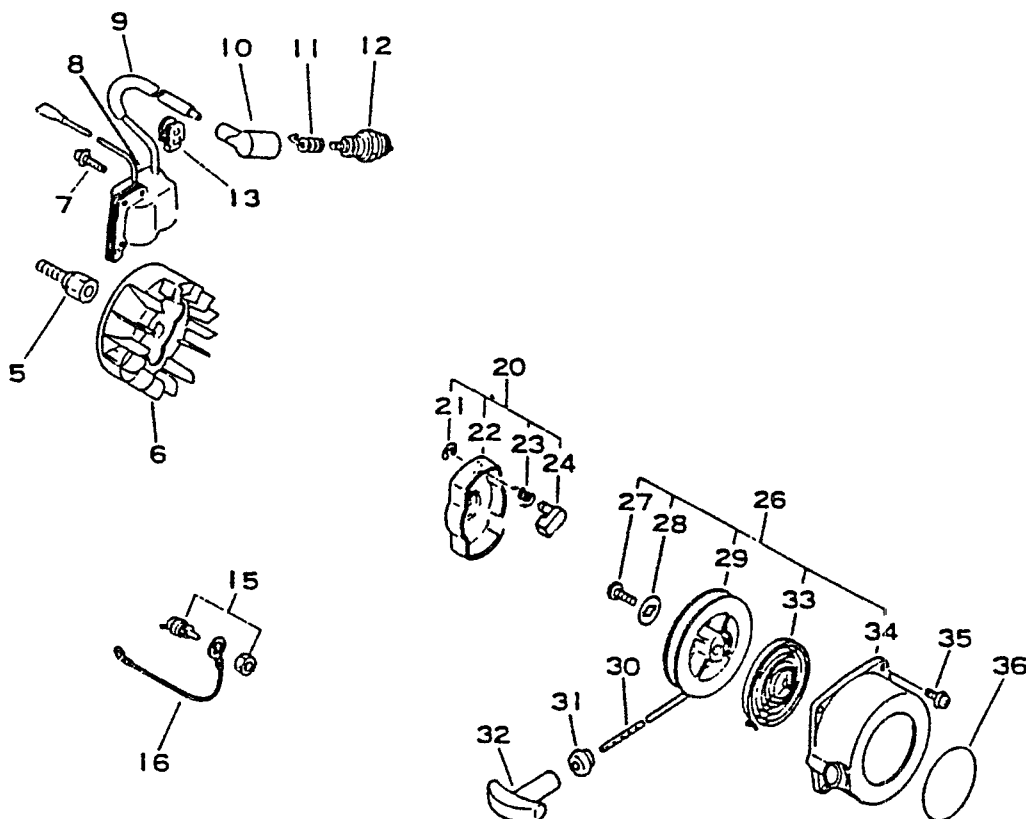
PB-1000 (2)

PB-1010 (2)

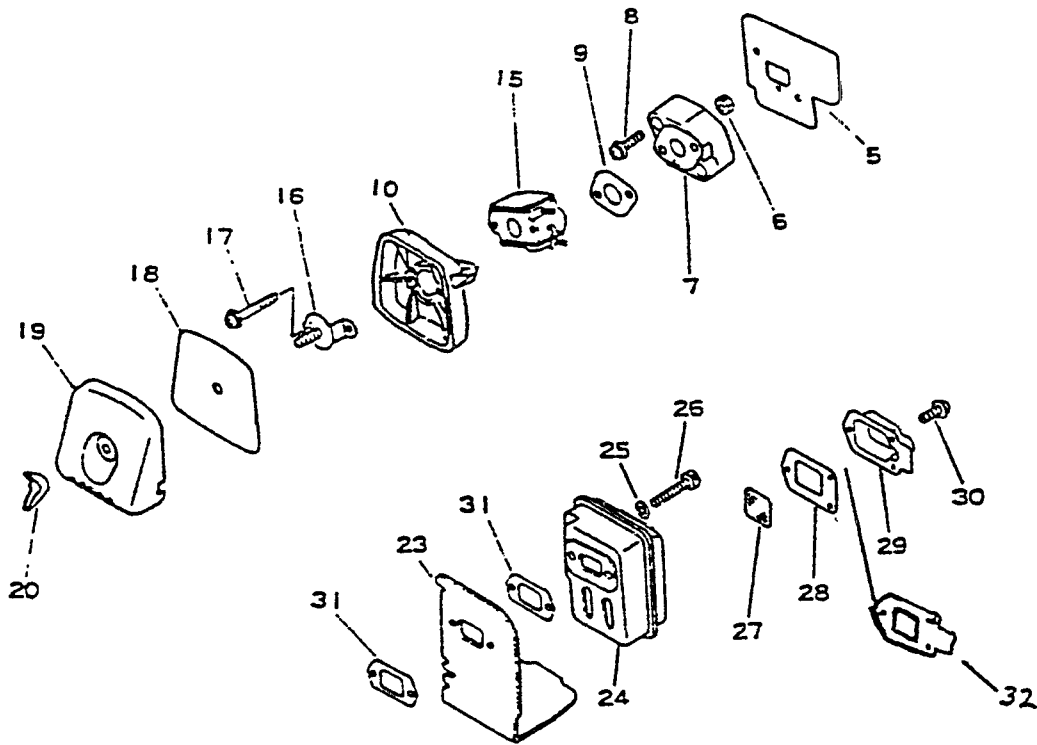
A 3



KEY LV	PART NUMBER	Q'TY	DESCRIPTION	APPLICATION	REMARKS	INF. NR
5	200011-05660	1	HUB, FAN			
6	156801-44730	1	FLYWHEEL			
7	900238-04022	2	SCREW 4#22			
8	156601-05060	1	COIL, IGNITION			
9	156611-05060	1	TUBE			
10	159012-01620	1	CAP, SPARK PLUG			
11	159011-03432	1	COIL, SPARK PLUG CAP			
12	159010-10630	1	PLUG, SPARK (BPM-7A)			
12	159010-10230	1	PLUG, SPARK (BPMR-7A)			
13	150112-05060	1	GROMMET			
15	163400-03460	1	SWITCH, IGNITION			
16	162010-05060	1	LEAD, GROUND			



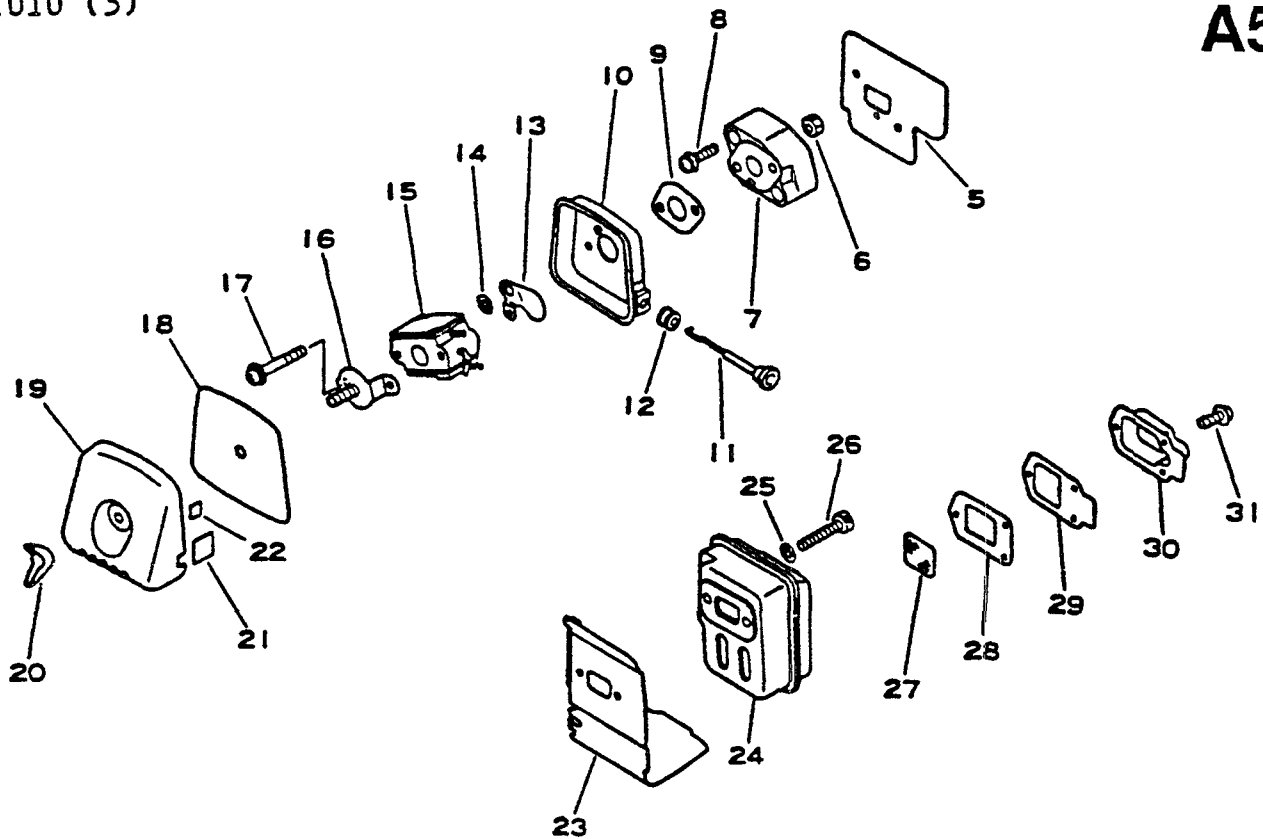
KEY	LV	PART NUMBER	Q'TY	DESCRIPTION	APPLICATION	REMARKS	INF. NR
		20	1	PAWL ASM., STARTER			
		21	1	E-RING 4			
		22	1	CATCHER, PAWL			
		23	1	SPRING, RETURN			
		24	1	PAWL, STARTER			
		26	1	STARTER ASSEMBLY			
		27	1	SCREW			
		28	1	WASHER			
		29	1	DRUM, STARTER			
		30	1	ROPE, STARTER			
		31	1	GUIDE, ROPE			
		32	1	GRIP, STARTER			
		33	1	SPRING, REWIND			
		34	1	CASE, STARTER			
		35	2	SCREW 4#18			
		36	1	LABEL, ECHO			



KEY I.V	PART NUMBER	Q'TY	DESCRIPTION	APPLICATION	REMARKS	INF. NR
5	130010-05060	1	GASKET, INTAKE			
6	900500-00005	2	NUT 5			
7	130017-05060	1	INSULATOR			
8	900238-05022	2	SCREW 5*22			
9	130016-42030	1	GASKET, INTAKE			
*10	130307-05660	1	CASE ASS'Y AIR CLEANER			
15	125200-05060	1	CARBURETOR ASSEMBLY			
16	129011-05060	1	PLATE, PREVENT			
17	900242-05064	2	SCREW 5*64			
18	130310-04560	1	FILTER, AIR			
19	130313-05060	1	COVER, AIR CLEANER			
20	130415-04560	1	NUT, WING 5			
A23	145871-05760	1	COVER, MUFFLER			
A24	145810-44330	1	MUFFLER			
25	900600-00005	2	WASHER 5			
26	900105-05055	2	BOLT, H.S. 5*55			
A27	145862-40630	1	SCREEN, MUFFLER			
A28	145866-42030	1	GASKET, MUFFLER LID			
*A29	145876- 05060	1	LID, MUFFLER			
A30	900242-04010	3	SCREW 4*10			
A31	145510-42030	2	GASKET, MUFFLER			
*A32	145876- 42030	1	PLATE			

* FOR UNITS WITH METAL AIR CLEANER CASE, SEE NEXT PAGE
 A-INCLUDED IN MUFFLER ASS'Y, 145800-05061

*REVISED 04/93

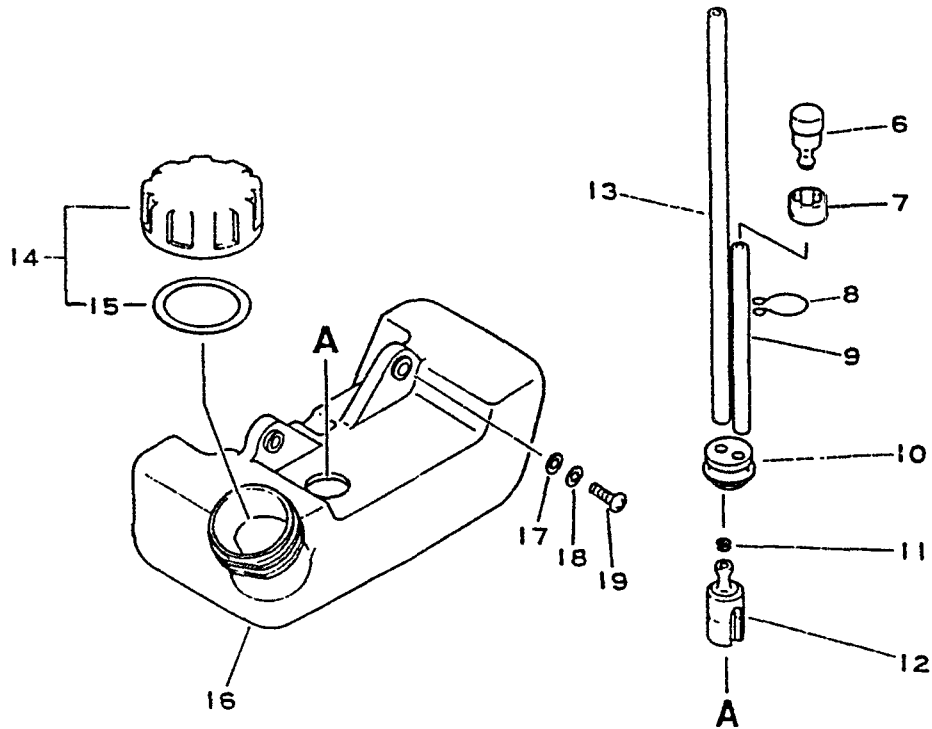


KEY	LV	PART NUMBER	Q'TY	DESCRIPTION	APPLICATION	REMARKS	INF. NR
-----	----	-------------	------	-------------	-------------	---------	---------

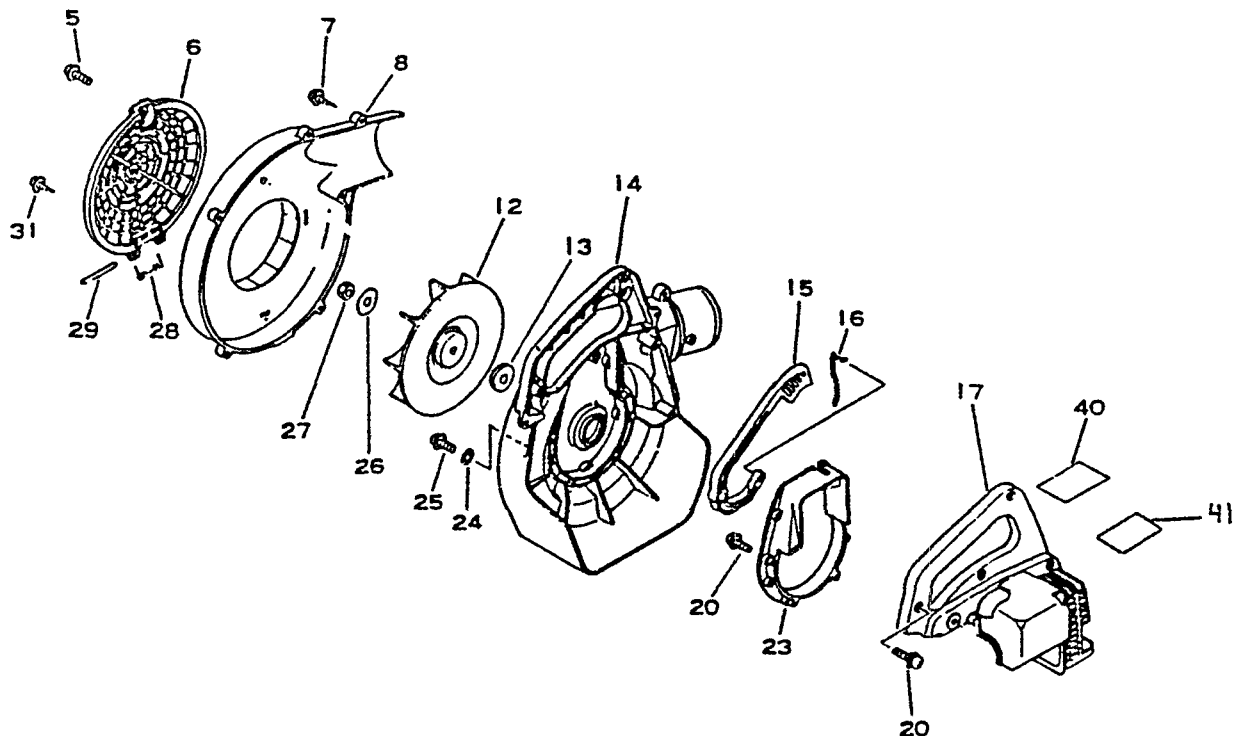
10		130314-05060	1	CASE, AIR CLEANER			
11		178510-05060	1	ROD, CHOKE			
12		178810-05230	1	BUSHING			
13		178515-05060	1	SHUTTER, CHOKE			
14		178516-00830	1	SPACER			
15		125200-05060	1	CARBURETOR ASSY			
16		130405-04560	1	PLATE, PREVENT			
17		900242-05057	2	SCREW 5*57			

For units with plastic Air Cleaner Case, see previous page.

*18		130310 04560	1	Element, Air Filter			
*19		130313 04561	1	Cover, Air Filter			
*20		230415 04560	1	Nut, Wing			
*21		890158 06230	1	Label, Caution			
*22		890121 12331	1	Label, Choke			

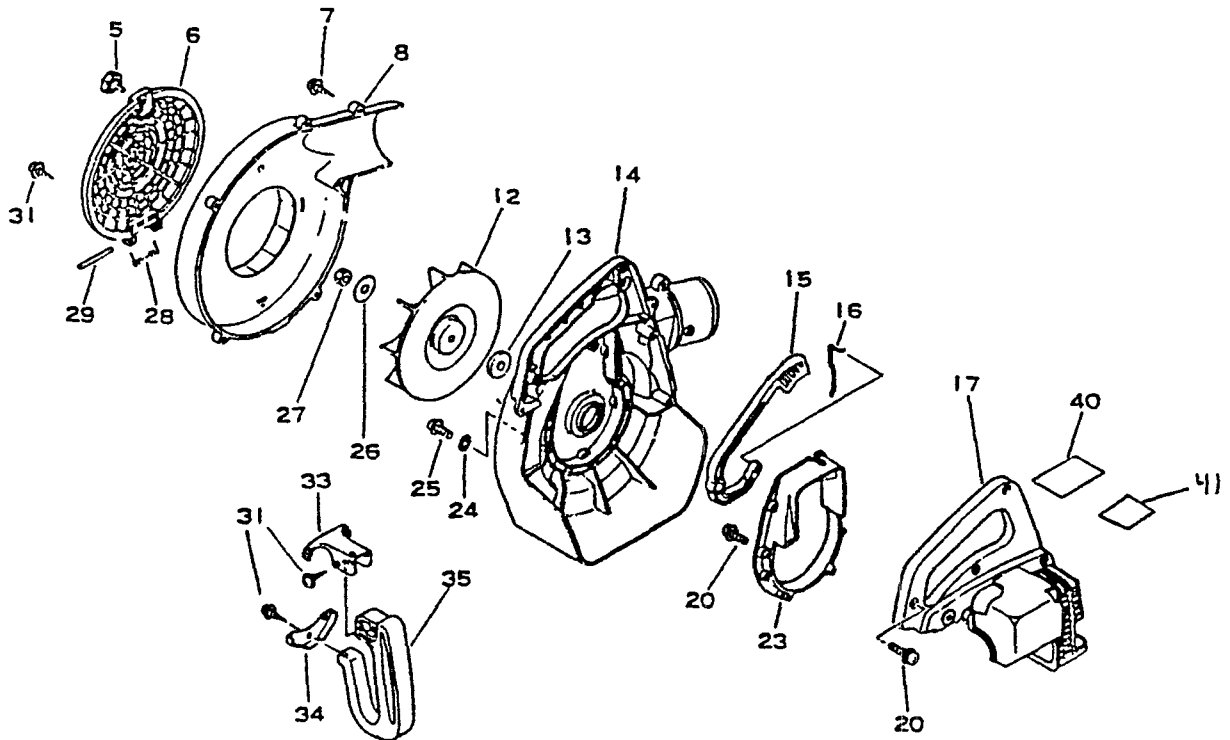


KEY	LV	PART NUMBER	Q'TY	DESCRIPTION	APPLICATION	REMARKS	INF. NR
6		131300-40630	1	VENT ASSEMBLY			
7		131328-40630	1	COVER, VENT			
8		132013-05060	1	CLIP, PIPE			
9		132010-44330	1	PIPE	3*5* 70		
10		132115-44330	1	GROMMET			
11		132013-09820	1	CLIP			
12		131205-07320	1	STRAINER, FUEL			
13		132010-13930	1	PIPE, FUEL			
14		131004-40930	1	CAP ASS'Y, FUEL TANK			
15	+	131016-40930	1	GASKET, F. TANK CAP			
16		131005-05061	1	TANK, FUEL			
17		900603-00005	2	WASHER 5			
18		900605-00005	2	WASHER, SPRING 5			
19		900220-05016	2	SCREW 5*16			

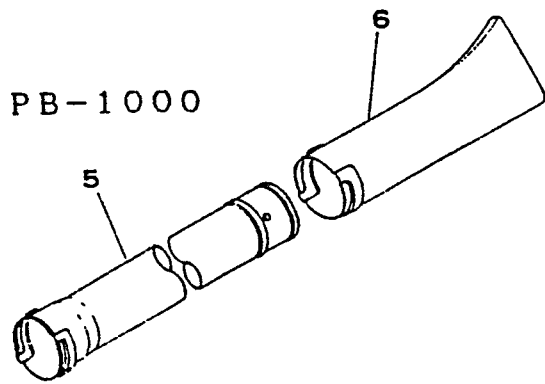


KEY LV	PART NUMBER	Q'TY	DESCRIPTION	APPLICATION	REMARKS	INF. NR
5	900238-05018	1	SCREW 5*18			
6	200124-05060	1	GRID, FAN CASE			
7	900252-05020	6	SCREW 5*20			
8	200105-05060	1	CASE, FAN			
12	200010-05061	1	FAN			
13	100132-05660	1	WASHER 8			
14	200110-05060	1	CASE, FAN			
15	178010-05060	1	CONTROL, THROTTLE			
16	178011-05060	1	ROD, THROTTLE			
17	104008-05060	1	COVER, ENGINE			
20	900238-04018	6	SCREW 4*18			
23	104930-05060	1	BASE, ENGINE			
24	104032-05060	6	WASHER			
25	900238-04022	5	SCREW 4*22			
*26	100132-05660	1	WASHER			
27	900500-00008	1	NUT 8			
28	200152-05060	1	SPRING, GRID			
29	200150-05060	1	SHAFT, GRID			
31	900252-05020	6	SCREW 5*20			
40	890112-05060	1	LABEL, MODEL			
41	890194-05060	1	LABEL, CAUTION			

*REVISED 06/94

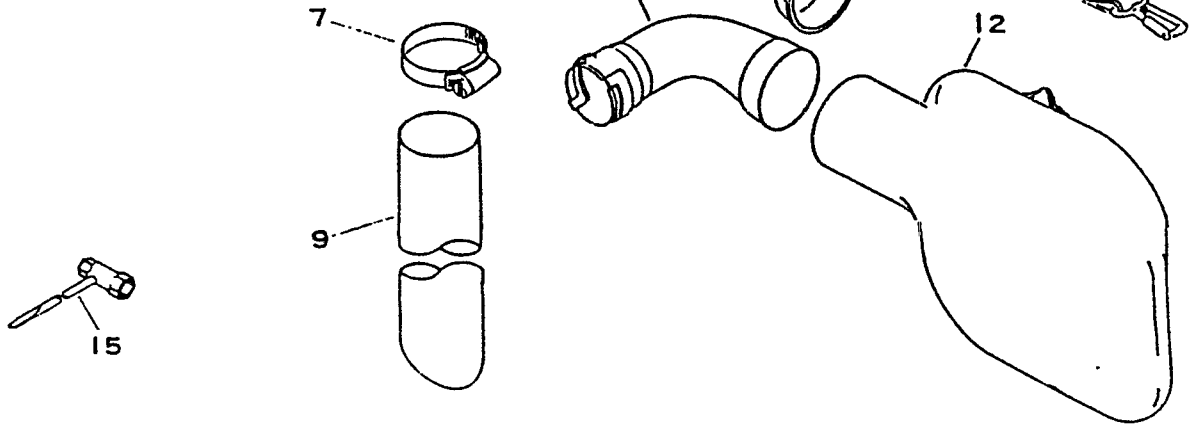


KEY LV	PART NUMBER	Q'TY	DESCRIPTION	APPLICATION	REMARKS	INF. NR
5	130406-05060	1	KNOB			
6	200124-05060	1	GRID, FAN CASE			
7	900252-05020	6	SCREW 5#20			
8	200105-05060	1	CASE, FAN			
12	200010-05061	1	FAN			
13	100132-05660	1	WASHER 8			
14	200110-05060	1	CASE, FAN			
15	178010-05060	1	CONTROL, THROTTLE			
16	178011-05060	1	ROD, THROTTLE			
17	104008-05060	1	COVER, ENGINE			
20	900238-04018	6	SCREW 4#18			
23	104930-05060	1	BASE, ENGINE			
24	104032-05060	6	WASHER			
25	900238-04022	5	SCREW 4#22			
26	100136-05060	1	WASHER			
27	900500-00008	1	NUT 8			
28	200152-05060	1	SPRING, GRID			
29	200150-05060	1	SHAFT, GRID			
31	900252-05020	9	SCREW 5*20			
33	351011-05060	1	BRACKET, HANDLE			
34	351028-05060	1	BRACKET, HANDLE			
35	351010-05060	1	HANDLE, REAR			
40	890114-05060	1	LABEL, MODEL			
41	890194-05060	1	LABEL, CAUTION			



PB-1000

PB-1010

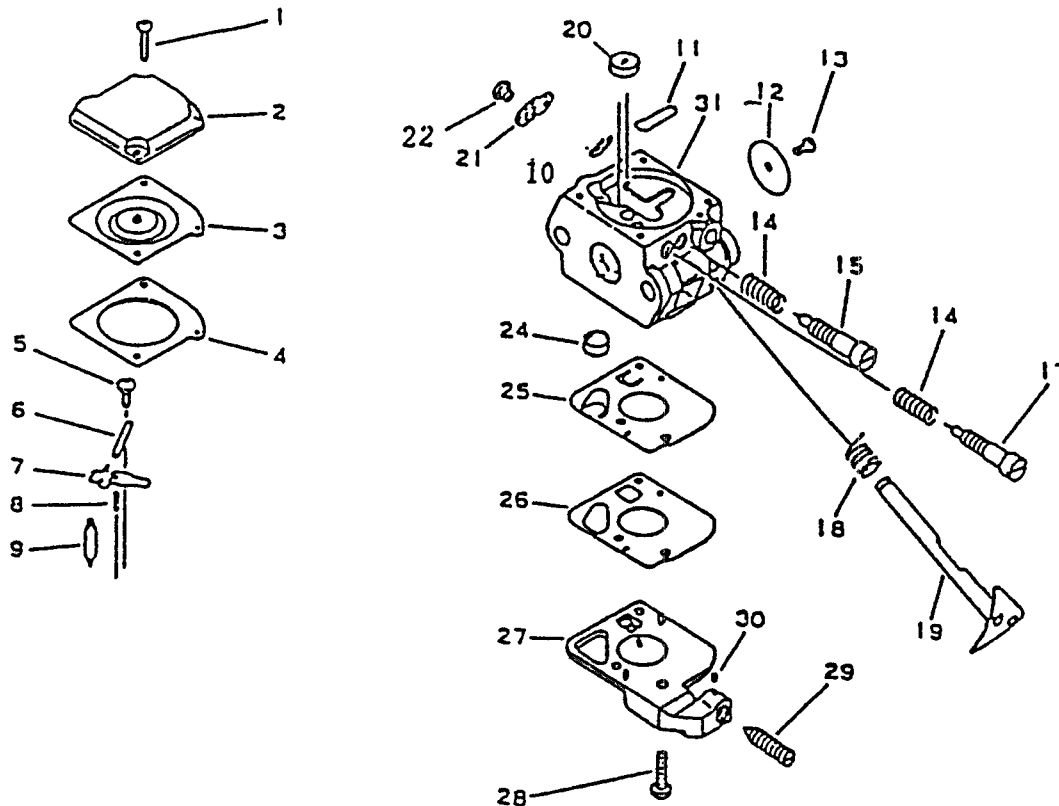


PB-1000

KEY LV	PART NUMBER	Q'TY	DESCRIPTION	APPLICATION	REMARKS	INF. NR
5	210015-05060	1	PIPE, BLOWER			
6	210031-05060	1	NOZZLE, FAN HEAD			
15	895410-00430	1	WRENCH, W/S-DRIVER			

PB-1010

KEY LV	PART NUMBER	Q'TY	DESCRIPTION	APPLICATION	REMARKS	INF. NR
5	210015-05060	1	PIPE, BLOWER			
6	210031-05060	1	NOZZLE, FAN HEAD			
7	210413-05060	1	CLAMP, FLEXIBLE PIPE			
9	210027-05060	1	ADAPTER, PIPE			
10	215013-01961	1	RING			
11	215012-05060	1	CONNECTOR			
12	+ 880814-05060	1	BAG, DUST			
13	301005-05060	1	HARNESS, SHOULDER			
15	895410-00430	1	WRENCH, W/S-DRIVER			



KEY	LV	PART NUMBER	Q'TY	DESCRIPTION	APPLICATION	REMARKS	INF. NR
		125200-05060	1	CARBURETOR ASSY			
1	+	125344-13931	2	SCREW			
2	+	125342-15130	1	COVER, DIAPHRAGM			
3	+	A B	1	DIAPHRAGM			
4	+	A B	1	GASKET, METERING			
5	+	125339-42030	1	SCREW			
6	+	A	1	PIN,			
7	+	A	1	LEVER, METERING CHAM			
8	+	A	1	SPRING, COIL			
9	+	A	1	VALVE, NEEDLE			
10	+	125327-13930	1	CLIP			
11	+	A	1	PLUG, WELCH			
12	+	125316-42030	1	VALVE, THROTTLE			
13	+	A	1	SCREW			
14	+	125319-42030	2	SPRING, COIL			
15	+	125320-42030	1	NEEDLE, HIGH SPEED			
17	+	125318-42030	1	NEEDLE, IDLE			
18	+	125313-42030	1	SPRING, THRT. RETURN			
19	+	125317-05060	1	SHAFT, THROTTLE			
* 20	+	125376 06360	1	ORIFICE, MAIN FUEL			
21	+	125350-05060	1	LEVER, THROTTLE			
22	+	125348-13930	1	SCREW			
24	+	A	1	STRAINER			
25	+	A B	1	DIAPHRAGM, FUEL PUMP			
26	+	A B	1	GASKET, FUEL PUMP			
27	+	125324-42030	1	COVER, PUMP			
28	+	125310-42030	2	SCREW			
29	+	125334-13930	1	SCREW, IDLE ADJUST			
30	+	125378-13930	1	PIECE, FRICTION			

(A) Use Carburetor diaphragm/gasket kit ; 125303-42030

(B) Use Carburetor repair kit ; 125302-42030

*REVISED 04/93