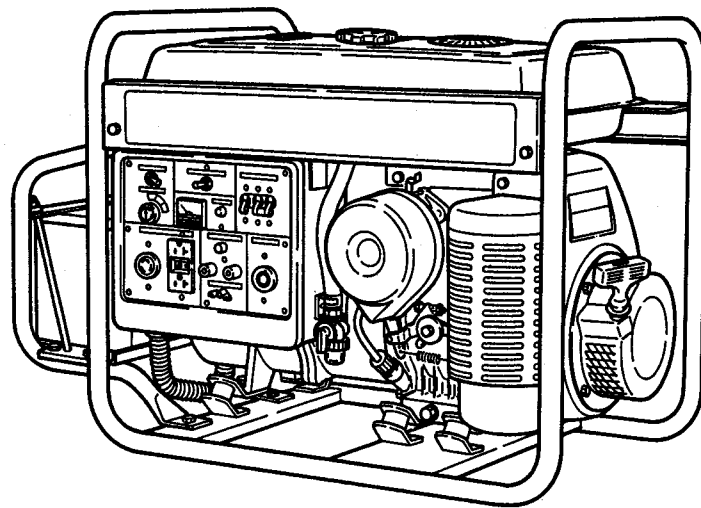


# PARTS CATALOGUE



EG-5500E

## GENERATOR

 **DANGER**  
READ RULES FOR SAFE OPERATION  
AND INSTRUCTIONS CAREFULLY

**ECHO**<sup>®</sup>

## ENGINE

The **ECHO, INCORPORATED EG-5500E** generator is powered by a Wisconsin Robin engine, Model **W1-390**, specification number 800680.

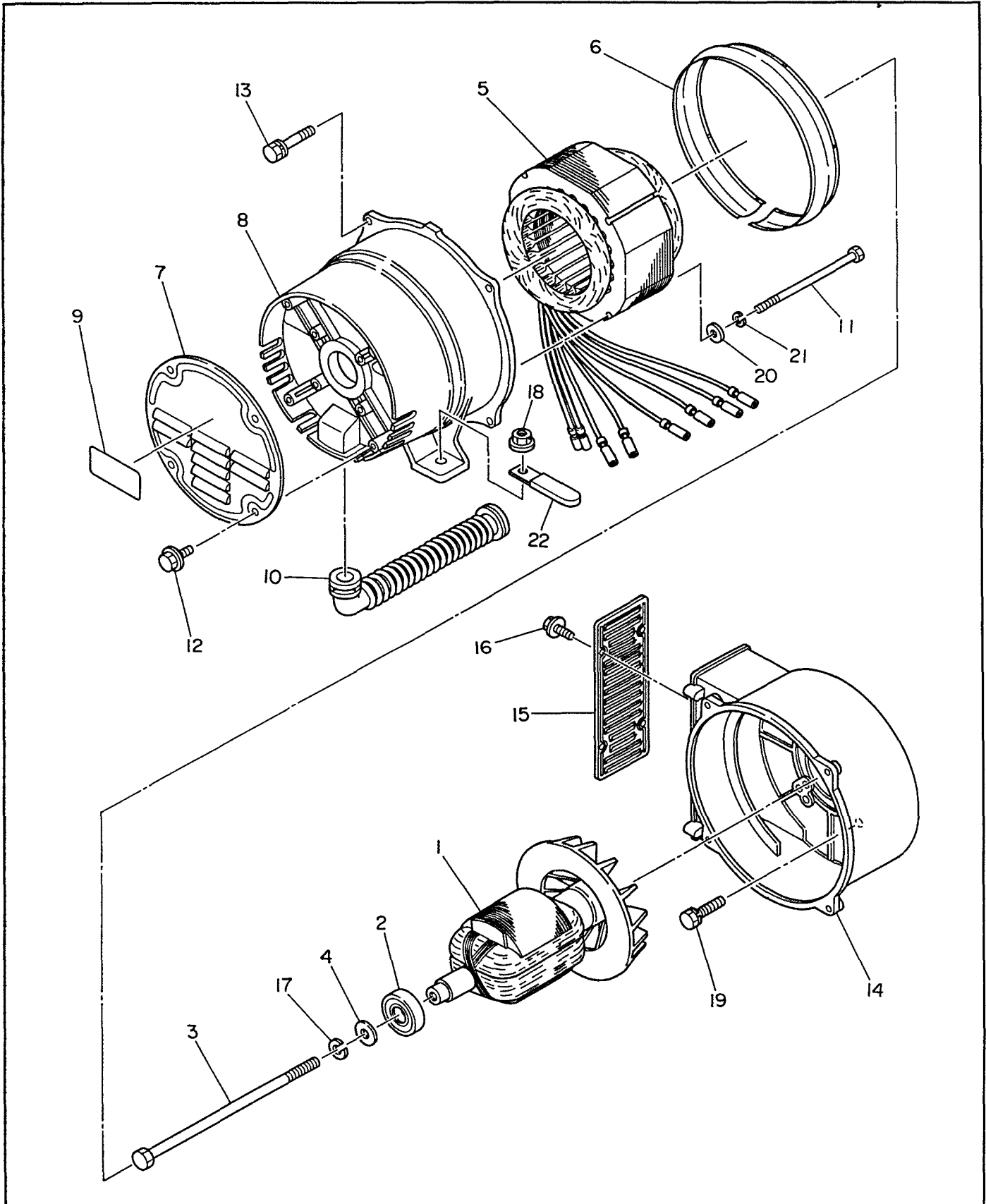
If any parts, warranty technical service information or service are required for this engine, contact the **ECHO DEALER** service center nearest your location.

Before informing them of a service requirement, be prepared to supply the following information ;

1. Engine model .....found on flywheel shroud.
2. Specification number..... found on flywheel shroud.
3. Serial number..... stamped in crankcase base.

You will also be asked for the hours of use, and the date the engine was put into service.

FIG.1 GENERATOR





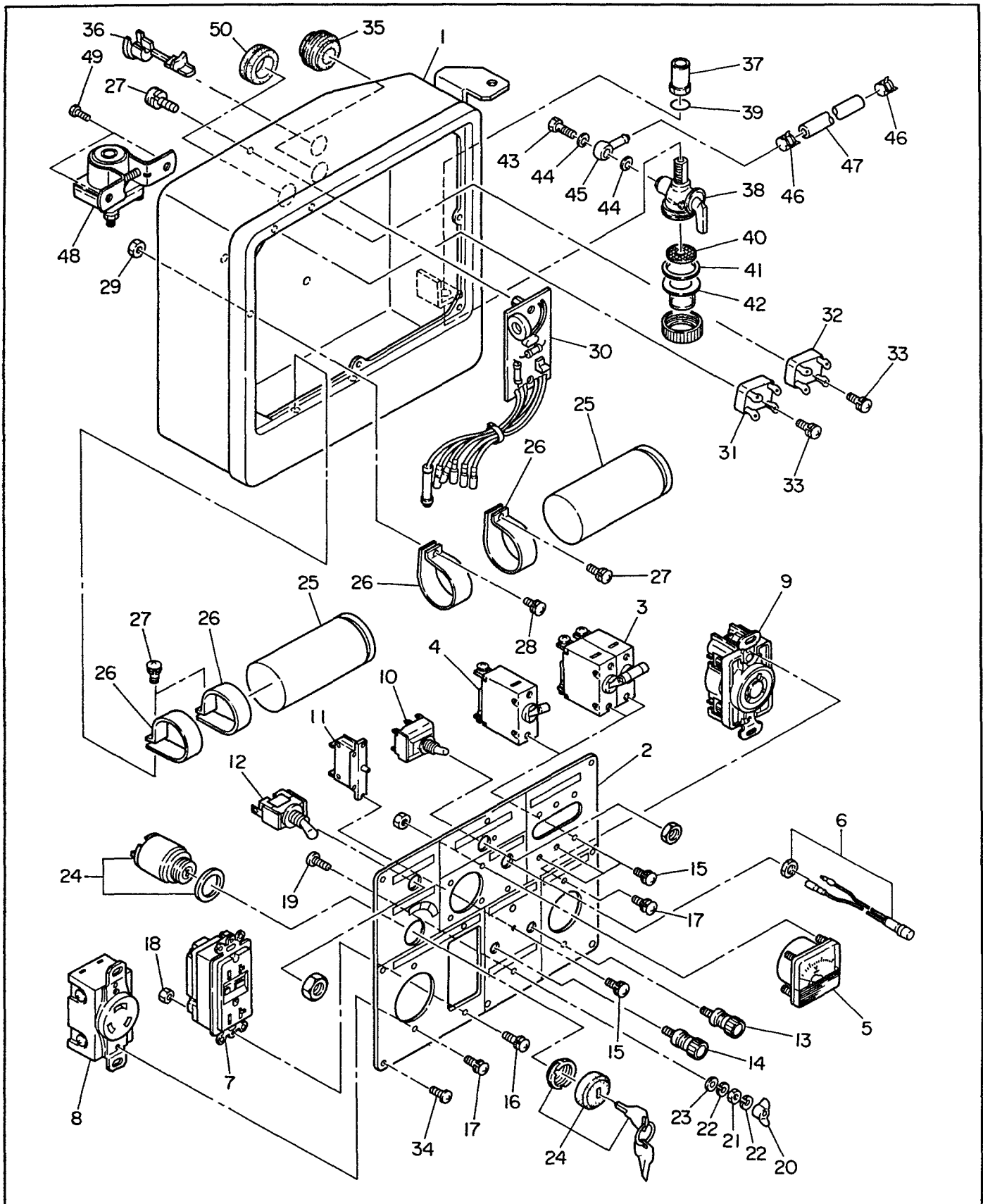


## FIG.2 PIPE FRAME and FUEL TANK

Ref. No.	Parts Number	Description	Q'ty	Execution
1	10390-31001-01	PIPE FRAME, compl.	1	
2	10390-31101-01	SIDE PLATE, compl.	1	
3	10390-91001-03	LABEL (EG-5500E) -F	1	
4	10390-91002-03	LABEL (EG-5500E) -R	1	
5	10011-00600-80	FLANGE BOLT	2	
6	10001-14061-60	BOLT and WASHER ASS'Y	3	
7	10352-57041-18	RUBBER MOUNT UNIT, generator side	2	
8	10352-57042-18	RUBBER MOUNT UNIT, engine side	4	
9	10002-38080-00	FLANGE NUT	10	
10	10390-54412-08	STOPPER PLATE	1	
11	10001-13064-00	BOLT and WASHER ASS'Y	1	
12	10389-54398-08	SPACER	1	
13	10002-17060-00	NUT	1	
14	10224-69004-01	FUEL TANK, compl.	1	
15	10389-59158-08	LABEL, operatain	1	
16	10390-99001-03	LABEL, danger	1	
18	10043-04300-15	FUEL TANK CAP, compl.	1	
19	10064-13600-10	FUEL FILTER	1	
20	10227-66001-03	PLUG COVER	1	
21	10064-80003-00	FUEL GAUGE, compl.	1	
22	10014-50500-40	SCREW, counter head	2	
23	10359-59988-08	FLANGE BOLT	4	
24	10352-54327-08	RUBBER WASHER	4	
25	10056-11700-10	HOSE CLAMP	2	
26	10085-11100-00	RUBBER PIPE (11.5 $\phi$ ×17.5 $\phi$ ×230mm)	1	
27	10390-54415-08	EARTH CORD	1	
28	10341-00508-00	SCREW	2	
29	10332-00050-08	SPRING WASHER	2	
30	10390-33001-01	BATTERY FRAME, compl.	1	
31	10001-14082-00	BOLT and WASHER ASS'Y	4	
32	10389-33005-11	BATTERY BASE	1	
33	10001-11063-50	BOLT and WASHER ASS'Y	4	
34	10002-17060-00	NUT	4	
35	10353-59921-08	BATTERY BOLT	2	
36	10385-54382-08	BATTERY RETAINER	1	
37	10385-54416-08	BATTERY SUPPORT	2	
38	10003-20060-00	SPRING WASHER	2	
39	10002-17060-00	NUT	2	
40	10389-54453-08	BATTERY CORD (-)	1	
41	10390-54455-08	BATTERY CORD (+)	1	
42	10390-54454-08	BATTERY CORD (+)	1	

When ordering parts : Always give the Model, Specification and Serial Number of Generator.

FIG.3 CONTROL BOX



### FIG.3 CONTROL BOX

Ref. No.	Parts Number	Description	Q'ty	Execution
* 1	10390-40003-00	CONTROL BOX ASS'Y Includes items 2 thru 36 and 48 thru 50	1	
1	10390-40003-01	CONTROL BOX	1	
* 2	10390-41003-00	CONTROL PANEL ASS'Y Includes items 3 thru 24	1	
2	10390-41003-01	CONTROL PANEL	1	
3	10390-45660-08	NO-FUSE BREAKER (22A×2)	1	
4	10359-45641-08	NO-FUSE BREAKER (30A)	1	
5	10320-75127-08	AC VOLTMETER (150V)	1	
6	10320-75173-08	PILOT LAMP	1	
7	10390-45750-08	AC RECEPTACLE (125V-20A, GFCI)	1	
8	10356-45711-08	AC RECEPTACLE (125V-20A, TWIST LOCK)	1	
9	10353-45724-08	AC RECEPTACLE (125V/250V-20A, TWIST LOCK)	1	
10	10355-45613-08	SWITCH, full power	1	
11	10352-45620-08	DC BREAKER	1	
12	10344-45615-08	SWITCH ASS'Y, idle control	1	
13	10363-45701-08	TERMINAL BOLT (Color: RED)	1	
14	10363-45700-08	TERMINAL BOLT (Color: BLACK)	1	
15	10004-35030-60	SCREW and WASHER ASS'Y	8	
16	10004-35041-00	SCREW and WASHER ASS'Y	2	
17	10356-59937-08	SCREW and WASHER ASS'Y	4	
18	10002-17040-00	NUT	2	
19	10356-49907-08	SCREW	1	
20	10353-49901-08	WING NUT	1	
21	10353-49902-08	NUT	1	
22	10332-00050-08	SPRING WASHER	2	
23	10353-49903-08	WASHER	1	
24	10066-00001-11	KEY SWITCH ASS'Y	1	
25	10390-47553-08	CONDENSER, compl. (28μF×2)	1	
26	10380-47531-08	CONDENSER BRACKET	4	
27	10004-35041-00	SCREW and WASHER ASS'Y	5	
28	10389-59989-08	SCREW and WASHER ASS'Y	1	
29	10389-59990-08	NUT	1	
30	10388-30603-08	IDLE CONTROL UNIT	1	
31	10353-45804-08	DIODE STACK ASS'Y	1	
32	10363-45803-08	DIODE STACK ASS'Y	1	
33	10004-36042-00	SCREW and WASHER ASS'Y	2	
34	10353-49904-08	TAPPING SCREW	8	
35	10374-47540-08	GROMMET	1	
36	10363-56000-08	CORD BUSH	1	
37	10053-30900-20	NUT, joint	1	

When ordering parts : Always give the Model, Specification and Serial Number of Generator.



FIG.3 CONTROL BOX

