



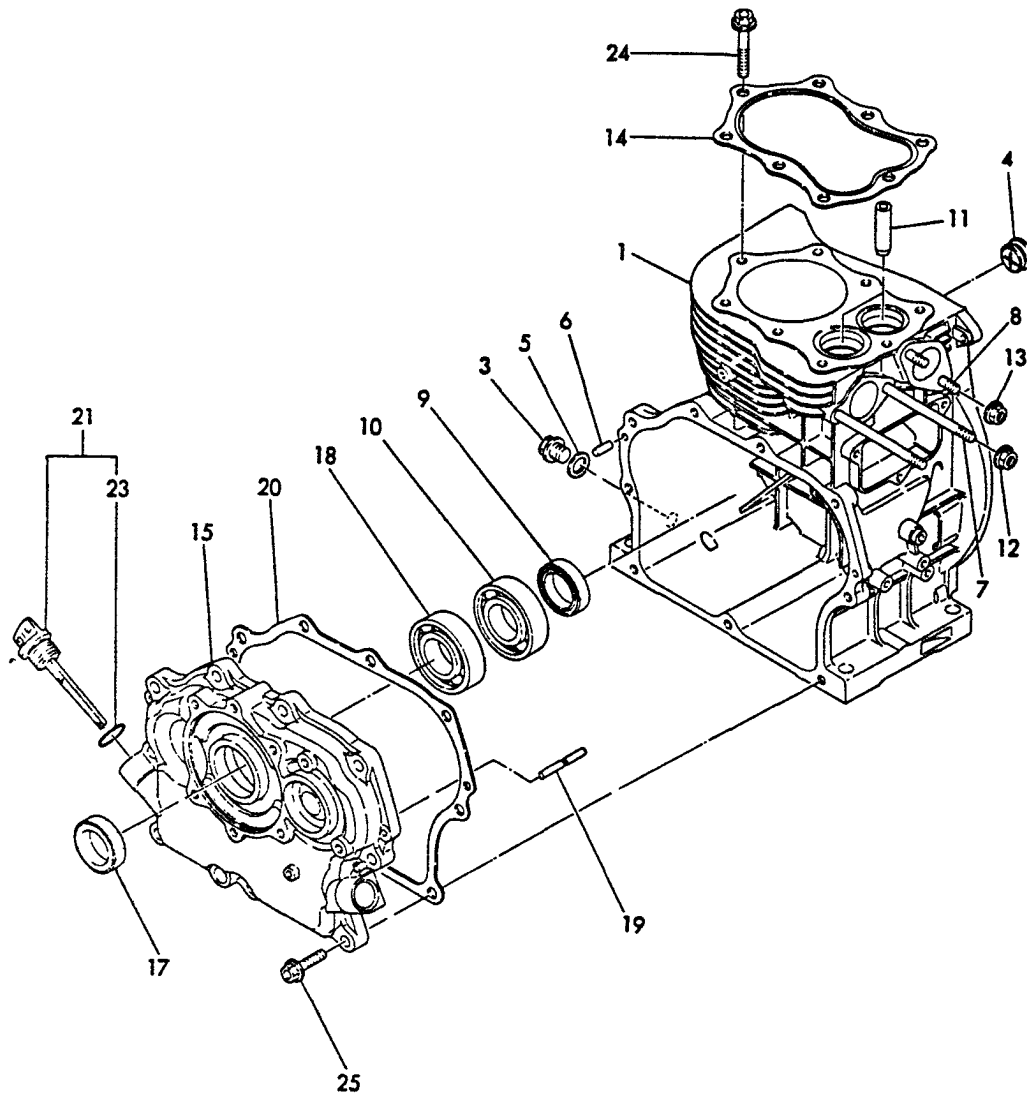
PARTS CATALOGUE

EG-4300



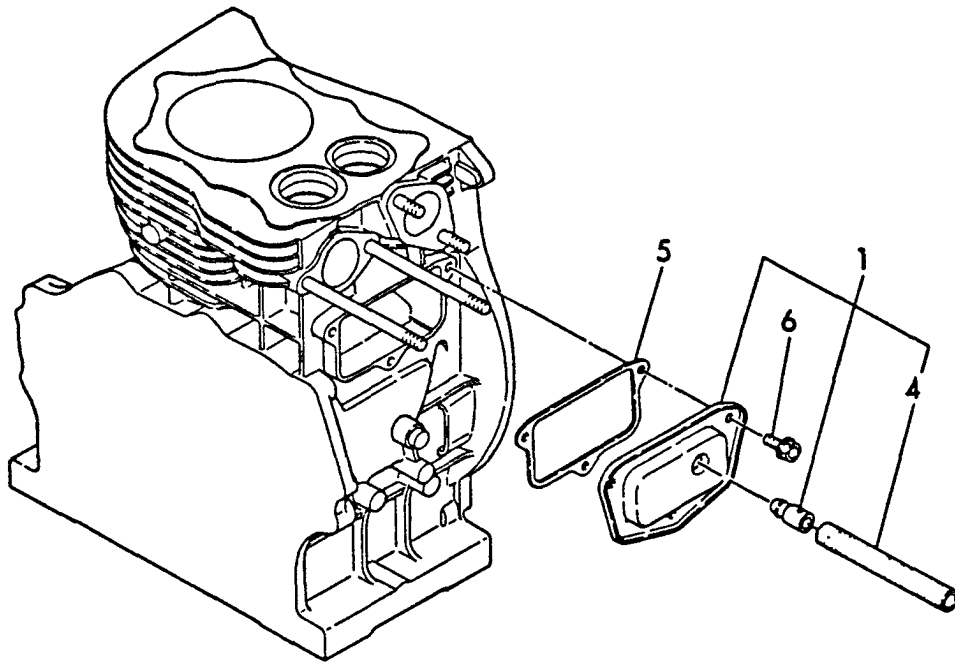
898 595-8066 0

1 CYLINDER BODY



REF. NO.	LEV.	O	PART NO.	DESCRIPTION	-----Q'TY-----					
					(A)	(B)	(C)	(D)	(E)	(F)
1	.		Y760940-01730	CYLINDER BODY ASSY	1					
3	..		Y160610-01690	PLUG, DRAIN	1					
4	..		Y160820-01950	PLUG	1					
5	..		Y104200-59170	GASKET 12	1					
6	..		Y22312-060160	PARALLEL PIN 6X16	2					
7	..		Y26216-080952	STUD M8X95	2					
8	..		Y26226-080182	STUD M8X18	2					
9	..		*REF. 8=9	OIL SEAL	1					
10	..		*REF. 8=10	BEARING 6206 C3	1					
11	..		*REF. 5=5	GUIDE, VALVE	2					
12	..		*REF. 6=10	NUT M8	2					
13	..		*REF. 6=21	NUT M8	2					
14	.		Y160910-01330	GASKET, HEAD	1					
15	.		Y760940-01500	COVER ASSY, SIDE	1					
17	..		*REF. 8=9	OIL SEAL	1					
18	..		*REF. 8=10	BEARING 6206 C3	1					
19	..		*REF. 14=1	SHAFT, GOVER	1					
20	.		Y160910-01410	GASKET, CRANKCASE	1					
21	.		Y160910-01740	CAP ASSY, OIL	1					
23	..		Y24311-000180	O-RING 1A P18	1					
24	.		Y160610-04180	BOLT M8X50	8					
25	.		Y26106-080302	BOLT M8X30	9					

2 BREATHER



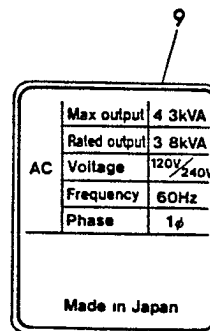
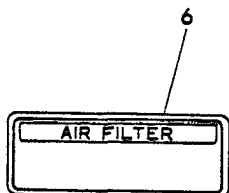
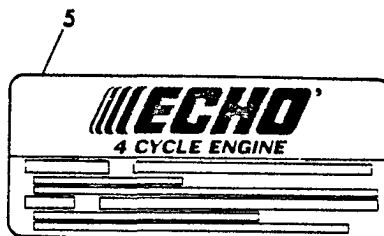
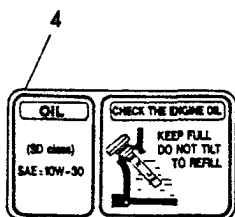
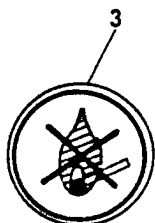
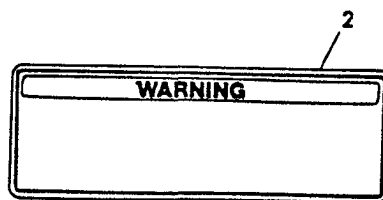
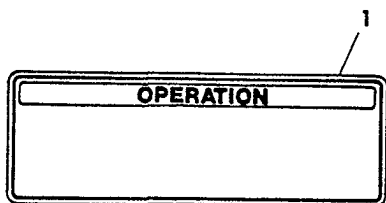
+-----+
 | 1B03 |
 | (1B01) |
 +-----+

(2) AIR BREATHER

(A)=EG4300 (D)=
 (B)= (E)=
 (C)= (F)=

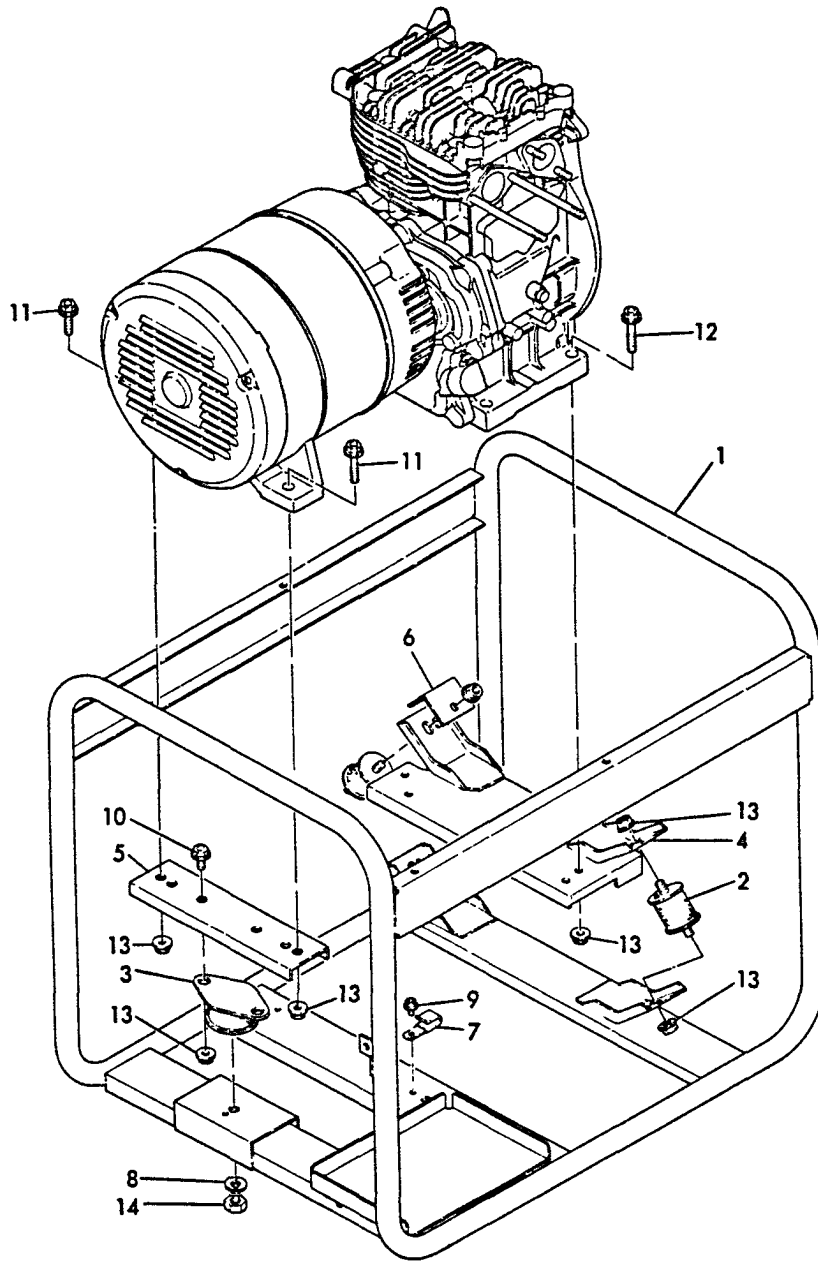
REF. NO.	LEV. 0	PART NO.	DESCRIPTION	-----Q'TY-----					
				(A)	(B)	(C)	(D)	(E)	(F)
1	.	Y 160910-03010	BREATHER ASSY	1					
4	..	Y 160810-03180	PIPE, BREATHER	1					
5	.	Y 160810-03070	GASKET, BREATHER	1					
6	.	Y 26476-060142	BOLT M6X14	3					

3 LABELS



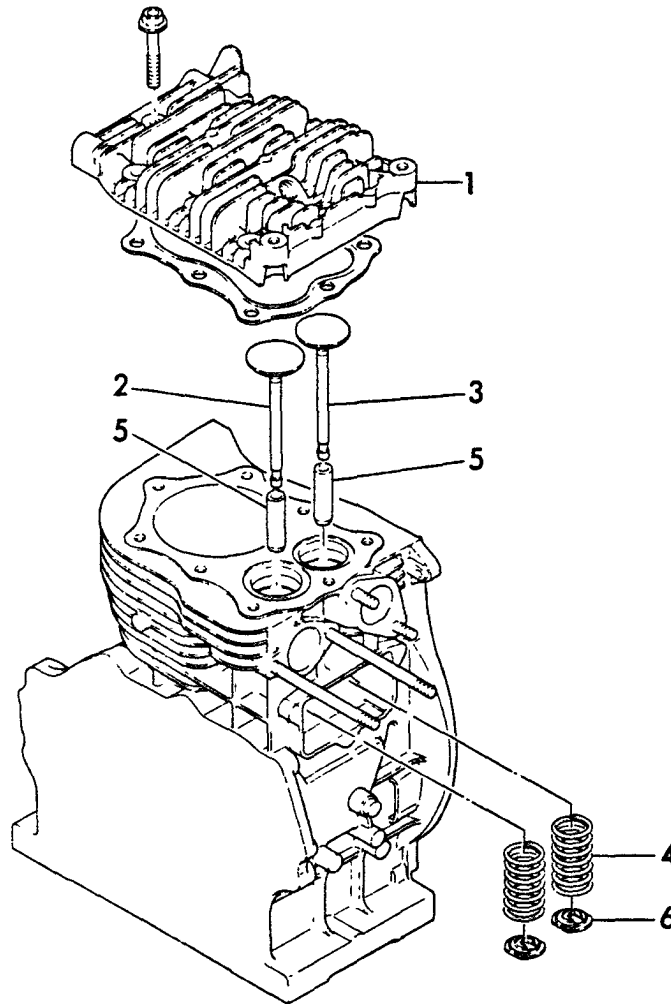
REF. NO.	LEV. 0	PART NO.	DESCRIPTION	-----Q'TY-----					
				(A)	(B)	(C)	(D)	(E)	(F)
1	.	Y 183621-07250	LABEL, OPERATION	1					
2	.	Y 183210-07260	LABEL, WARNING	1					
3	.	Y 183210-07270	LABEL, NON FIRE	1					
4	.	Y 183210-07290	LABEL, OIL	1					
5	.	Y 160671-07370	LABEL(ECHO)	1					
6	.	Y 183210-07370	LABEL, AIR CLEANER	1					
7	.	Y 183920-07140	LABEL(EG4300)	1					
8	.	Y 183210-07390	LABEL, EARTH	1					
9	.	Y 183920-07550	LABEL, GENERATOR	1					

4 FRAME



REF. NO.	LEV. 0	PART NO.	DESCRIPTION	-----Q'TY-----					
				(A)	(B)	(C)	(D)	(E)	(F)
1	.	Y 183920-08050	FRAME	1					
2	.	Y 183920-08210	DAMPER, FRONT	2					
3	.	Y 183920-08220	DAMPER, REAR	1					
4	.	Y 183920-08230	STAY, DAMPER	1					
5	.	Y 183720-08250	STAY, REAR DAMPER	1					
6	.	Y 183920-08260	COVER, DAMPER	1					
7	.	Y 160710-78710	CLAMP, CORD	2					
8	.	Y 22217-100000	SPRING WASHER 10	1					
9	.	Y 26106-060082	BOLT M6X8	2					
10	.	Y 26106-080202	BOLT M8X20	2					
11	.	Y 26106-080302	BOLT M8X30	2					
12	.	Y 26106-080382	BOLT M8X38	2					
13	.	Y 26366-080002	NUT M8	10					
14	.	Y 26717-100002	NUT M10	1					

5 CYLINDER HEAD



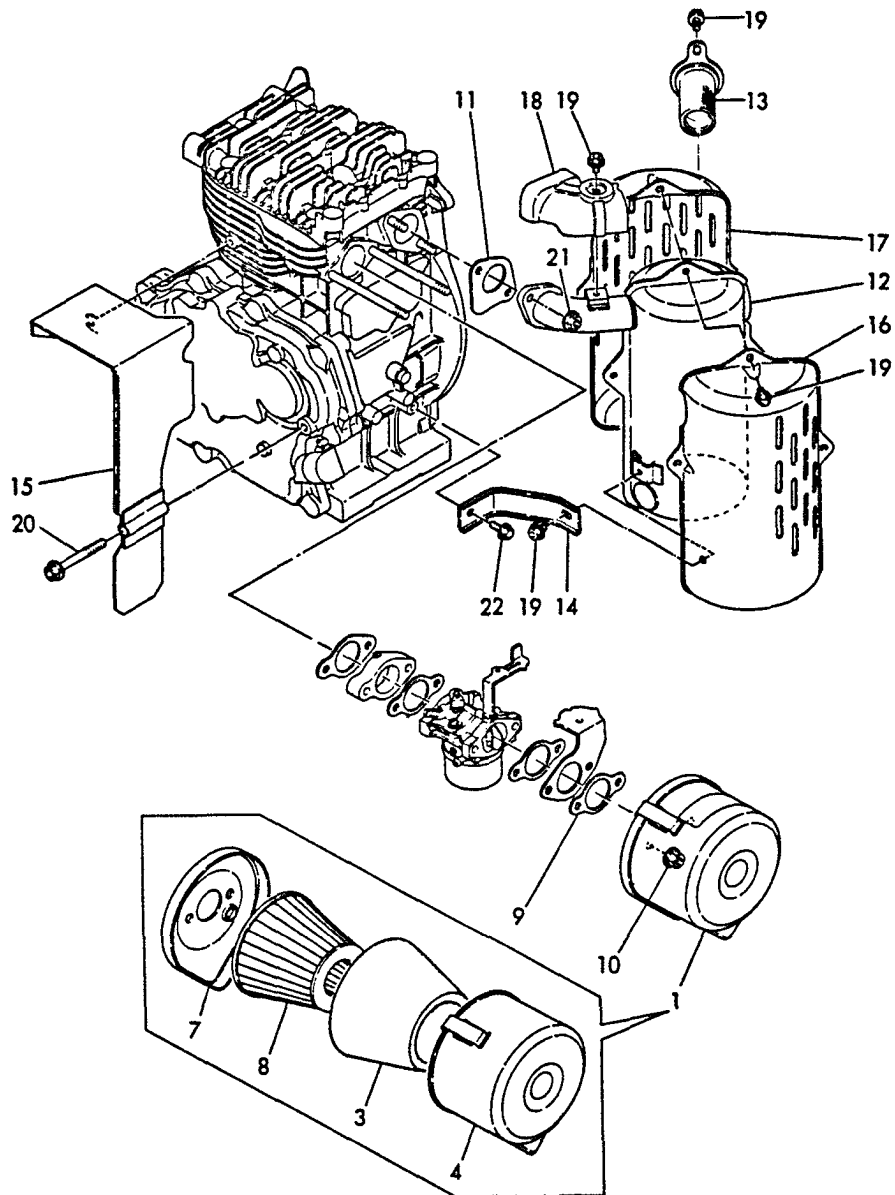
+-----+
 | 1B06 |
 | (1B01) |
 +-----+

(5) CYLINDER HEAD

(A)=EG4300 (D)=
 (B)= (E)=
 (C)= (F)=

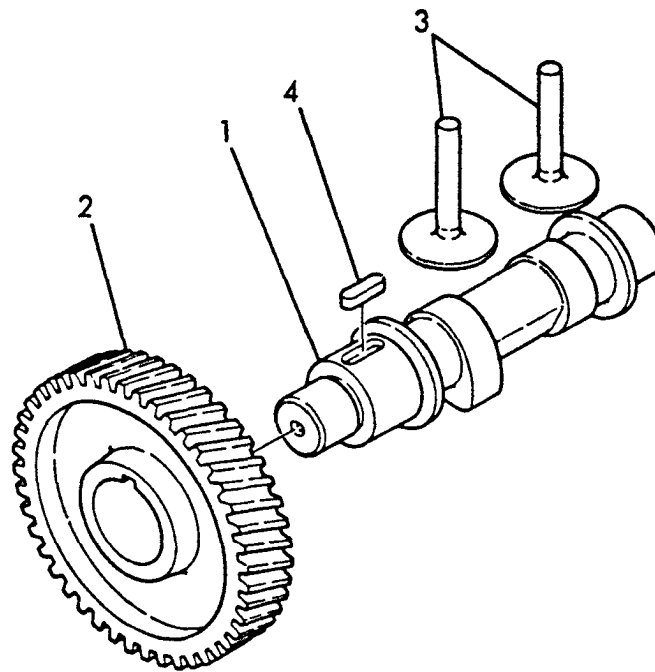
REF. NO.	LEV. 0	PART NO.	DESCRIPTION	-----Q'TY-----					
				(A)	(B)	(C)	(D)	(E)	(F)
1	.	Y 160910-11010	HEAD, CYLINDER	1					
2	.	Y 160910-11100	VALVE, INTAKE	1					
3	.	Y 160910-11110	VALVE, EXHAUST	1					
4	.	Y 160810-11120	SPRING, VALVE	2					
5	.	Y 160903-11160	GUIDE, VALVE	2					
6	.	Y 160810-11180	RETAINER	2					

6 AIR CLEANER & MUFFLER



REF. NO.	LEV.	O	PART NO.	DESCRIPTION	-----Q'TY-----					
					(A)	(B)	(C)	(D)	(E)	(F)
1	.	Y	760910-12560	AIR CLEANER ASSY	1					
3	..	Y	160280-12570	ELEMENT(1ST)	1					
4	..	Y	760910-12540	BODY ASSY	1					
7	..	Y	160910-12710	BACK PLATE	1					
8	..	Y	160820-12740	ELEMENT(2ND)	1					
9	.	Y	160910-56150	GASKET, CARBURETOR	1					
10	.	Y	26366-080002	NUT M8	2					
11	.	Y	160910-13200	GASKET, MUFFLER	1					
12	.	Y	160970-13560	MUFFLER	1					
13	.	Y	160870-13650	SPARK ARRESTER	1					
14	.	Y	160910-13730	STAY, MUFFLER	1					
15	.	Y	160970-13730	PLATE, GUIDE	1					
16	.	Y	160910-13800	COVER-A, MUFFLER	1					
17	.	Y	160970-13810	COVER-B, MUFFLER	1					
18	.	Y	160910-13820	COVER-C, MUFFLER	1					
19	.	Y	26106-060082	BOLT M6X8	6					
20	.	Y	26116-080602	BOLT M8X60	1					
21	.	Y	26366-080002	NUT M8	2					
22	.	Y	26476-060142	BOLT M6X14	1					

7 CAMSHAFT



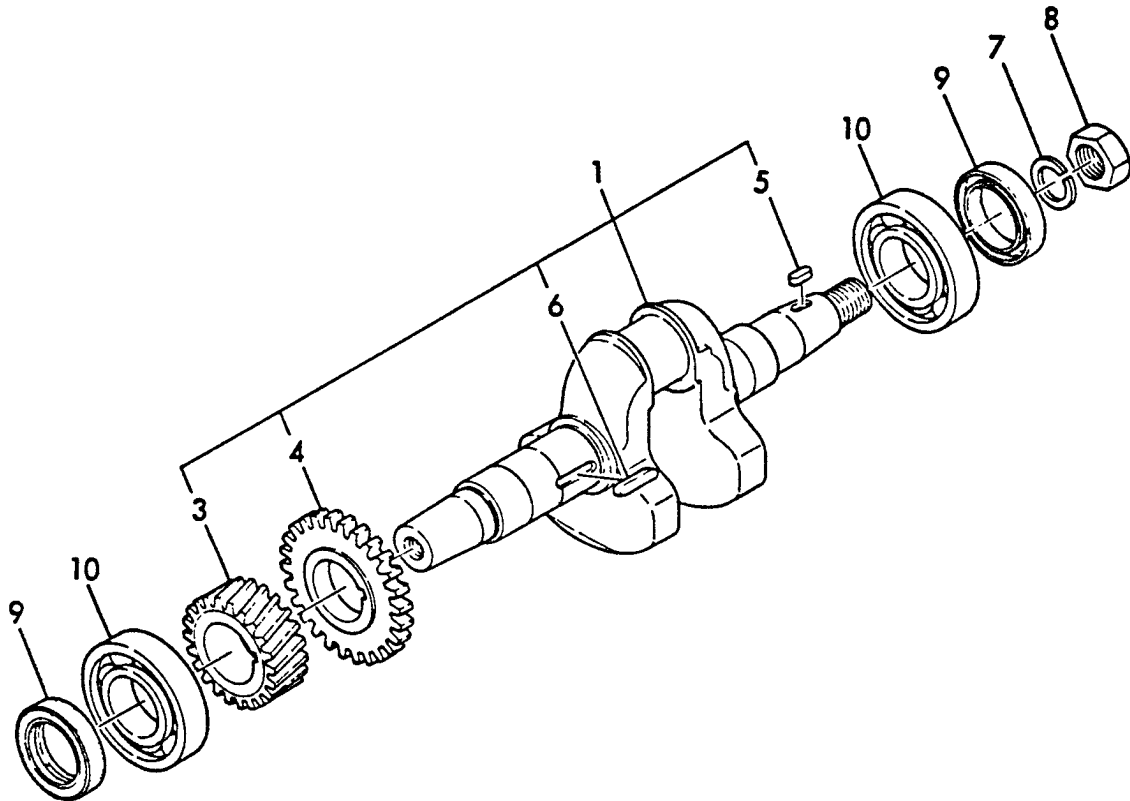
+-----+
 | 1B08 |
 | (1B01) |
 +-----+

(7) CAMSHAFT

(A)=EG4300 (D)=
 (B)= (E)=
 (C)= (F)=

REF. NO.	LEV. 0	PART NO.	DESCRIPTION	-----Q'TY-----					
				(A)	(B)	(C)	(D)	(E)	(F)
1	.	Y160940-14010	CAMSHAFT	1					
2	.	Y160910-14100	GEAR, CAMSHAFT	1					
3	.	Y160910-14200	TAPPET	2					
4	.	Y22512-050160	FEATHER KEY 5X16	1					

8 CRANKSHAFT & MAIN BEARING



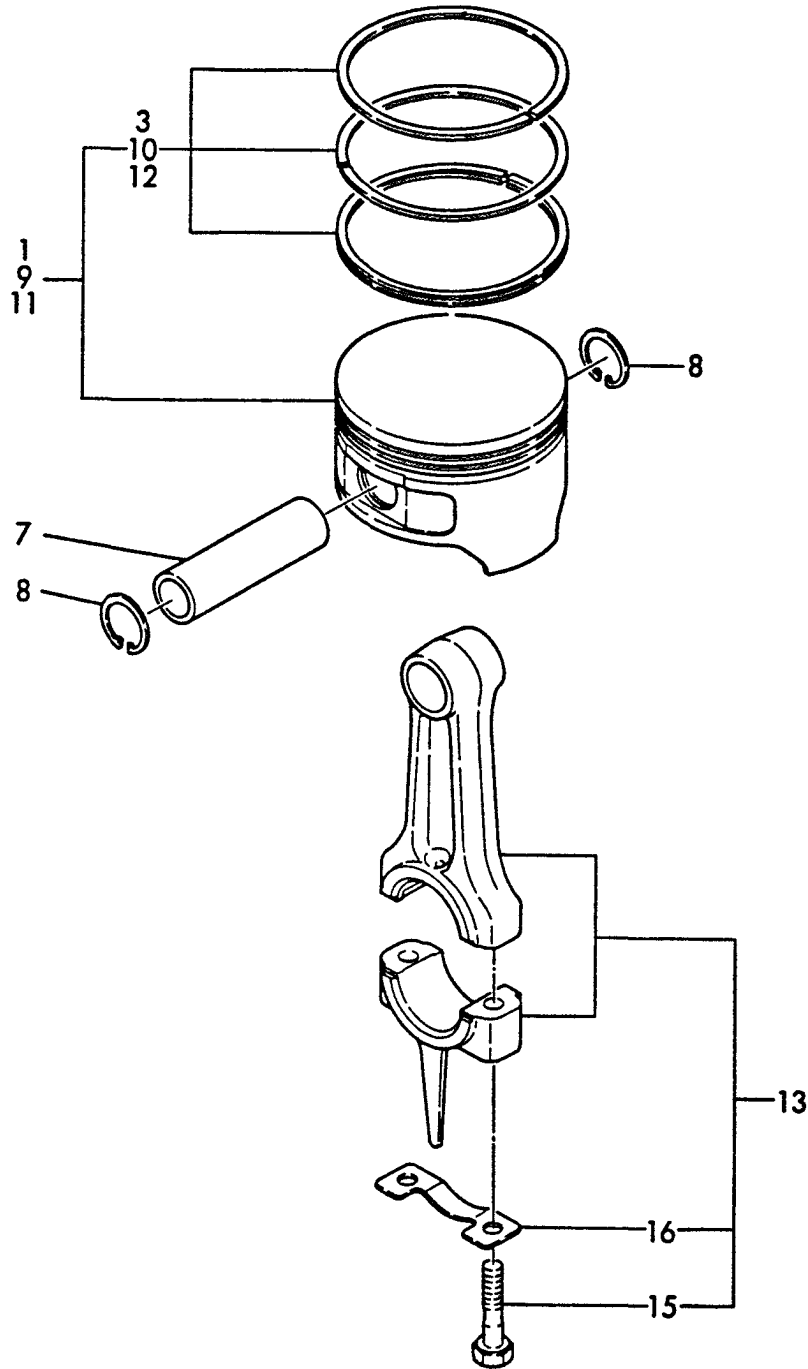
+-----+
 | 1B09 |
 | (1B01) |
 +-----+

(8) CRANKSHAFT & MAIN BEARING

(A)=EG4300 (D)=
 (B)= (E)=
 (C)= (F)=

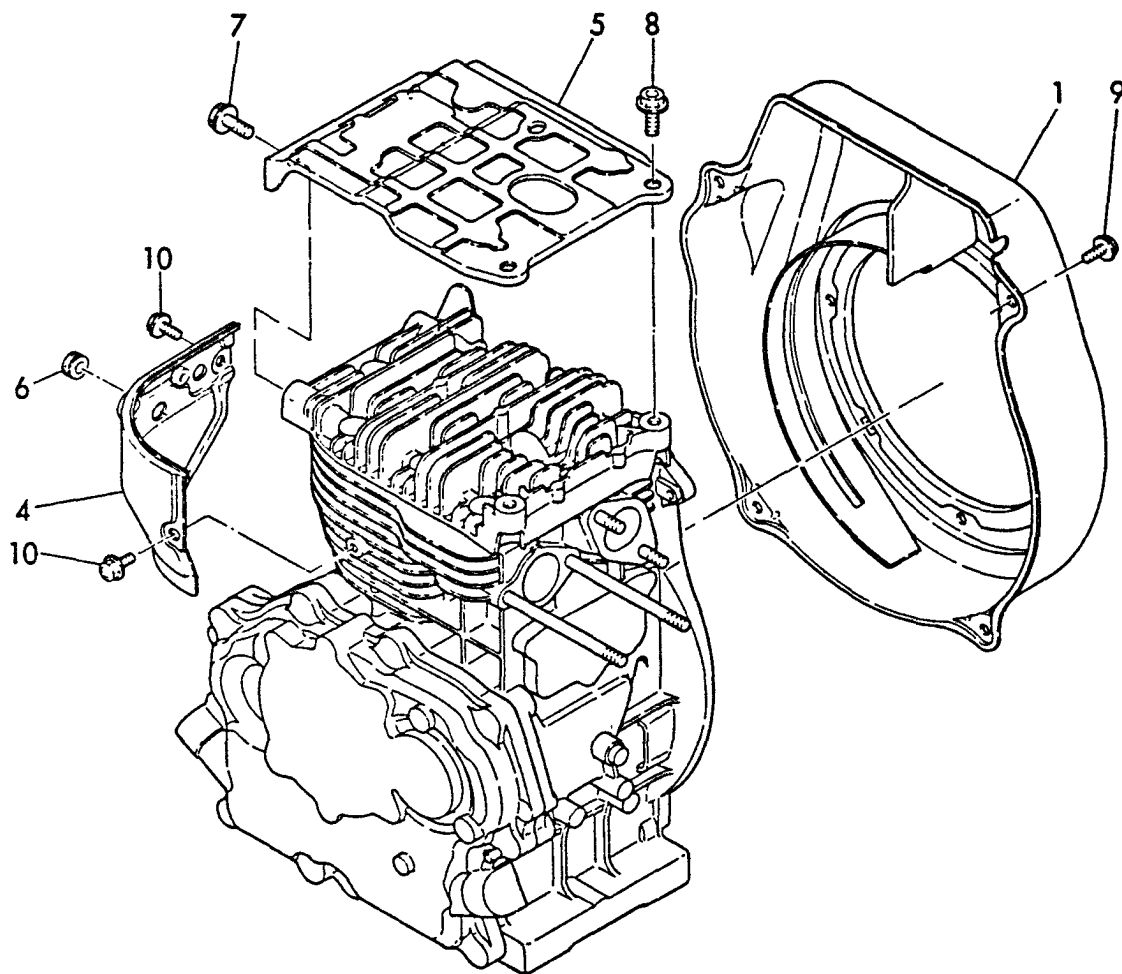
REF. NO.	LEV. 0	PART NO.	DESCRIPTION	-----Q'TY-----					
				(A)	(B)	(C)	(D)	(E)	(F)
1	.	Y 760970-21700	CRANKSHAFT ASSY	1					
3	..	Y 160910-21200	GEAR, CRANKSHAFT	1					
4	..	Y 160910-21220	GEAR, BALANCER	1					
5	..	Y 160610-21290	KEY 4X10	1					
6	..	Y 160810-21290	KEY 4X24	1					
7	.	Y 22217-160000	SPRING WASHER 10	1					
8	.	Y 26737-160002	NUT M16	1					
9	.	Y 160110-02220	OIL SEAL TC30458	2					
10	.	Y 24101-062060	BEARING 6206 C3	2					

9 PISTON & CONNECTING ROD



REF. NO.	LEV.	O	PART NO.	DESCRIPTION	-----Q'TY-----					
					(A)	(B)	(C)	(D)	(E)	(F)
1	.	Y	160910-22011	PISTON ASSY	1					
3	..	Y	760910-22500	PISTON RING ASSY	1					
7	.	Y	160910-22300	PIN, PISTON	1					
8	.	Y	22252-000190	CIRCLIP 19	2					
9	.	Y	160910-22470	PISTON ASY O.S.=0.25	1					
10	..	Y	760910-22540	RING ASSY. O.S.=0.25	1					
11	.	Y	160910-22480	PISTON ASSY O.S.=0.5	1					
12	..	Y	760910-22550	RING ASSY O.S.=0.5	1					
13	.	Y	760910-23100	ROD ASSY, CONNECTING	1					
15	..	Y	160810-23200	BOLT, ROD	2					
16	..	Y	160910-23210	WASHER, BOLT	1					

10 COOLING FAN CASE



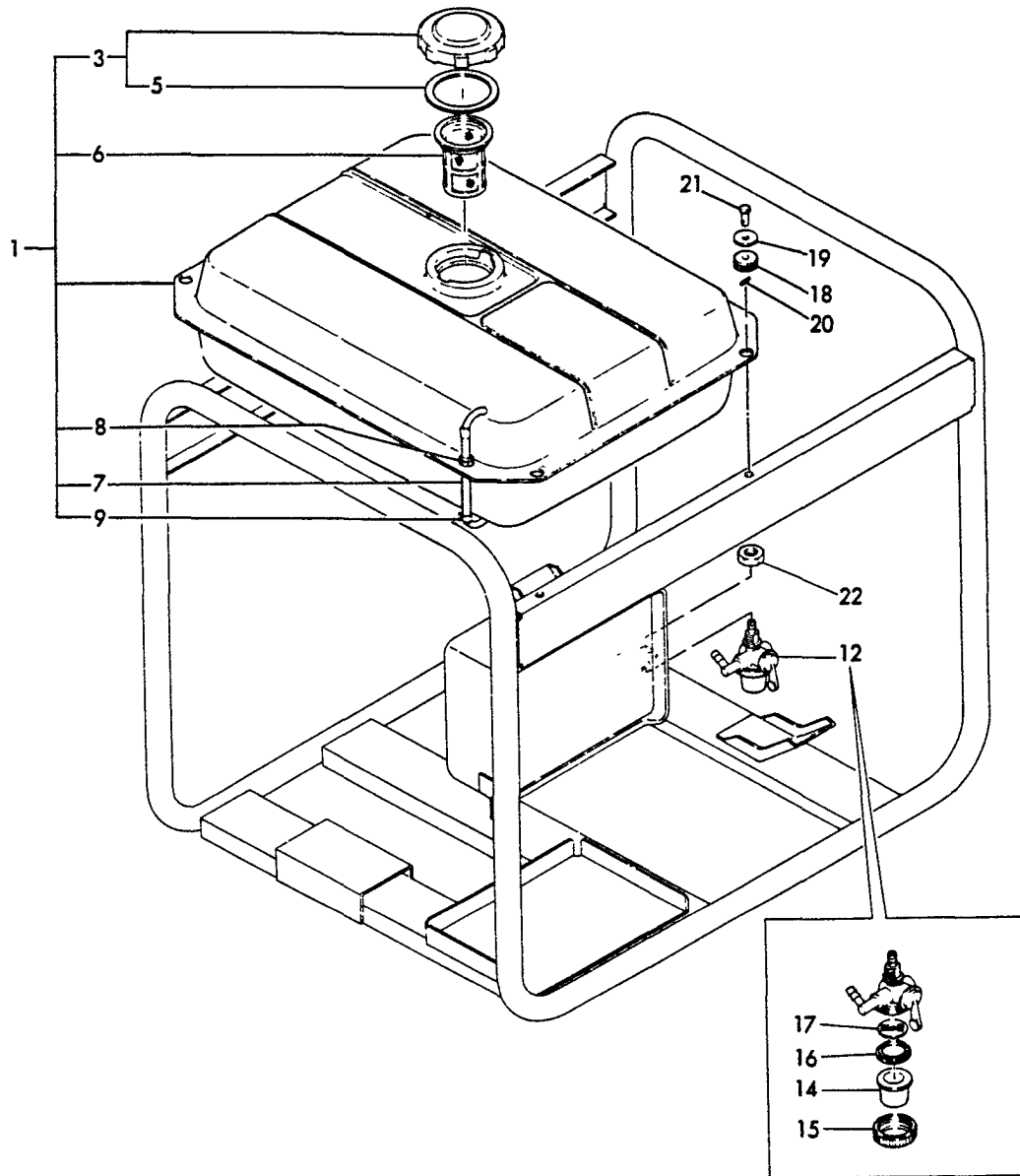
+-----+
 | 1B11 |
 | (1B01) |
 +-----+

(10) COOLING FAN CASE

(A)=EG4300 (D)=
 (B)= (E)=
 (C)= (F)=

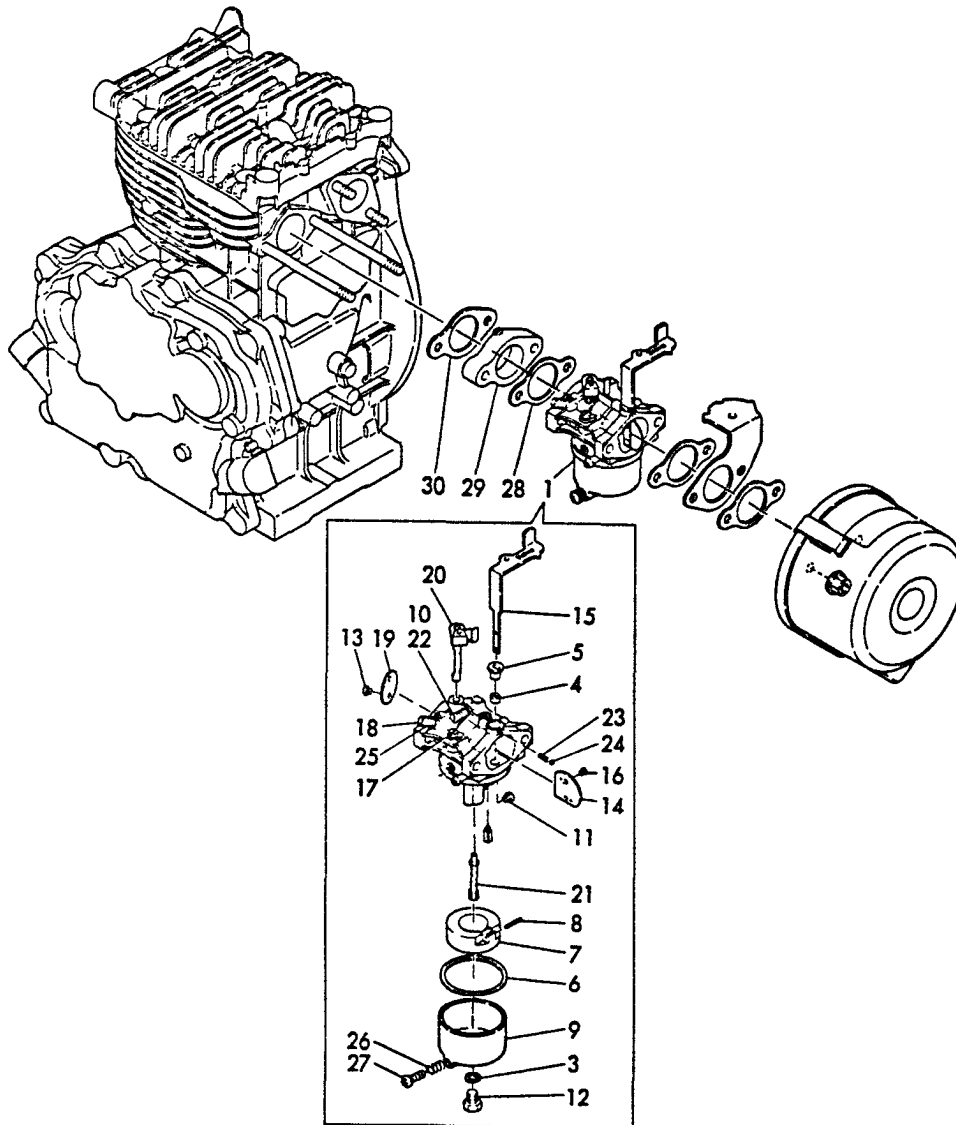
REF. NO.	LEV. 0	PART NO.	DESCRIPTION	-----Q'TY-----					
				(A)	(B)	(C)	(D)	(E)	(F)
1	.	Y 783920-45600	CASE ASSY, FAN	1					
4	.	Y 160910-45201	COVER, CYLINDER	1					
5	.	Y 160810-45250	COVER, HEAD	1					
6	.	Y 183720-55190	GROMMET 9	1					
7	.	Y 26106-080142	BOLT M6X14	2					
8	.	Y 26106-080202	BOLT M8X20	2					
9	.	Y 26476-060142	BOLT M6X14	4					
10	.	Y 26476-060142	BOLT M6X14	2					

11 FUEL TANK



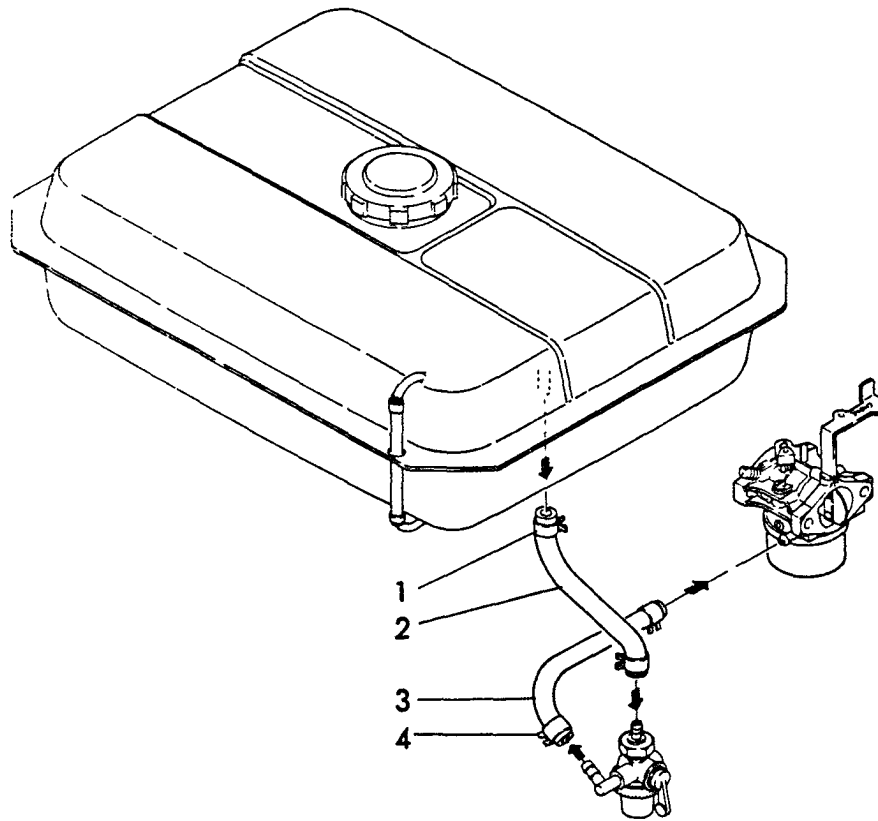
REF. NO.	LEV. 0	PART NO.	DESCRIPTION	-----Q'TY-----					
				(A)	(B)	(C)	(D)	(E)	(F)
1	.	Y 783920-55720	FUEL TANK ASSY	1					
3	..	Y 160710-55060	CAP ASSY, FUEL TANK	1					
5	...	Y 160393-55050	GASKET	1					
6	..	Y 160710-55100	STRAINER, FUEL	1					
7	..	Y 160710-55150	GAUGE, FUEL-LEVEL	1					
8	..	Y 183720-55190	GROMMET 9	1					
9	..	Y 124722-59050	CLIP, HOSE	1					
12	.	Y 160870-55301	COCK ASSY, FUEL	1					
14	..	Y 160710-55390	BOWL, STRAINER	1					
15	..	Y 160710-55360	RETAINER	1					
16	..	Y 160710-55370	GASKET	1					
17	..	Y 160710-55380	STRAINER	1					
18	.	Y 183720-55210	GROMMET	4					
19	.	Y 160120-76940	WASHER	4					
20	.	Y 22360-060000	SNAP PIN 6	4					
21	.	Y 22487-060140	PIN, FLAT HEAT 6X14	4					
22	.	Y 26777-120002	LOCK NUT M12	1					

12 CARBURETOR



REF. NO.	LEV.	O	PART NO.	DESCRIPTION	-----Q'TY-----					
					(A)	(B)	(C)	(D)	(E)	(F)
1	.	Y	160970-56010	CARBURETOR ASSY	1					
3	..	Y	160910-56550	WASHER	1					
4	..	Y	160810-56580	RING, CHOKE SHAFT	1					
5	..	Y	160810-56590	RING, CHOKE LEVER	1					
6	..	Y	160210-56610	WASHER	1					
7	..	Y	160810-56620	FLOAT	1					
8	..	Y	160610-56631	PIN	1					
9	..	Y	160810-56640	BODY	1					
10	..	Y	181230-56380	SPRING	1					
11	..	Y	160910-56650	JET, MAIN	1					
12	..	Y	160910-56660	BOLT	1					
13	..	Y	160810-56670	SCREW	2					
14	..	Y	160910-56680	VALVE, CHOKE	1					
15	..	Y	160970-56690	LEVER, CHOKE	1					
16	..	Y	160710-56710	SCREW	2					
17	..	Y	160910-56740	JET, PILOT	1					
18	..	Y	160910-56750	PILOT SCREW	1					
19	..	Y	160910-56760	VALVE, THROTTLE	1					
20	..	Y	160970-56770	SHAFT, THROTTLE	1					
21	..	Y	160910-56800	NOZZLE, MAIN	1					
22	..	Y	160910-56850	SCREW	1					
23	..	Y	160310-56980	SPRING, CHOKE	1					
24	..	Y	160310-56990	STEEL BALL	1					
25	..	Y	181230-56380	SPRING	1					
26	..	Y	181230-56380	SPRING	1					
27	..	Y	160610-56900	SCREW	1					
28	.	Y	160910-56150	GASKET, CARBURETOR	1					
29	.	Y	160910-56160	INSULATOR	1					
30	.	Y	160910-56170	GASKET, INSULATOR	1					

13 FUEL PIPE



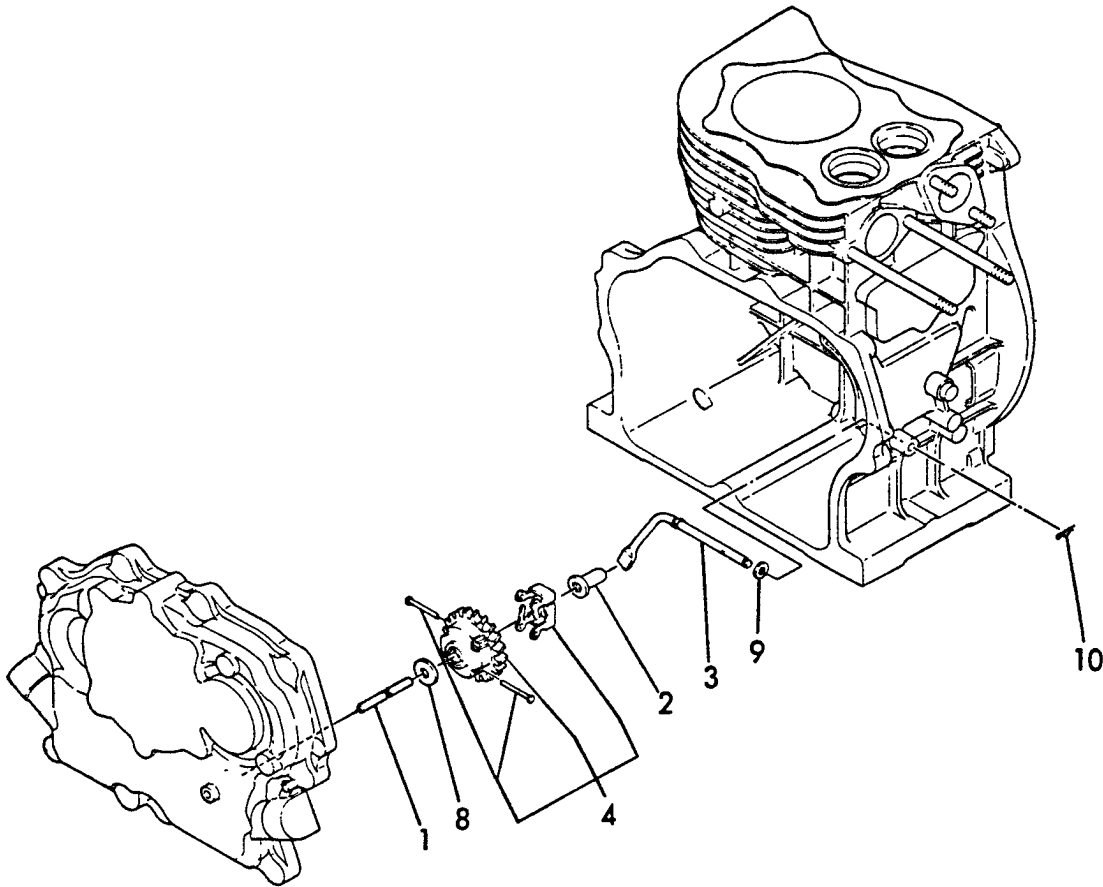
+-----+
 | 1B14 |
 | (1B01) |
 +-----+

(13) FUEL PIPE

(A)=EG4300 (D)=
 (B)= (E)=
 (C)= (F)=

REF. NO.	LEV. 0	PART NO.	DESCRIPTION	-----Q'TY-----					
				(A)	(B)	(C)	(D)	(E)	(F)
1	.	Y 106990-44660	CLIP, HOSE	2					
2	.	Y 160840-59350	PIPE(A), FUEL	1					
3	.	Y 183720-59610	PIPE, FUEL	1					
4	.	Y 124060-77680	CLAMP	2					

14 GOVERNOR



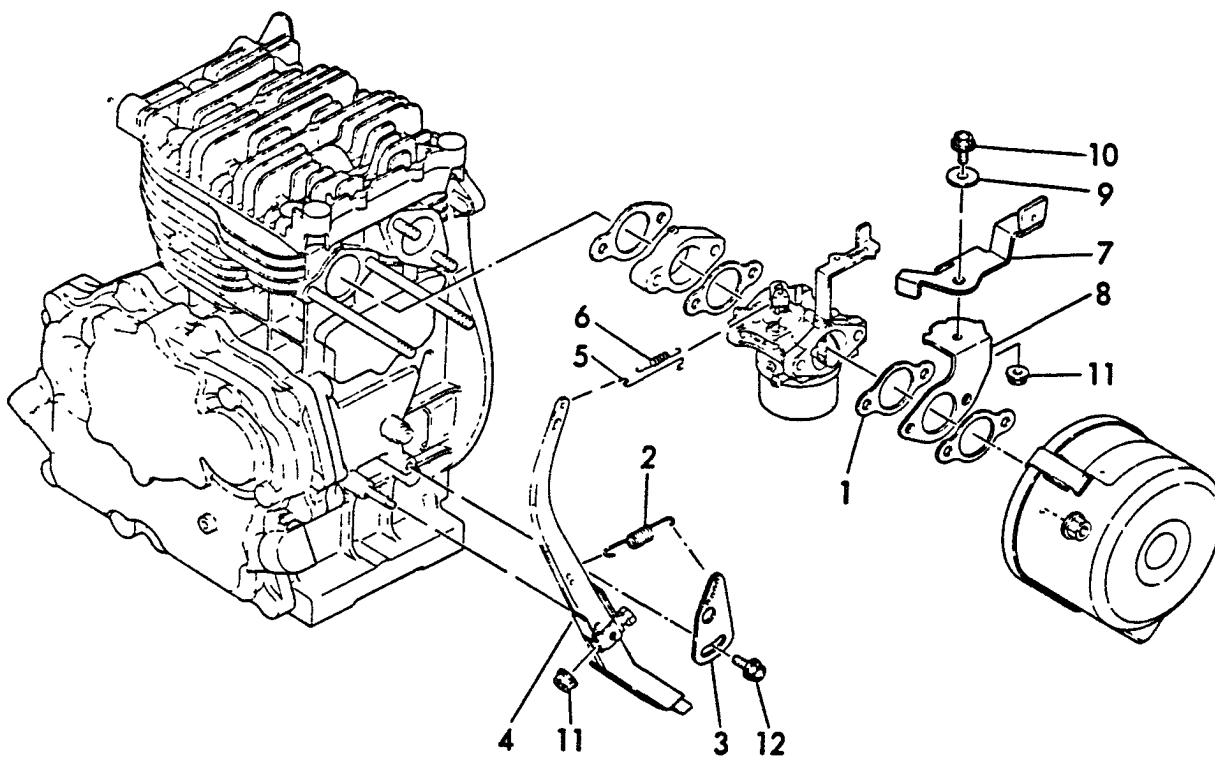
+-----+
 | 1B15 |
 | (1B01) |
 +-----+

(14) GOVERNOR

(A)=EG4300 (D)=
 (B)= (E)=
 (C)= (F)=

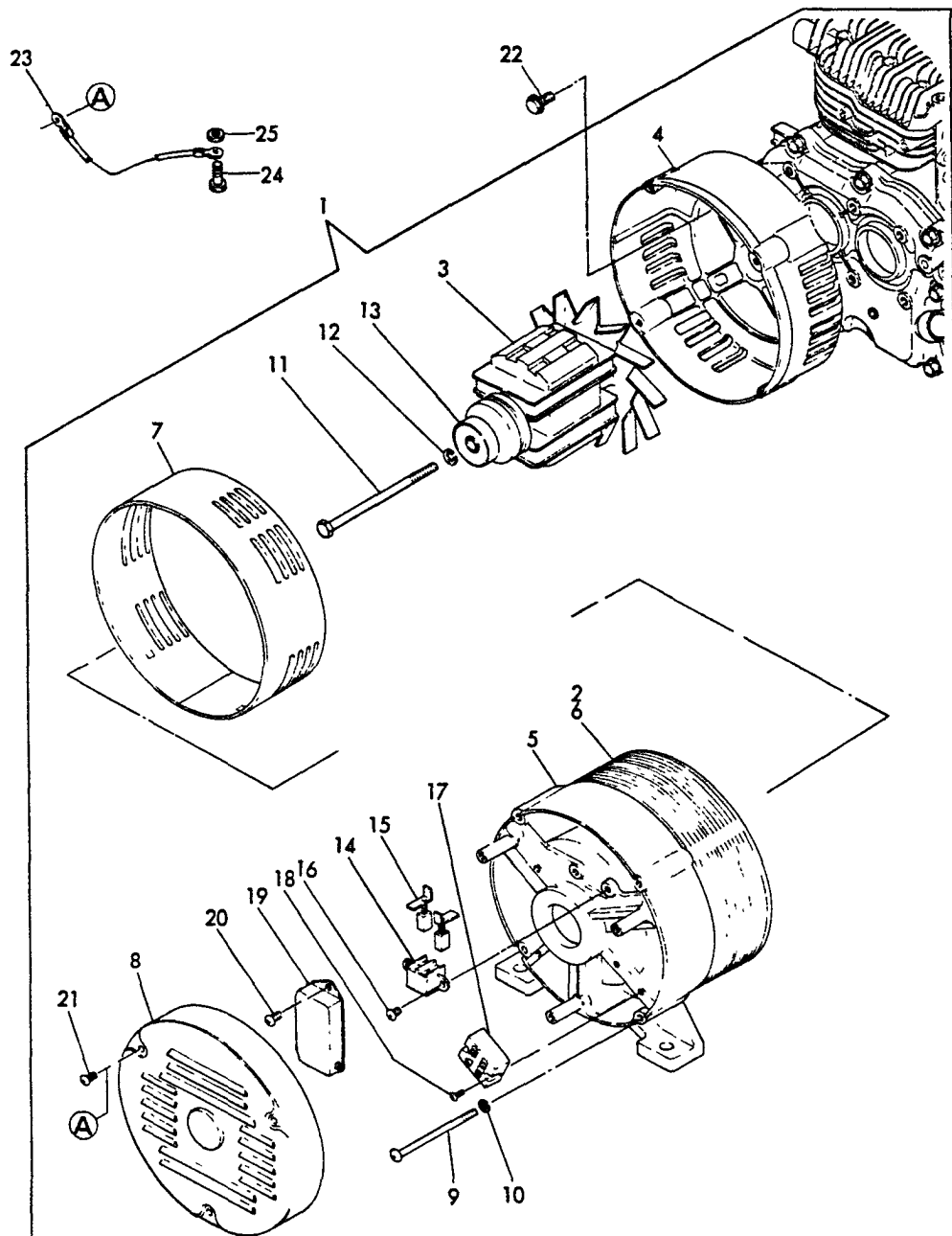
REF. NO.	LEV. 0	PART NO.	DESCRIPTION	-----Q'TY-----					
				(A)	(B)	(C)	(D)	(E)	(F)
1	.	Y160610-61100	SHAFT, GOVERNOR	1					
2	.	Y160610-61300	SPINDLE, GOVERNOR	1					
3	.	Y160910-61310	YOKE, GOV. LEVER	1					
4	.	Y160610-61600	GEAR ASSY, GOVERNOR	1					
8	.	Y160120-76940	WASHER	1					
9	.	Y22137-060000	WASHER 6	1					
10	.	Y22360-060000	PIN, SNAP 6	1					

15 CONTROL DEVICE



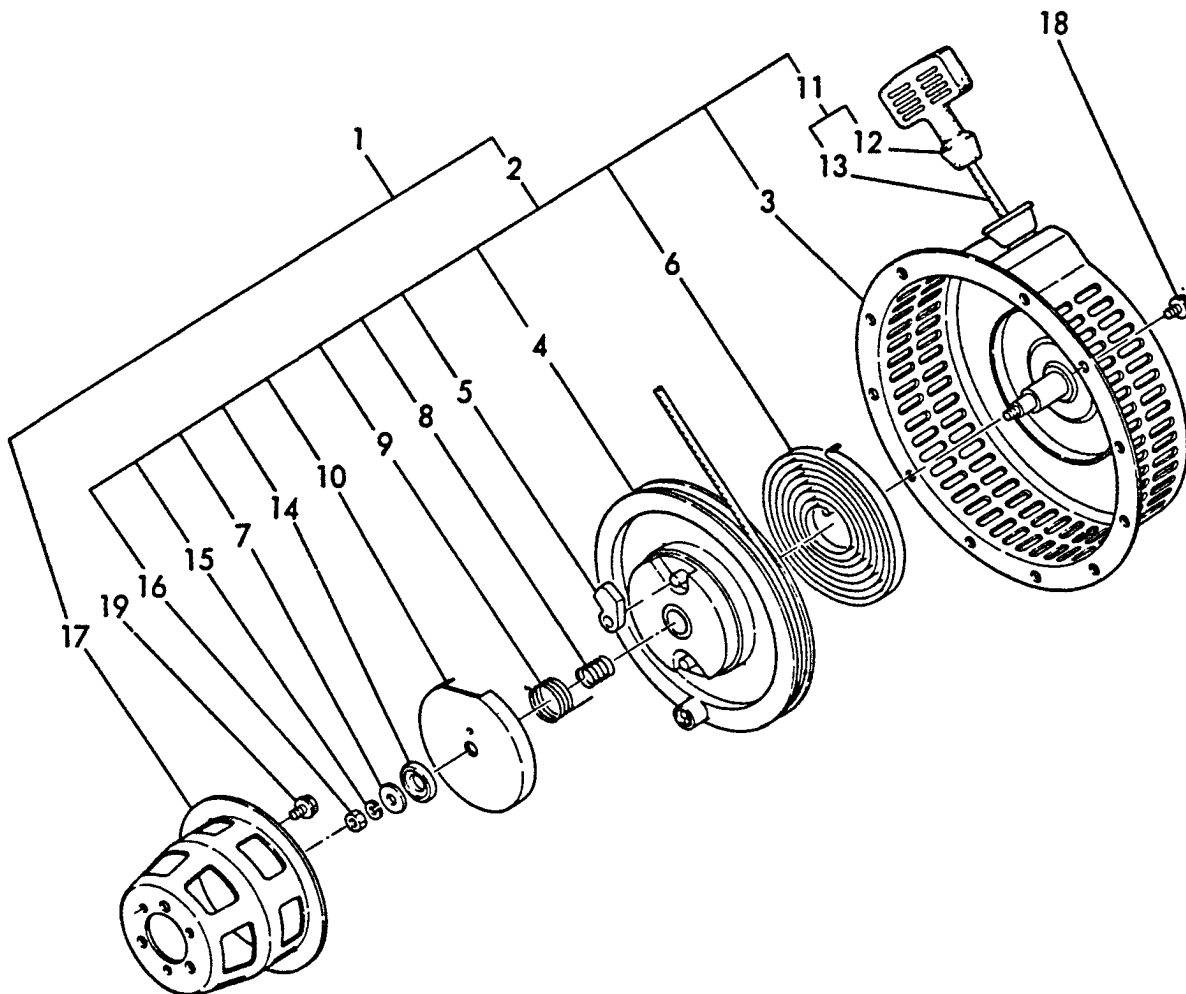
REF. NO.	LEV. O	PART NO.	DESCRIPTION	-----Q'TY-----					
				(A)	(B)	(C)	(D)	(E)	(F)
1	.	Y160910-56150	GASKET, CARBURETOR	1					
2	.	Y160970-66010	SPRING, REGULATOR	1					
3	.	Y160970-66120	HANDLE, REGULATOR	1					
4	.	Y160910-66161	LEVER, GOVERNOR	1					
5	.	Y160910-66200	LINK, THROTTLE	1					
6	.	Y160910-66320	SPRING, TENSION	1					
7	.	Y160970-66300	LEVER ASSY	1					
8	.	Y160970-66331	BRACKET, LEVER	1					
9	.	Y160670-66350	COLLAR	1					
10	.	Y26106-060122	BOLT M6X12	1					
11	.	Y26366-060002	NUT M6	2					
12	.	Y26476-060142	BOLT M6X14	1					

16 GENERATOR



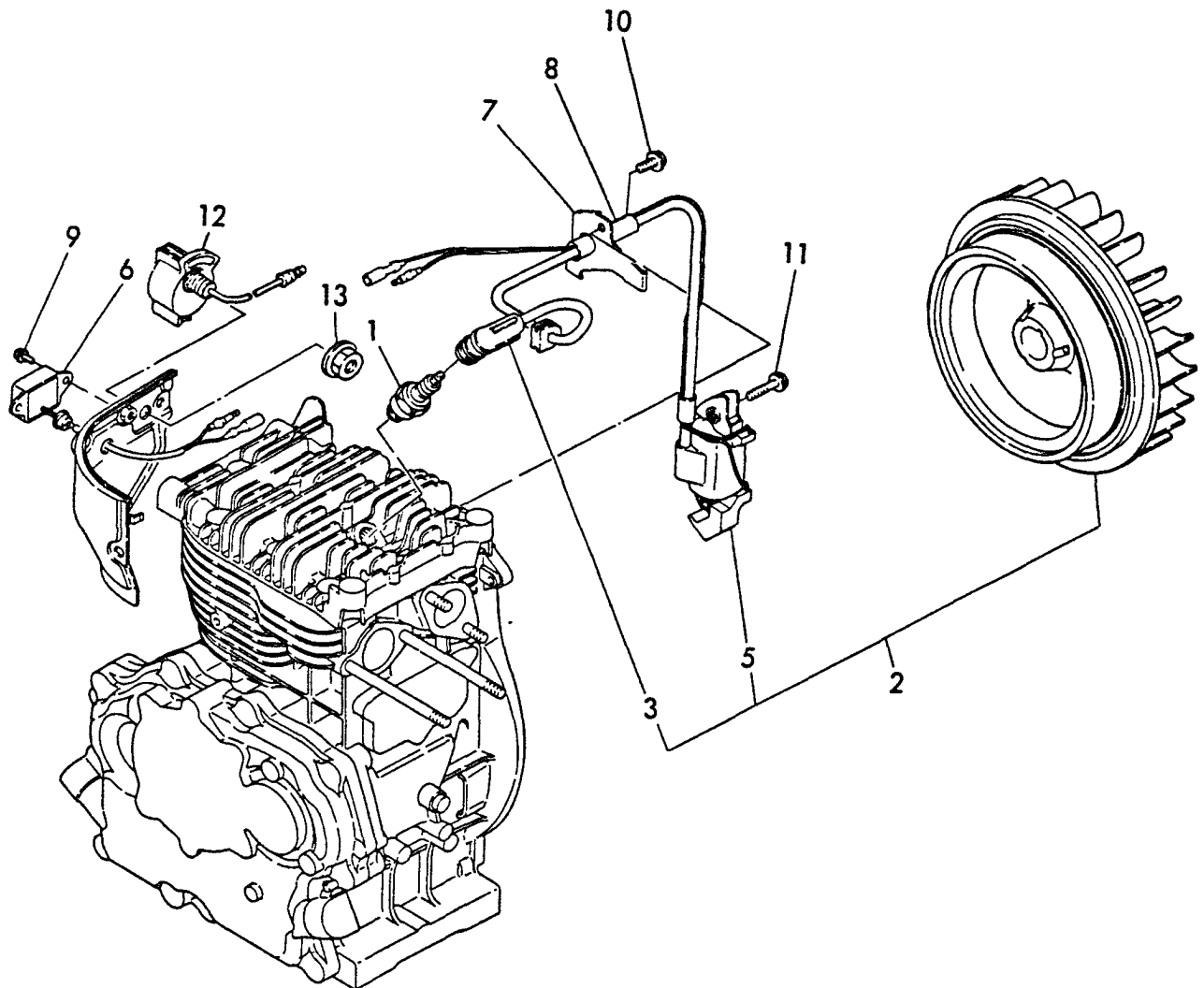
REF. NO.	LEV. 0	PART NO.	DESCRIPTION	-----Q'TY-----					
				(A)	(B)	(C)	(D)	(E)	(F)
1	.	Y 183920-74110	GENERATOR 3.8KVA	1					
2	..	Y 183920-74220	STATOR ASSY	1					
3	..	Y 183920-74350	ROTOR ASSY	1					
4	..	Y 183820-74150	COVER, FRONT	1					
5	..	Y 183820-74260	COVER, REAR	1					
6	..	Y 183920-74300	STATOR	1					
7	..	Y 183920-74090	BAND	1					
8	..	Y 183820-74450	COVER	1					
9	..	Y 183860-74410	BOLT, THROUGH	4					
10	..	Y 22217-060000	SPRING WASHER	4					
11	..	Y 183920-74430	BOLT	1					
12	..	Y 22217-100000	SPRING WASHER	1					
13	..	Y 183820-74360	BEARING	1					
14	..	Y 183820-74240	HOLDER, BRUSH	1					
15	..	Y 183820-74220	BRUSH	2					
16	..	Y 183620-74310	SCREW M4X10	2					
17	..	Y 183820-74270	TERMINAL	1					
18	..	Y 183820-74300	SCREW M5X14	2					
19	..	Y 183621-74170	A.V.R.	1					
20	..	Y 183820-74300	SCREW M5X14	2					
21	..	Y 183620-74310	SCREW M5X10	3					
22	.	Y 26106-080202	BOLT M8X20	4					
23	.	Y 183621-74450	WIRE, EARTH	1					
24	..	Y 26113-060162	BOLT 6X 16	1					
25	..	Y 26753-060002	NUT 6	1					

17 STARTING DEVICE



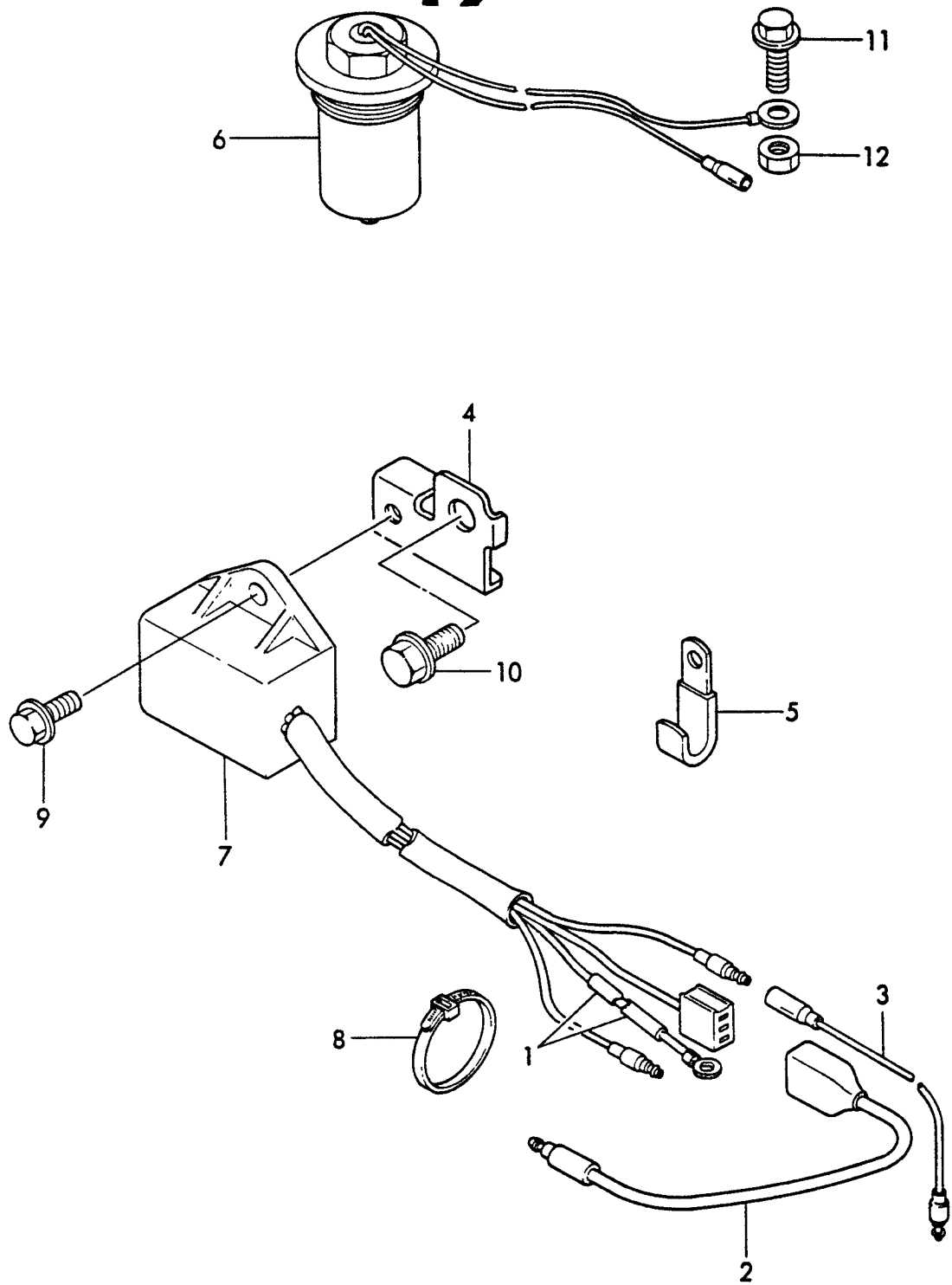
REF. NO.	LEV. 0	PART NO.	DESCRIPTION	-----Q'TY-----					
				(A)	(B)	(C)	(D)	(E)	(F)
1	.	Y160940-76050	STARTER ASSY, RECOIL	1					
2	..	Y160940-76250	RECOIL ASSY	1					
3	...	Y160940-76510	CASE, STATER	1					
4	...	Y160910-76520	REEL	1					
5	...	Y160910-76530	RATCHET	2					
6	...	Y160910-76540	SPRING, SPIRAL	1					
7	...	Y160910-76550	WASHER, THRUST	1					
8	...	Y160910-76560	SPRING, FRICTION	1					
9	...	Y160940-76570	SPRING, RETURN	1					
10	...	Y160910-76580	PLATE, FRICTION	1					
11	...	Y160910-76610	ROPE ASSY	1					
12	Y160910-76620	KNOB, STARTER	1					
13	Y160910-76630	ROPE, STARTER	1					
14	...	Y160910-76650	WASHER, THRUST	1					
15	...	Y22217-060000	SPRING WASHER 6	1					
16	...	Y26717-060002	NUT M6	1					
17	..	Y160910-76590	PULLEY, STARTER	1					
18	.	Y26106-060082	BOLT M6X88	4					
19	.	Y26106-060122	BOLT M6X12	3					

18 FLYWHEEL MAGNETO & STOP SWITCH



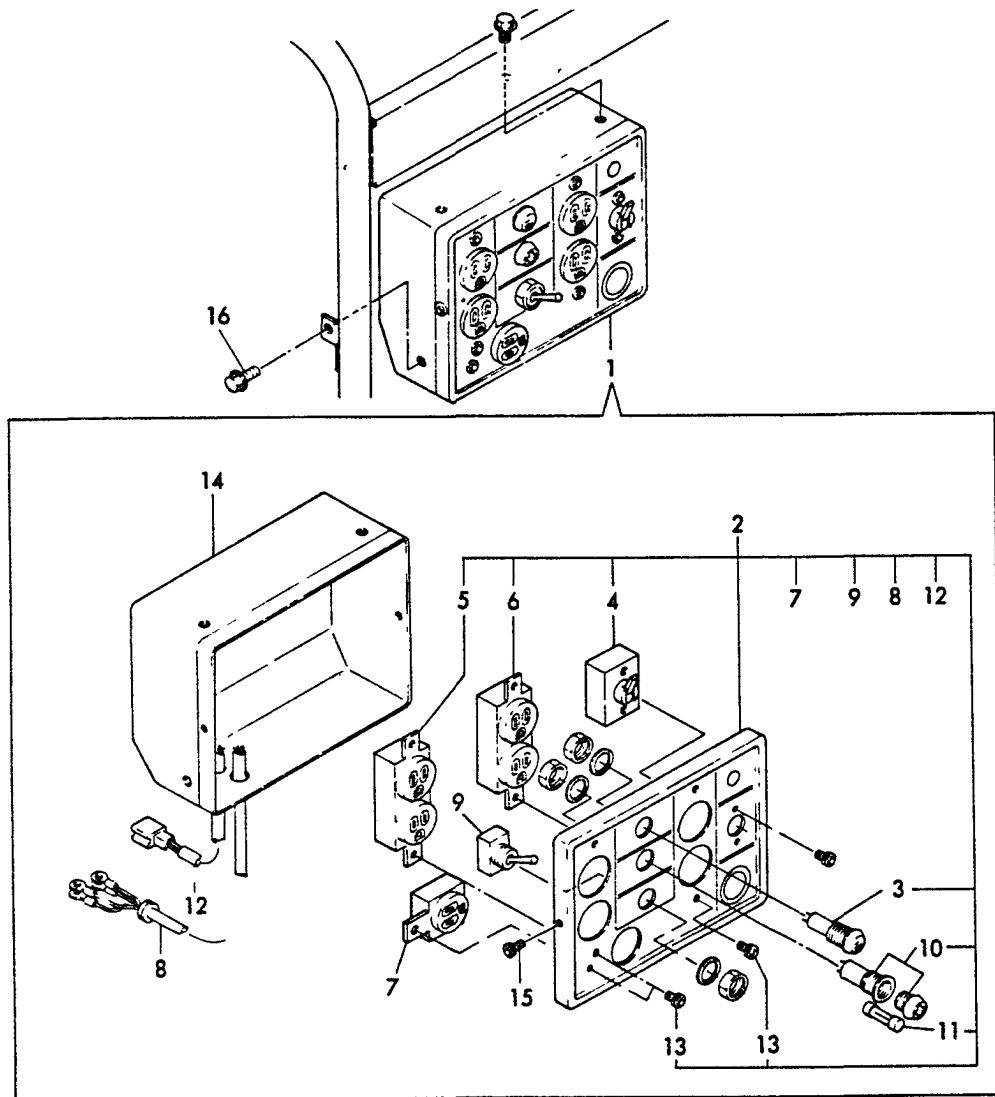
REF. NO.	LEV. 0	PART NO.	DESCRIPTION	-----Q'TY-----					
				(A)	(B)	(C)	(D)	(E)	(F)
1	.	Y 160232-78010	SPARK PLUG	1					
2	.	Y 160940-78060	FLYWHEEL MAG. ASSY	1					
3	..	Y 160343-78040	CAP, PLUG	1					
5	..	Y 160840-78510	COIL, IGNITION	1					
6	.	Y 160810-78650	UNIT, TRANSISTOR	1					
7	.	Y 160910-78790	CLAMP	1					
8	.	Y 160910-78810	TUBE	1					
9	.	Y 26022-050102	SCREW M5X10	2					
10	.	Y 26476-060142	BOLT M6X14	1					
11	.	Y 26476-060252	BOLT M6X25	2					
12	.	Y 160611-77250	STOP SWITCH	1					
13	.	Y 26366-080002	NUT 8	1					

19 OIL SENSOR



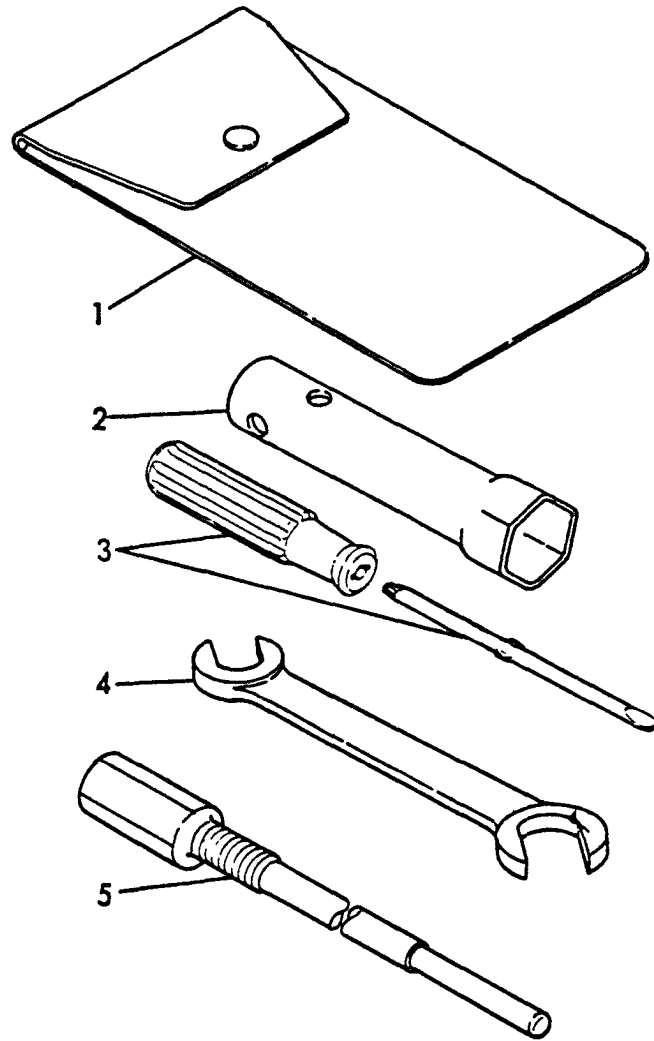
REF. NO.	LEV. 0	PART NO.	DESCRIPTION	-----Q'TY-----					
				(A)	(B)	(C)	(D)	(E)	(F)
1	.	Y160810-03400	PIPE, PROTECTOR	1					
2	.	Y160671-78200	WIRE	1					
3	.	Y160671-78230	WIRE, SENSOR UNIT	1					
4	.	Y160671-78350	STAY, SENSOR UNIT	1					
5	.	Y160260-78700	CLAMP, CORD	1					
6	.	Y160710-78800	SENSOR, OIL LEVEL	1					
7	.	Y160870-78810	SENSOR UNIT, OIL	1					
8	.	Y160370-78950	CLAMP L=98	2					
9	.	Y26106-060122	BOLT M 6X 12 PLATED	1					
10	.	Y26106-080142	BOLT M 8X 14 PLATED	1					
11	.	Y26113-060162	BOLT M 6X 16	1					
12	.	Y26753-060002	NUT M 6	1					

20 PANEL



REF. NO.	LEV. 0	PART NO.	DESCRIPTION	-----Q'TY-----					
				(A)	(B)	(C)	(D)	(E)	(F)
1	.	Y183920-91090	PANEL BOX ASSY	1					
2	..	Y183920-91150	PANEL ASSY	1					
3	...	Y183820-91320	LAMP 100V, PILOT	1					
4	...	Y183920-91720	BREAKER 15A	1					
5	...	Y183920-91320	PLUG SOCKET 120V	1					
6	...	Y183920-91310	PLUG SOCKET 240V	1					
7	...	Y183920-91330	PLUG SOCKET 120V	1					
8	...	Y183920-91390	WIRE HARNESS	1					
9	...	Y183520-91750	SWITCH	1					
10	...	Y183920-91240	HOLDER, FUSE	1					
11	...	Y183920-91590	FUSE 20A	1					
12	...	Y183920-91800	DIODE	1					
13	...	Y183520-91290	CREW 4X8	5					
14	..	Y183920-91400	BOX ASSY	1					
15	..	Y183520-91290	SCREW M4X8	2					
16	.	Y26106-060082	BOLT M6X8	3					

21 TOOLS



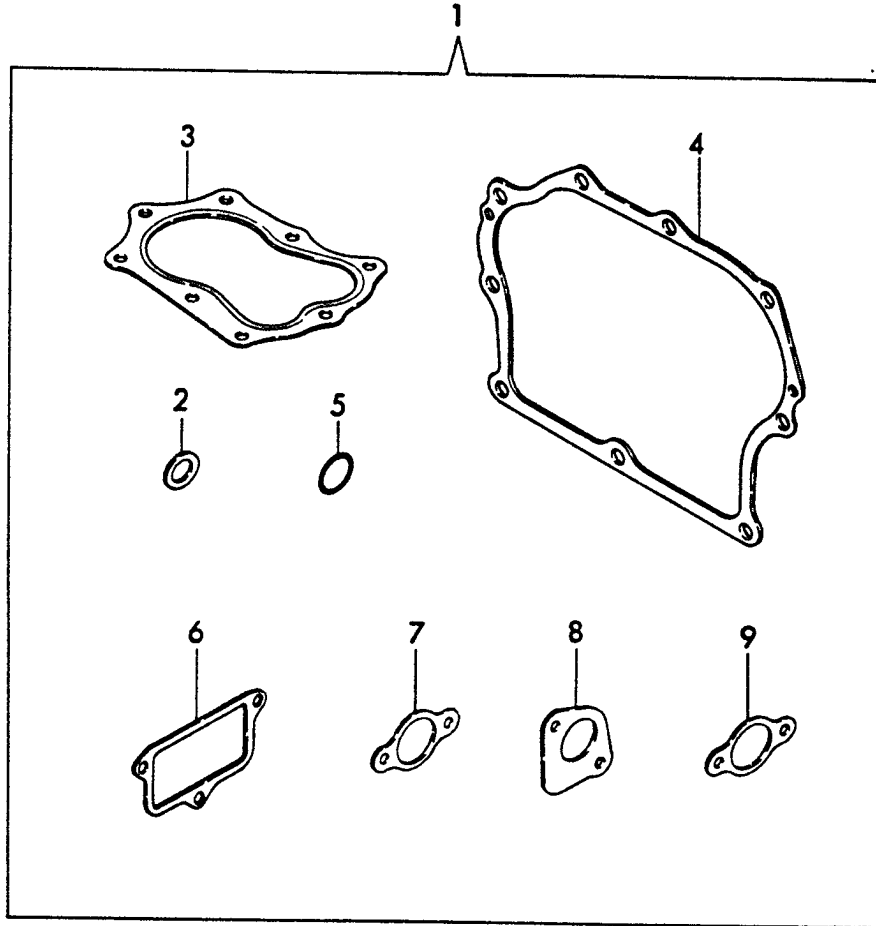
+-----+
 | 1C06 |
 | (1B01) |
 +-----+

(21) TOOL

(A)=EG4300 (D)=
 (B)= (E)=
 (C)= (F)=

REF. NO.	LEV. 0	PART NO.	DESCRIPTION	-----Q'TY-----					
				(A)	(B)	(C)	(D)	(E)	(F)
1	.	Y 160110-92610	BAG, TOOL	1					
2	.	Y 160120-92700	BOX WRENCH 21	1					
3	.	Y 160330-92730	DRIVER (+)	1					
4	.	Y 28110-100120	WRENCH 10X12	1					
5	.	Y 183920-92350	REMOVAL TOOL, ROTOR	1					

22 GASKET SET (OPTIONAL)



+-----+
 | 1C07 |
 | (1B01) |
 +-----+

(22) GASKET SET(OPTIONAL)

(A)=EG4300 (D)=
 (B)= (E)=
 (C)= (F)=

REF. NO.	LEV. 0	PART NO.	DESCRIPTION	-----Q'TY-----					
				(A)	(B)	(C)	(D)	(E)	(F)
1	.	Y 783920-92600	GASKET SET	1					
2	..	Y 104200-59170	GASKET 12	1					
3	..	Y 160910-01330	GASKET, HEAD	1					
4	..	Y 160910-01410	GASKET, CRANKCASE	1					
5	..	Y 24311-000180	O-RING 1A P 18	1					
6	..	Y 160810-03070	GASKET, BREATHER	1					
7	..	Y 160910-56150	GASKET, CARBURETOR	3					
8	..	Y 160910-13200	GASKET, MUFFLER	1					
9	..	Y 160910-56170	GASKET, INSULATOR	1					