



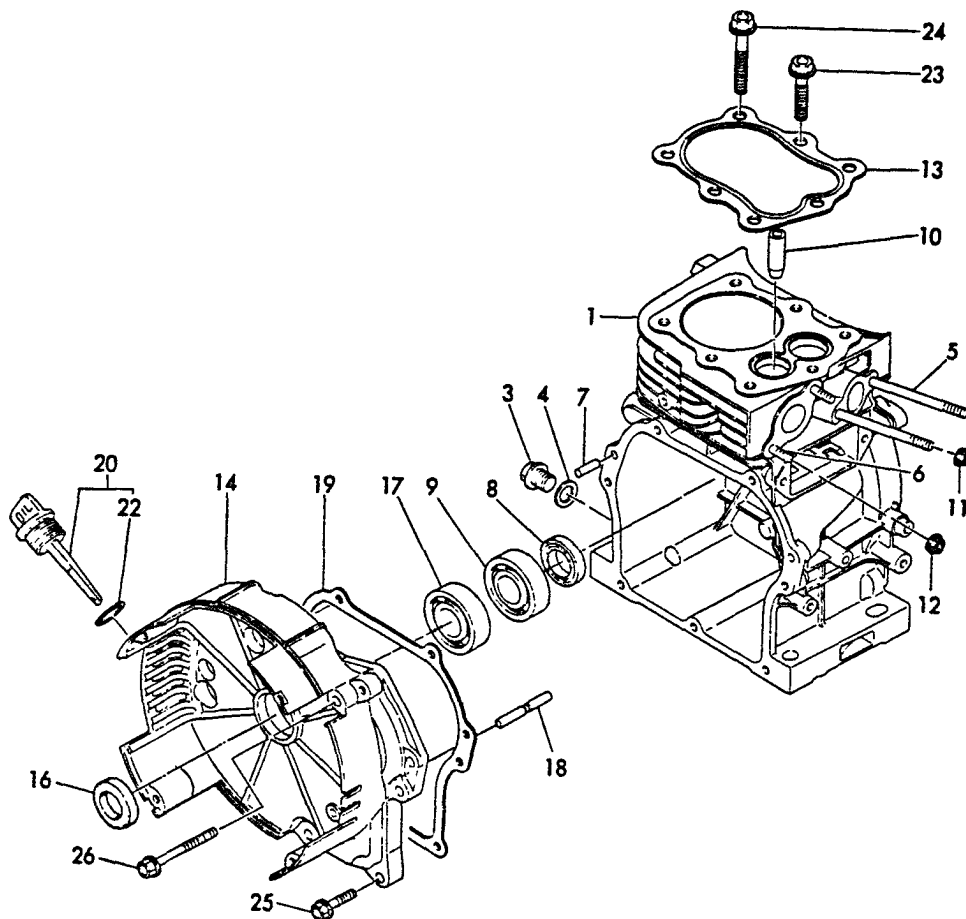
PARTS CATALOGUE

EG-1500



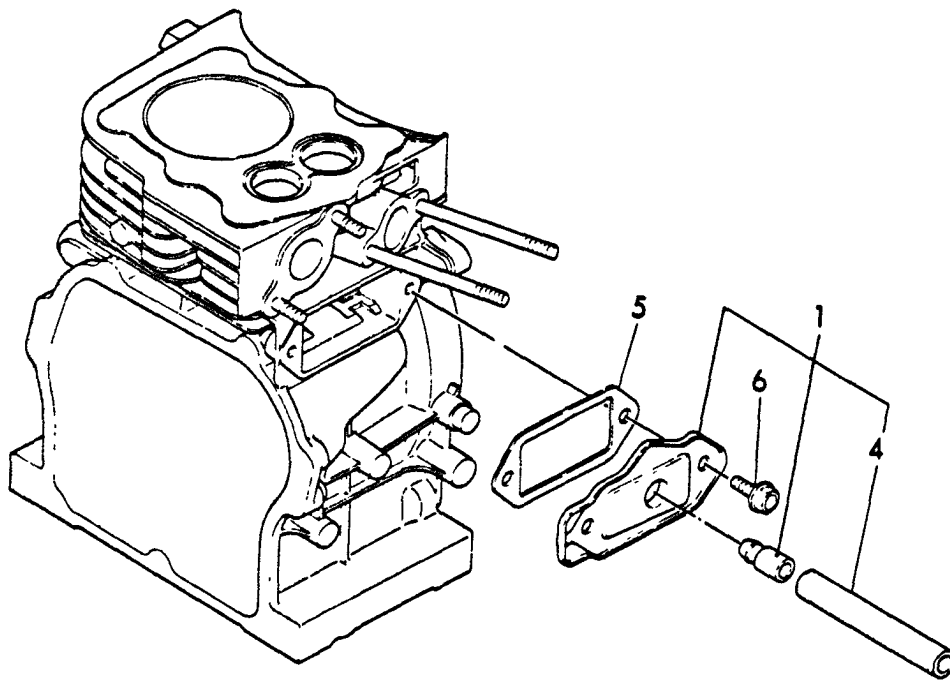
898 595-8036 0

1 CYLINDER BODY



REF. NO.	LEV.	O	PART NO.	DESCRIPTION	-----Q'TY-----					
					(A)	(B)	(C)	(D)	(E)	(F)
1	.		Y760671-01560	BODY ASSY, CYLINDER	1					
3	..		Y160610-01690	PLUG, DRAIN	1					
4	..		Y104200-59170	GASKET 12	1					
5	..		Y160610-04570	BOLT M 6X70	2					
6	..		Y160610-04620	BOLT M 6X16	2					
7	..		Y22312-060160	PARALLEL PIN 6X16	2					
8	..		*REF. 8=7	OIL SEAL TC20326	1					
9	..		*REF. 8=8	BEARING	1					
10	..		*REF. 5=5	VALVE GUIDE	1					
11	..		*REF. 6=1	NUT M6	2					
12	..		*REF. 6=18	NUT M6	2					
13	.		Y160611-01330	GASKET, CYL. HEAD	1					
14	.		Y760640-01500	COVER ASSY., SIDE	1					
16	..		*REF. 8=7	SEAL, OIL TC20326	1					
17	..		*REF. 8=8	BEARING	1					
18	..		*REF. 14=1	SHAFT, GOVERNOR	1					
19	.		Y160610-01410	GASKET	1					
20	.		Y160710-01740	CAP ASSY	1					
22	..		Y24311-000180	O-RING P18	1					
23	.		Y160610-04171	BOLT M8X38	4					
24	.		Y160610-04191	BOLT M8X60	3					
25	.		Y26476-060252	BOLT M6X25	6					
26	.		Y26476-060552	BOLT M6X55	1					

2 BREATHER



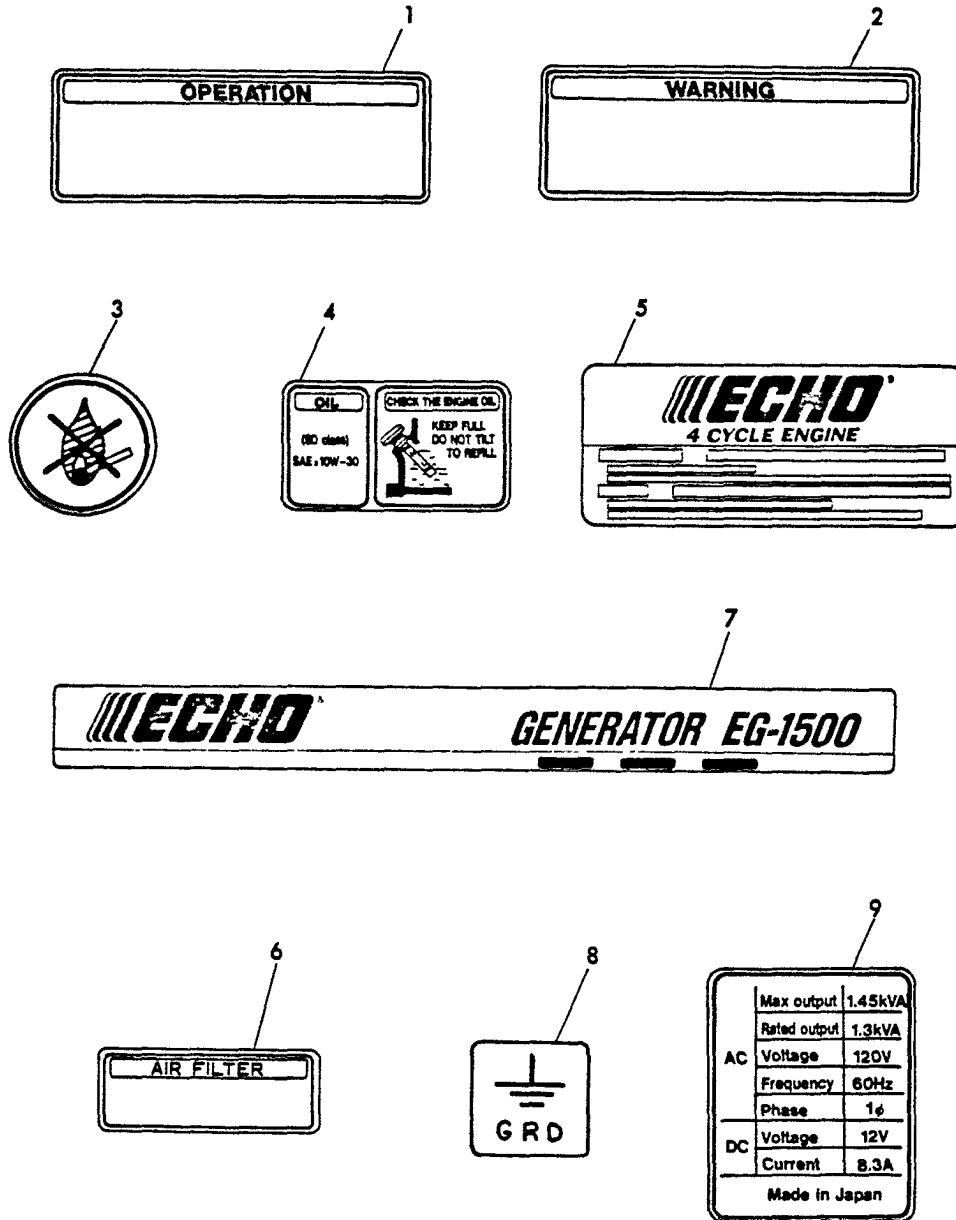
+-----+
 | 1B03 |
 | (1B01) |
 +-----+

(2) BREATHER

(A)=EG1500 (D)=
 (B)= (E)=
 (C)= (F)=

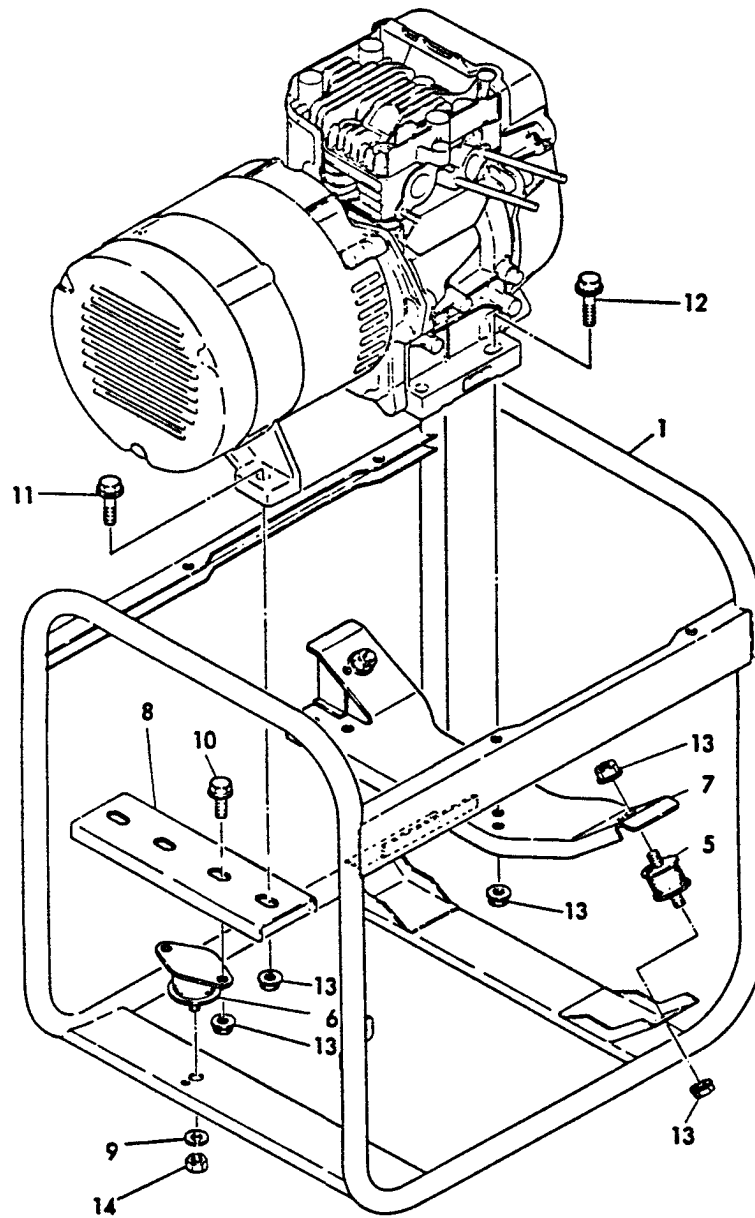
REF. NO.	LEV.	0	PART NO.	DESCRIPTION	-----Q'TY-----					
					(A)	(B)	(C)	(D)	(E)	(F)
1	.		Y 160610-03010	BREATHER ASSY	1					
4	..		Y 160610-03180	PIPE, BREATHER	1					
5	.		Y 160610-03070	GASKET	1					
6	.		Y 26476-060142	BOLT M6X14	2					

3 LABELS



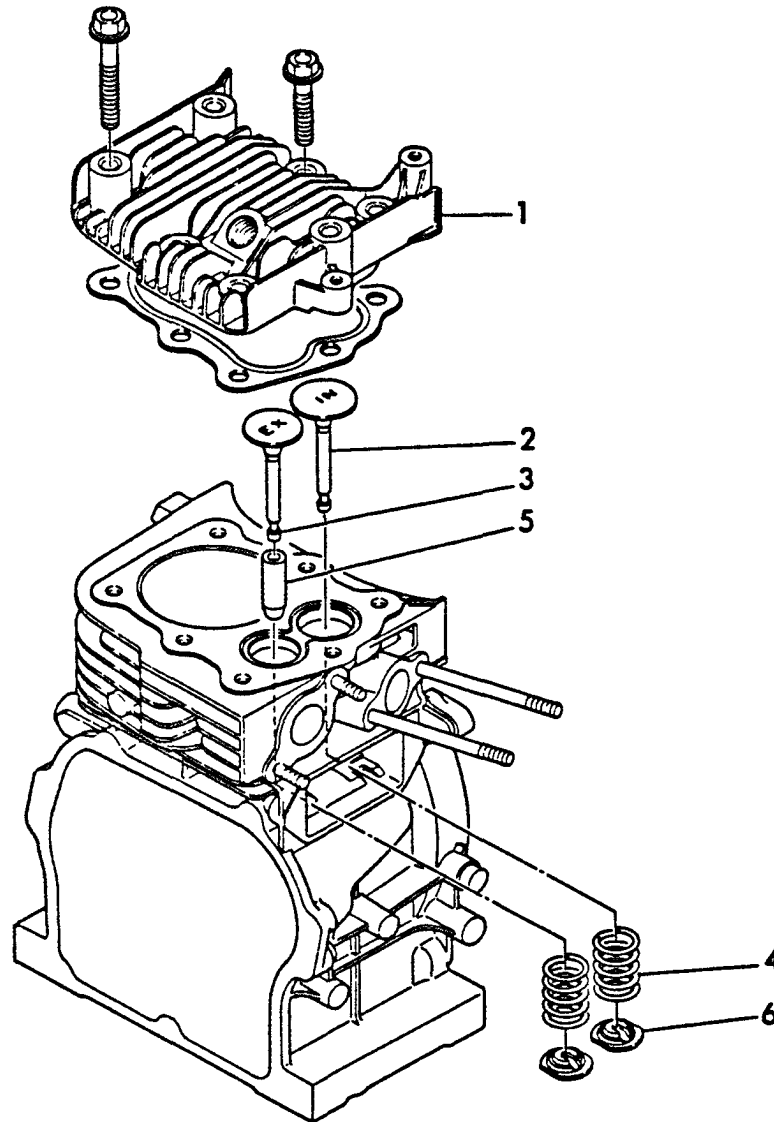
REF. NO.	LEV. 0	PART NO.	DESCRIPTION	-----Q'TY-----					
				(A)	(B)	(C)	(D)	(E)	(F)
1	.	Y 183621-07250	LABEL, OPERATION	1					
2	.	Y 183210-07260	LABEL, WARNING	1					
3	.	Y 183210-07270	LABEL, NON FIRE	1					
4	.	Y 183210-07290	LABEL, OIL	1					
5	.	Y 160671-07370	LABEL(ECHO)	1					
6	.	Y 183210-07370	LABEL, AIR CLEANER	1					
7	.	Y 183621-07180	LABEL(EG1500)	1					
8	.	Y 183210-07390	LABEL, EARTH	1					
9	.	Y 183621-07530	LABEL, GENERATOR	1					

4 FRAME



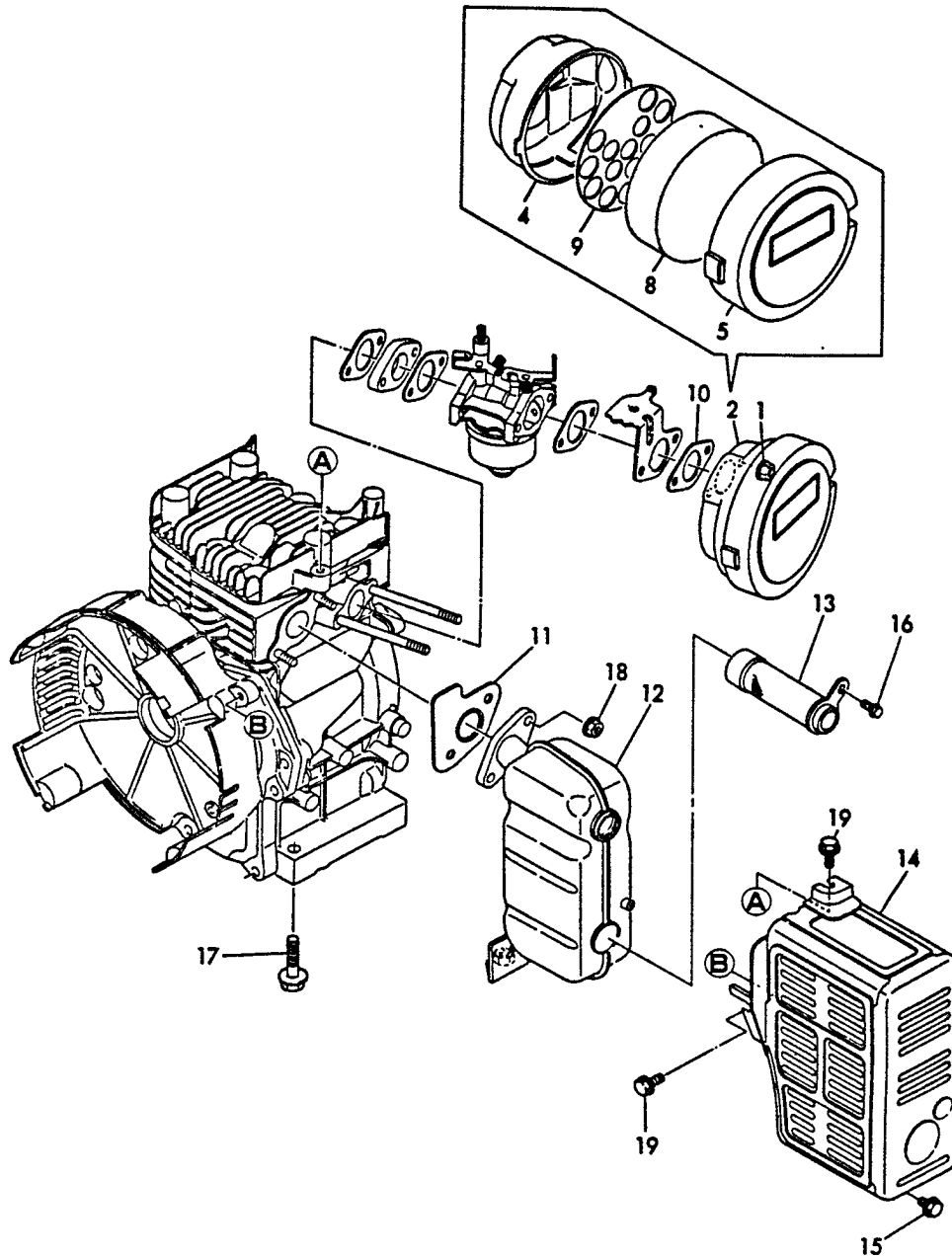
REF. NO.	LEV. 0	PART NO.	DESCRIPTION	-----Q'TY-----					
				(A)	(B)	(C)	(D)	(E)	(F)
1	.	Y 783621-08720	FRAME ASSY	1					
5	.	Y 183720-08210	DAMPER, FRONT	2					
6	.	Y 183621-08220	DAMPER, REAR	1					
7	.	Y 183621-08230	STAY, DAMPER	1					
8	.	Y 183720-08250	STAY, REAR DAMPER	1					
9	.	Y 22217-100000	SPRING WASHER 10	1					
10	.	Y 26106-080202	BOLT M8X20	2					
11	.	Y 26106-080302	BOLT M8X30	2					
12	.	Y 26106-080382	BOLT M8X38	2					
13	.	Y 26366-080002	NUT M8	10					
14	.	Y 26717-100002	NUT M10	1					

5 CYLINDER HEAD



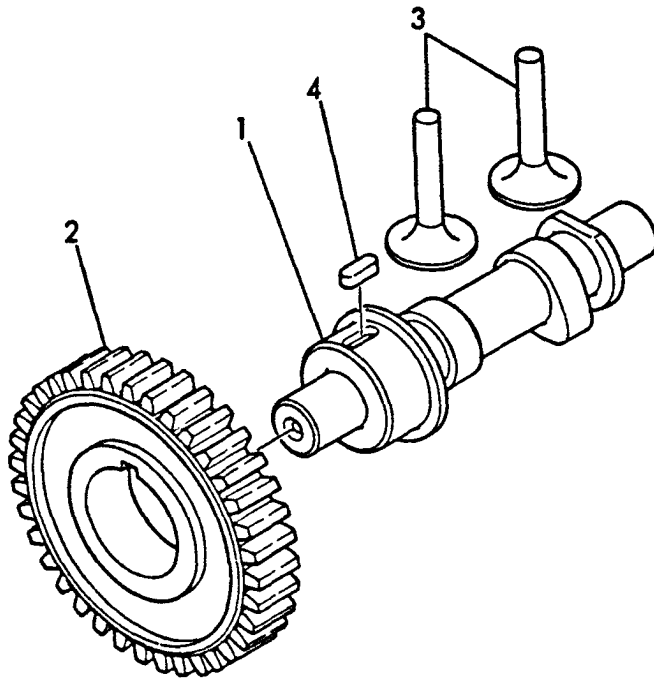
REF. NO.	LEV. 0	PART NO.	DESCRIPTION	-----Q'TY-----					
				(A)	(B)	(C)	(D)	(E)	(F)
1	.	Y160611-11010	HEAD, CYLINDER	1					
2	.	Y160610-11100	VALVE, SUCTION	1					
3	.	Y160610-11110	VALVE, EXHAUST	1					
4	.	Y160610-11120	SPRING, VALVE	2					
5	.	Y160610-11160	GUIDE, VALVE	1					
6	.	Y160610-11180	RETAINER	2					

6 AIR CLEANER & MUFFLER



REF. NO.	LEV. 0	PART NO.	DESCRIPTION	-----Q'TY-----					
				(A)	(B)	(C)	(D)	(E)	(F)
1	.	Y 26366-060002	NUT M6	2					
2	.	Y 760610-12560	CLEANER ASSY, AIR	1					
4	..	Y 160610-12520	BODY, AIR CLEANER	1					
5	..	Y 760610-12540	CAP, AIR CLEANER	1					
8	..	Y 160610-12540	ELEMENT, AIR CLEANER	1					
9	..	Y 160610-12550	HOLDER, ELEMENT	1					
10	.	Y 160610-56150	GASKET, CARBURETOR	1					
11	.	Y 160610-13201	GASKET, MUFFLER	1					
12	.	Y 160671-13550	MUFFLER	1					
13	.	Y 160671-13650	SPARK ARRESTER	1					
14	.	Y 160671-13810	COVER, MUFFLER	1					
15	.	Y 26106-060082	BOLT M6X 8	1					
16	.	Y 26106-060102	BOLT M6X 10	1					
17	.	Y 26106-080302	BOLT M8X 30	1					
18	.	Y 26366-060002	NUT M6	2					
19	.	Y 26476-060142	BOLT M6X 14	2					

7 CAMSHAFT



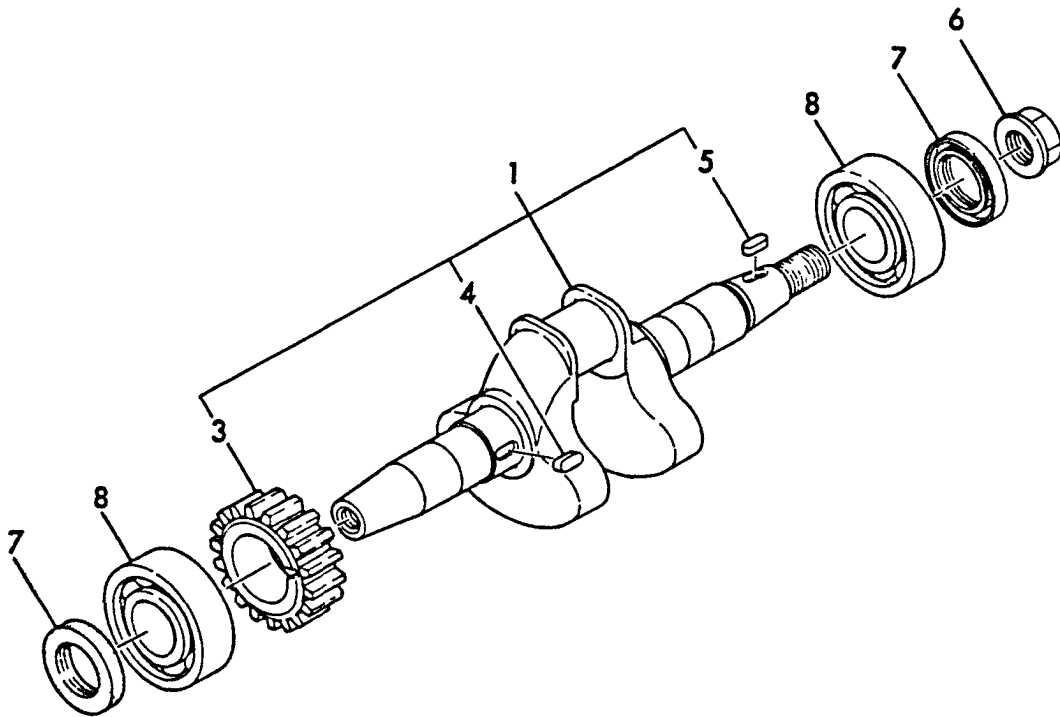
+-----+
 | 1B08 |
 | (1B01) |
 +-----+

(7) CAMSHAFT

(A)=EG1500 (D)=
 (B)= (E)=
 (C)= (F)=

REF. NO.	LEV. 0	PART NO.	DESCRIPTION	-----Q'TY-----					
				(A)	(B)	(C)	(D)	(E)	(F)
1	.	Y 160640-14011	CAMSHAFT	1					
2	.	Y 160641-14100	GEAR, CAMSHAFT	1					
3	.	Y 160610-14200	TAPPET	2					
4	.	Y 160610-21290	KEY 4X10	1					

8 CRANKSHAFT & MAIN BEARING



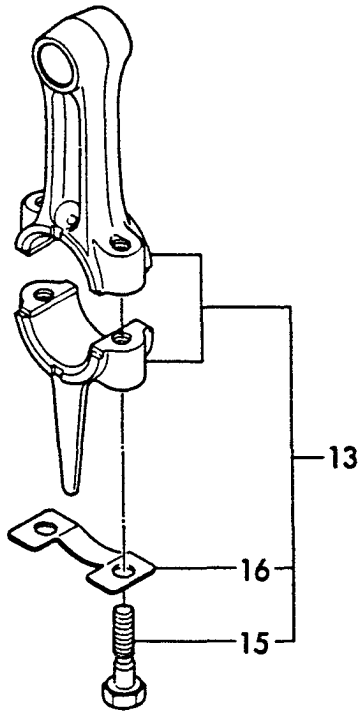
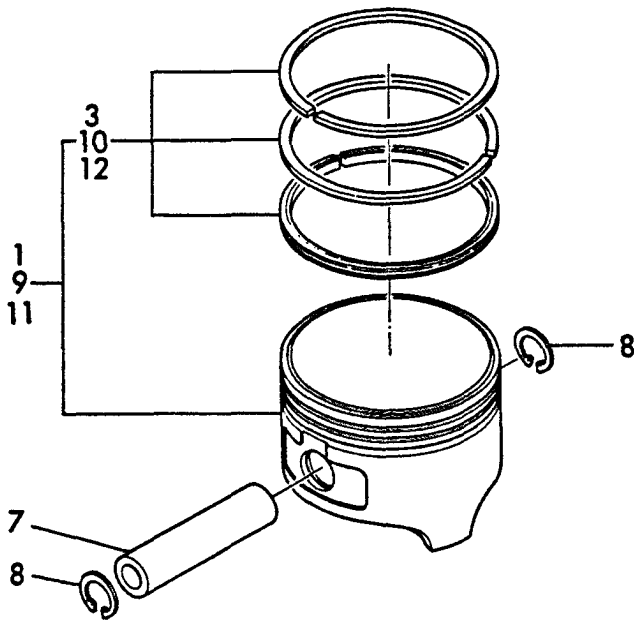
+-----+
 | 1B09 |
 | (1B01) |
 +-----+

(8) CRANKSHAFT & MAIN BEARING

(A)=EG1500 (D)=
 (B)= (E)=
 (C)= (F)=

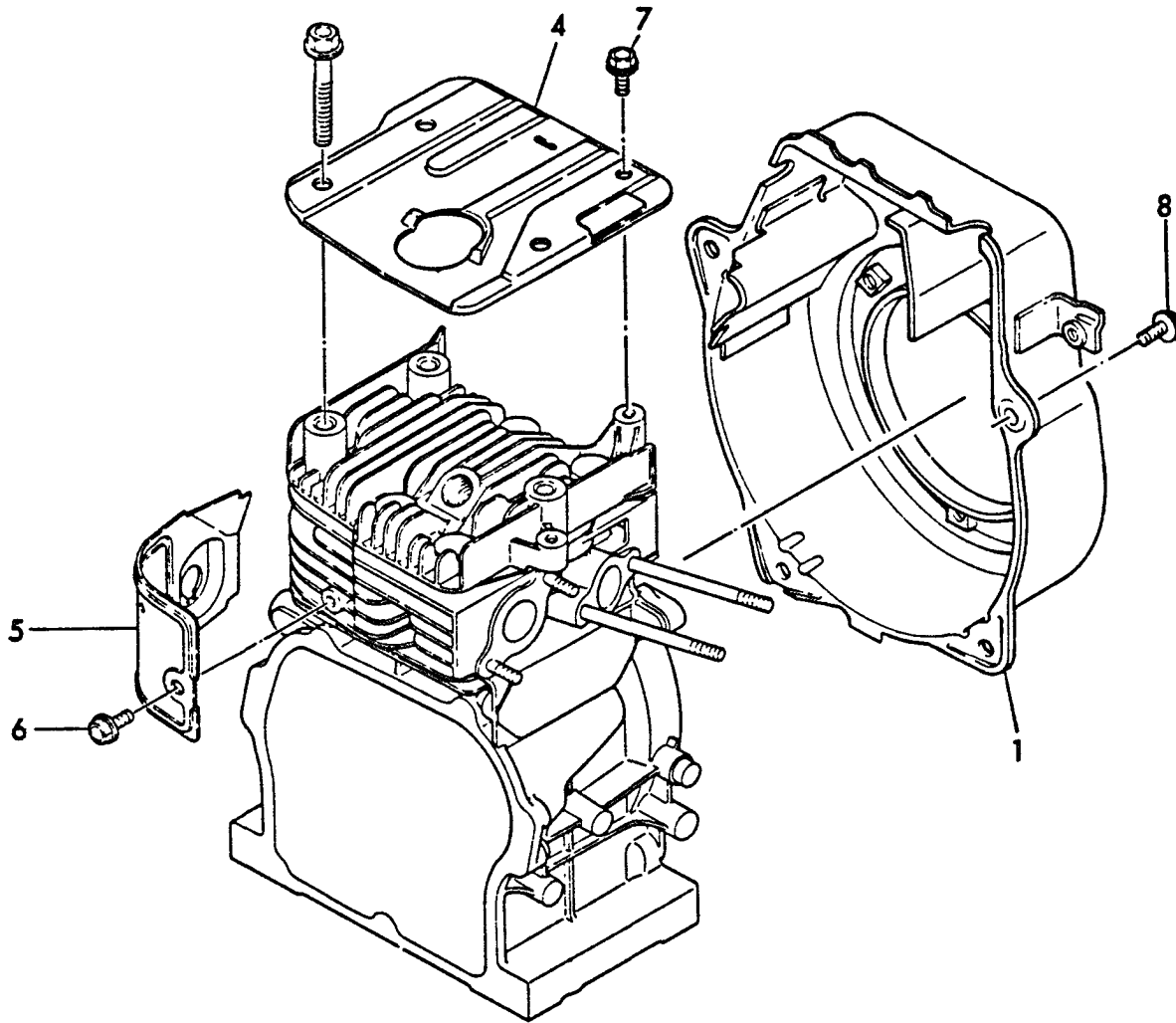
REF. NO.	LEV. 0	PART NO.	DESCRIPTION	-----Q'TY-----					
				(A)	(B)	(C)	(D)	(E)	(F)
1	.	Y 760640-21800	CRANKSHAFT ASSY.	1					
3	..	Y 160641-21200	GEAR, CRANKSHAFT	1					
4	..	Y 160610-21290	KEY 4X10	1					
5	..	Y 160610-21290	KEY 4X10	1					
6	.	Y 26376-120002	NUT M12	1					
7	.	Y 160610-02220	SEAL, OIL TC20326	2					
8	.	Y 24101-062040	BEARING	2					

9 PISTON & CONNECTING ROD



REF. NO.	LEV. 0	PART NO.	DESCRIPTION	-----Q'TY-----					
				(A)	(B)	(C)	(D)	(E)	(F)
1	.	Y 160611-22010	PISTON W/RING	1					
3	..	Y 760611-22500	RING SET, PISTON	1					
7	.	Y 160611-22300	PIN, PISTON	1					
8	.	Y 22252-000130	CIRCLIP 13-H	2					
9	.	Y 160611-22470	PISTON ASY O.S.=0.25	1					
10	..	Y 760611-22540	RING SET O.S.=0.25	1					
11	.	Y 160611-22480	PISTON ASY O.S.=0.5	1					
12	..	Y 760611-22550	RING SET O.S.=0.5	1					
13	.	Y 760610-23100	ROD ASSY, CONNECTING	1					
15	..	Y 160610-23200	BOLT, ROD	2					
16	..	Y 160610-23210	WASHER	1					

10 COOLING FAN CASE



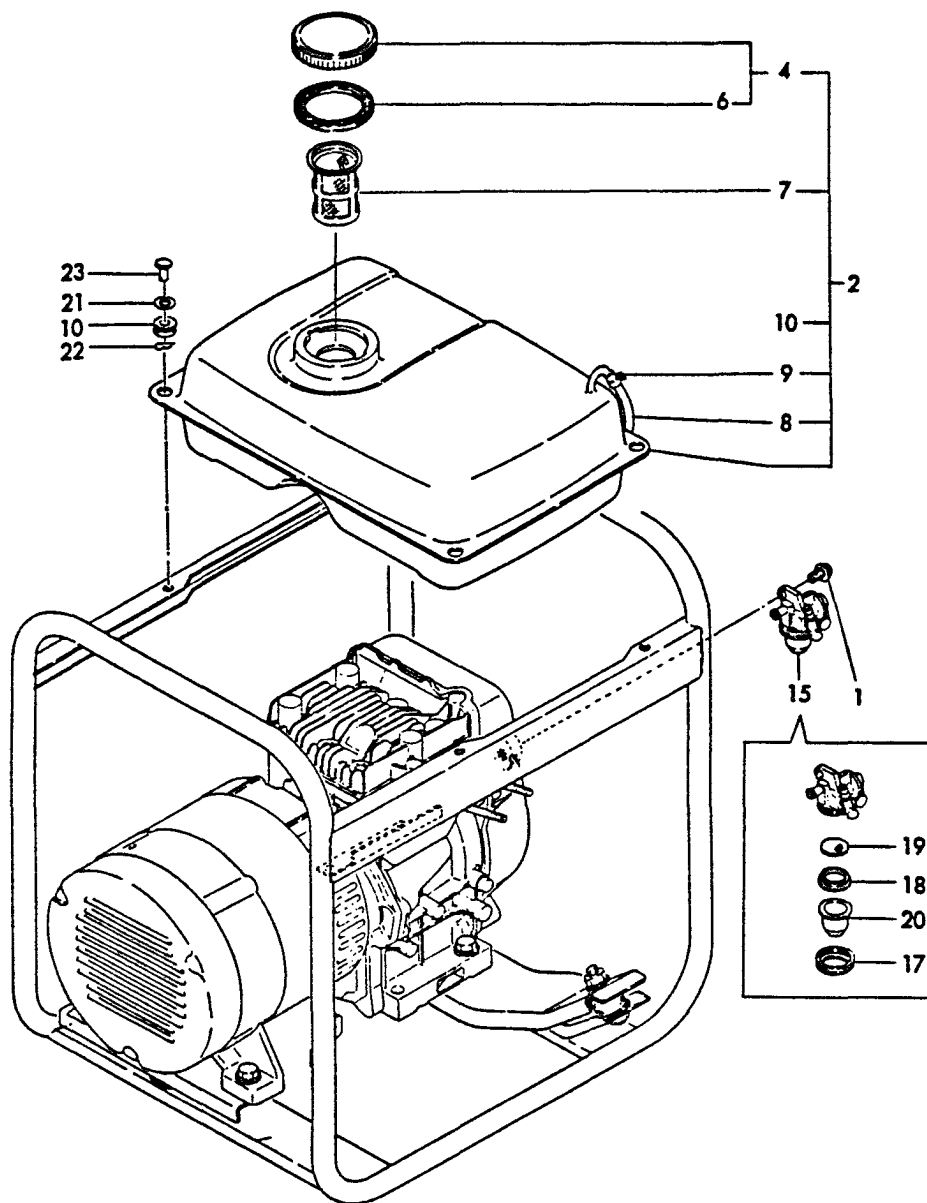
+-----+
 | 1B11 |
 | (1B01) |
 +-----+

(10) COOLING FAN CASE

(A)=EG1500 (D)=
 (B)= (E)=
 (C)= (F)=

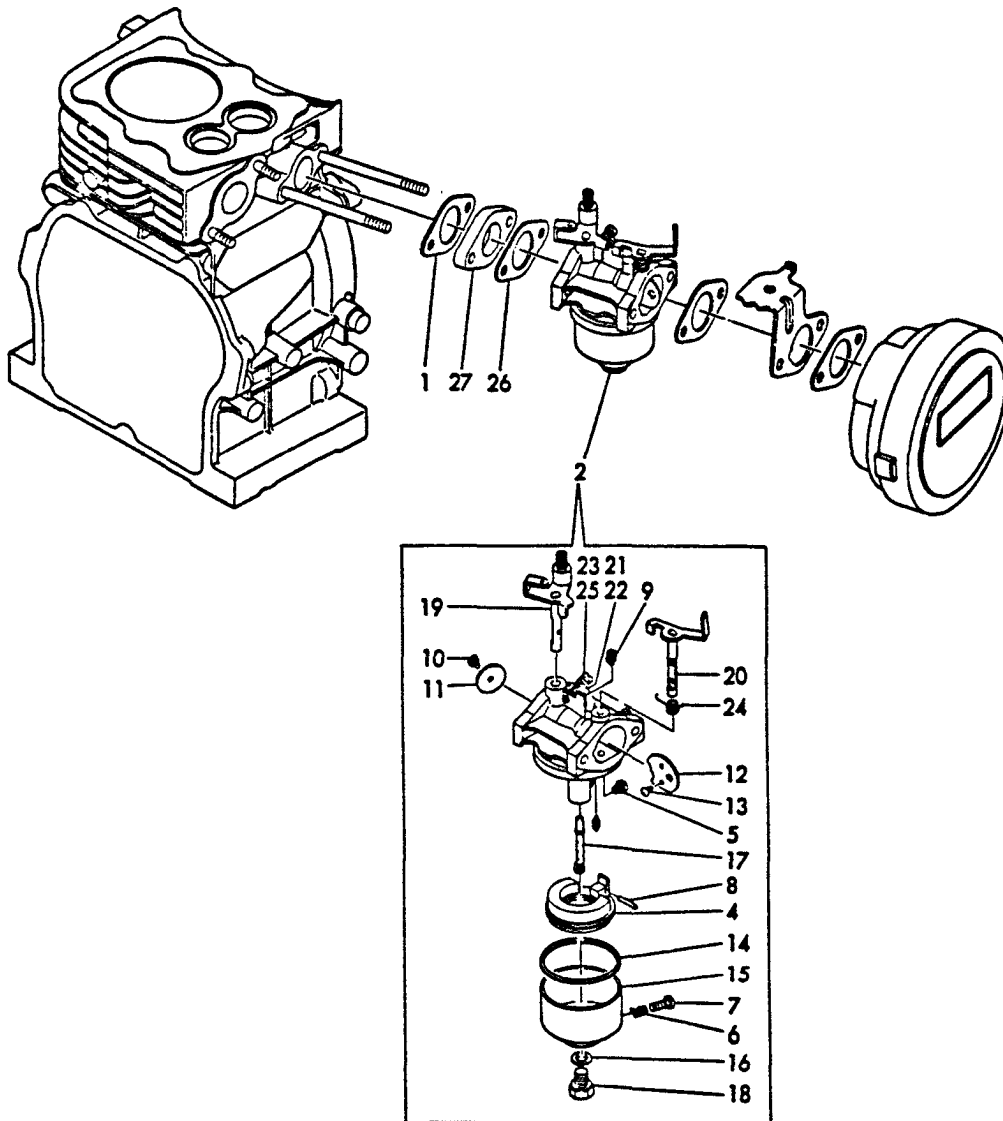
REF. NO.	LEV. 0	PART NO.	DESCRIPTION	-----Q'TY-----					
				(A)	(B)	(C)	(D)	(E)	(F)
1	.	Y 760641-45600	FAN CASE ASSY	1					
4	.	Y 160611-45200	COVER, CYLINDER HEAD	1					
5	.	Y 160611-45211	COVER, CYLINDER	1					
6	.	Y 26476-060142	BOLT M6X14	1					
7	.	Y 26476-060142	BOLT M6X14	1					
8	.	Y 26476-060142	BOLT M6X14	4					

11 FUEL TANK



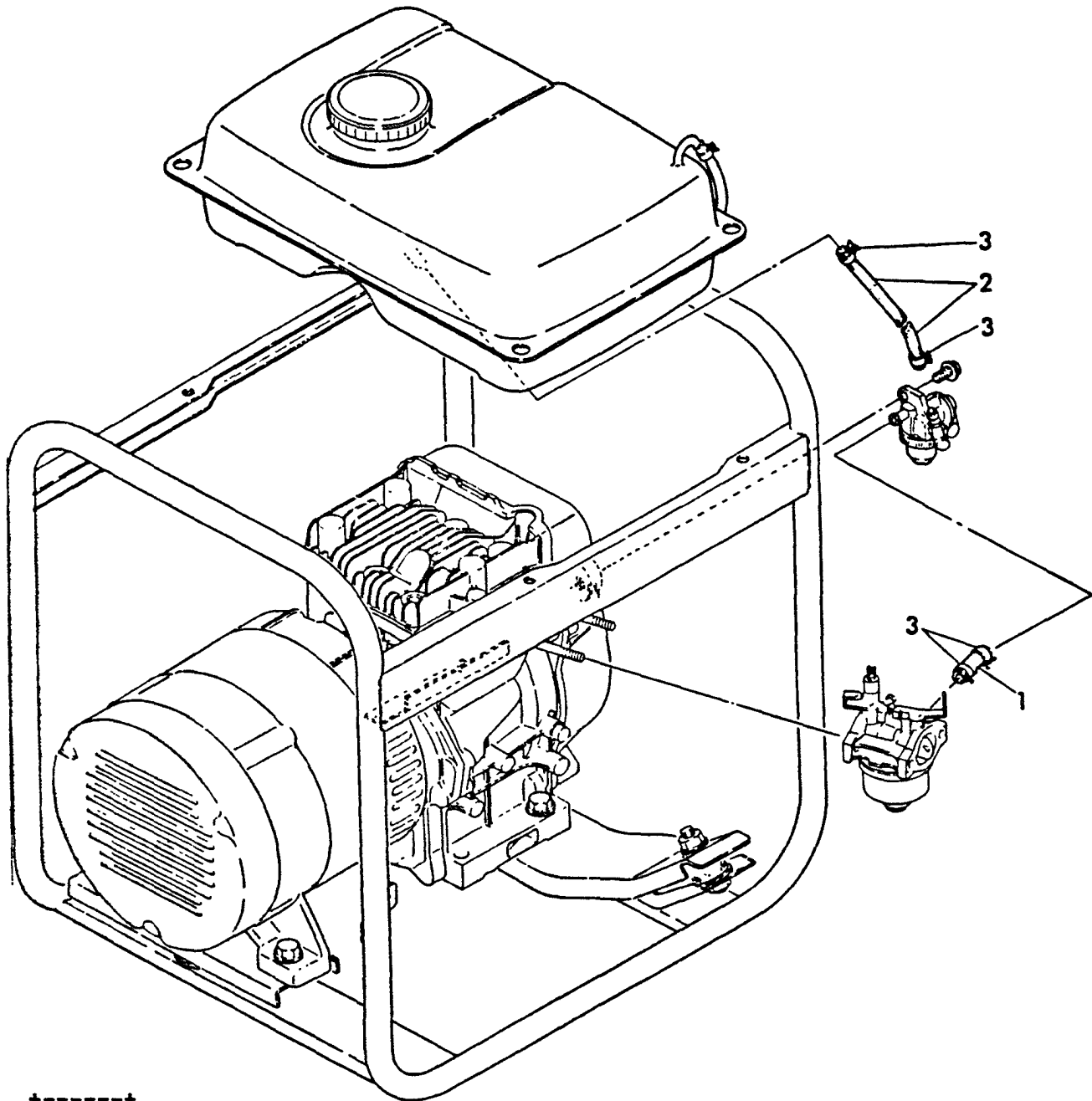
REF. NO.	LEV.	O	PART NO.	DESCRIPTION	-----Q'TY-----					
					(A)	(B)	(C)	(D)	(E)	(F)
1	.		Y 26106-060082	BOLT M6X8	1					
2	.		Y 783621-55730	FUEL TANK ASSY	1					
4	..		Y 160710-55060	CAP ASSY, FUEL TANK	1					
6	...		Y 160393-55050	GASKET, CAP	1					
7	..		Y 160710-55100	FILTER, FUEL	1					
8	..		Y 160720-55150	PIPE, FUEL GAUGE	1					
9	..		Y 124722-59050	CLAMP 9	2					
10	..		Y 183720-55210	GROMMET	4					
15	.		Y 160710-55301	COCK ASSY, FUEL	1					
17	..		Y 160710-55360	RING	1					
18	..		Y 160710-55370	GASKET	1					
19	..		Y 160710-55380	FILTER	1					
20	..		Y 160710-55390	CUP	1					
21	.		Y 160120-76940	WASHER	4					
22	.		Y 22360-060000	PIN, SNAP 6	4					
23	.		Y 22487-060140	PIN	4					

12 CARBURETOR



REF. NO.	LEV.	O	PART NO.	DESCRIPTION	-----Q'TY-----					
					(A)	(B)	(C)	(D)	(E)	(F)
1	.	Y	160310-13200	GASKET, MUFFLER	1					
2	.	Y	160671-56010	CARBURETOR ASSY	1					
4	..	Y	160610-56621	FLOAT	1					
5	..	Y	160710-56650	JET, MAIN	1					
6	..	Y	181230-56380	SPRING	1					
7	..	Y	160610-56900	SCREW	1					
8	..	Y	160610-56631	PIN	1					
9	..	Y	160710-56740	JET, PILOT	1					
10	..	Y	160120-56670	SCREW	1					
11	..	Y	160610-56760	VALVE, THROTTLE	1					
12	..	Y	160610-56680	VALVE, CHOKE	1					
13	..	Y	160710-56710	SCREW	2					
14	..	Y	160610-56610	GASKET	1					
15	..	Y	160610-56640	BODY, FLOAT CHAMBER	1					
16	..	Y	160610-56550	WASHER	1					
17	..	Y	160610-56800	NOZZLE	1					
18	..	Y	160610-56660	BOLT	1					
19	..	Y	160770-56770	SHAFT, THROTTLE	1					
20	..	Y	160770-56690	SHAFT, CHOKE	1					
21	..	Y	181230-56370	SCREW	1					
22	..	Y	181130-56640	SPRING	1					
23	..	Y	160610-56750	SCREW, PILOT	1					
24	..	Y	160710-56720	SPRING	1					
25	..	Y	181130-56640	SPRING	1					
26	.	Y	160610-56150	GASKET, CARBURETOR	1					
27	.	Y	160610-56160	SPACER, CARBURETOR	1					

13 FUEL PIPE



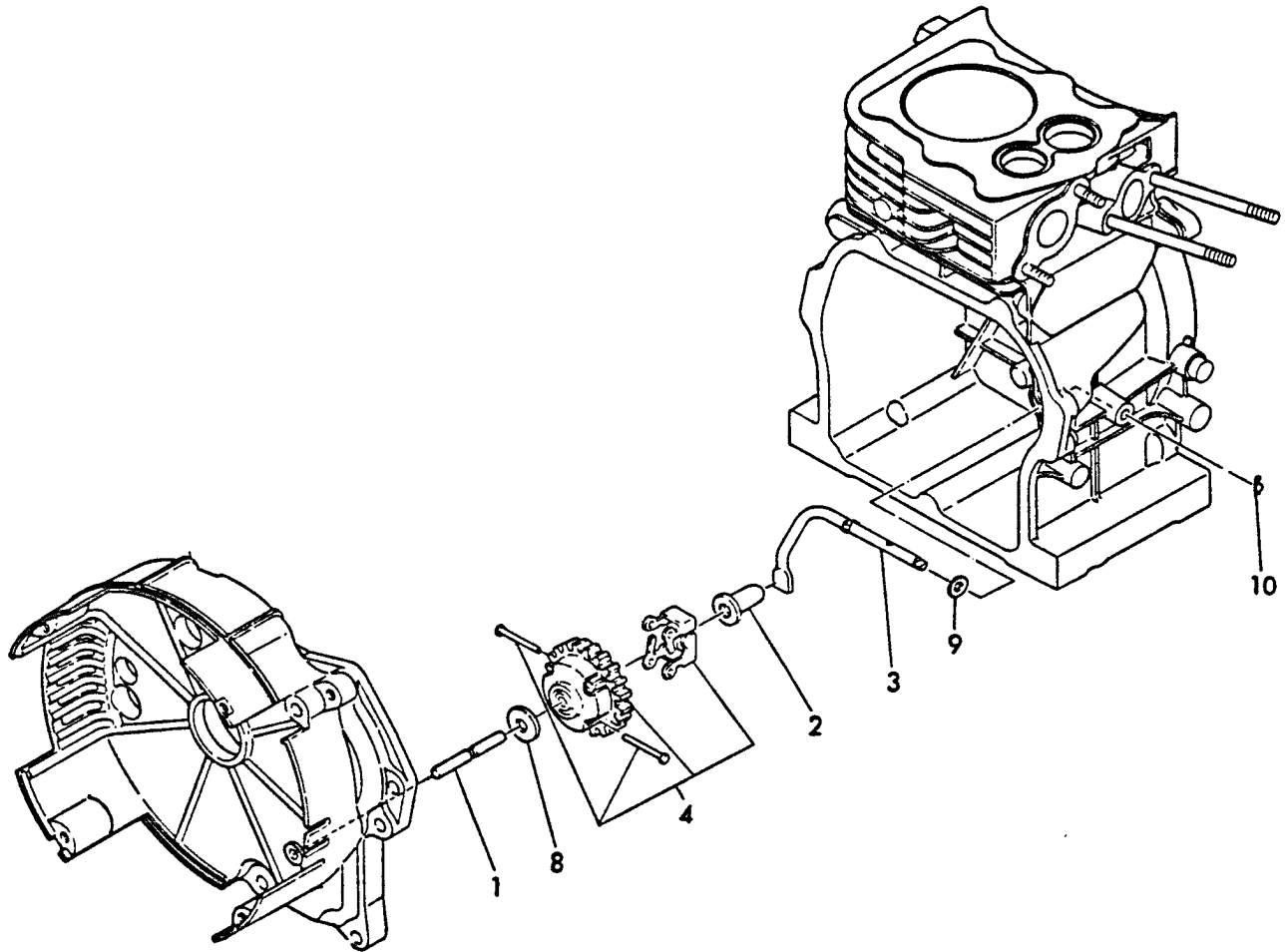
+-----+
 | 1B14 |
 | (1B01) |
 +-----+

(13) FUEL PIPE

(A)=EG1500 (D)=
 (B)= (E)=
 (C)= (F)=

REF. NO.	LEV. 0	PART NO.	DESCRIPTION	-----Q'TY-----					
				(A)	(B)	(C)	(D)	(E)	(F)
1	.	Y160610-59160	PIPE, FUEL	1					
2	.	Y183620-59610	PIPE, FUEL	1					
3	.	Y124060-77680	CLAMP	4					

14 GOVERNOR



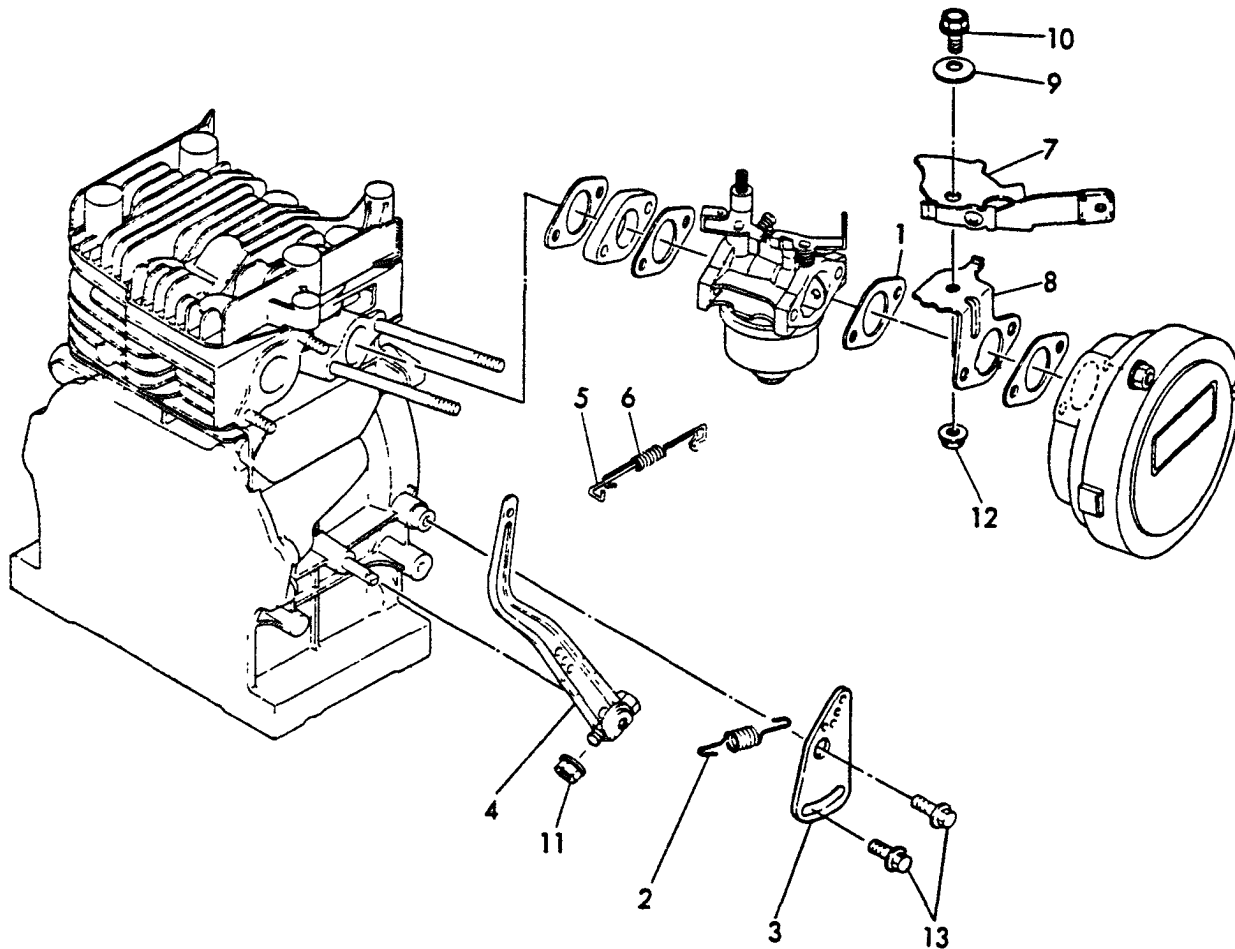
+-----+
 | 1B15 |
 | (1B01) |
 +-----+

(14) GOVERNOR

(A)=EG1500 (D)=
 (B)= (E)=
 (C)= (F)=

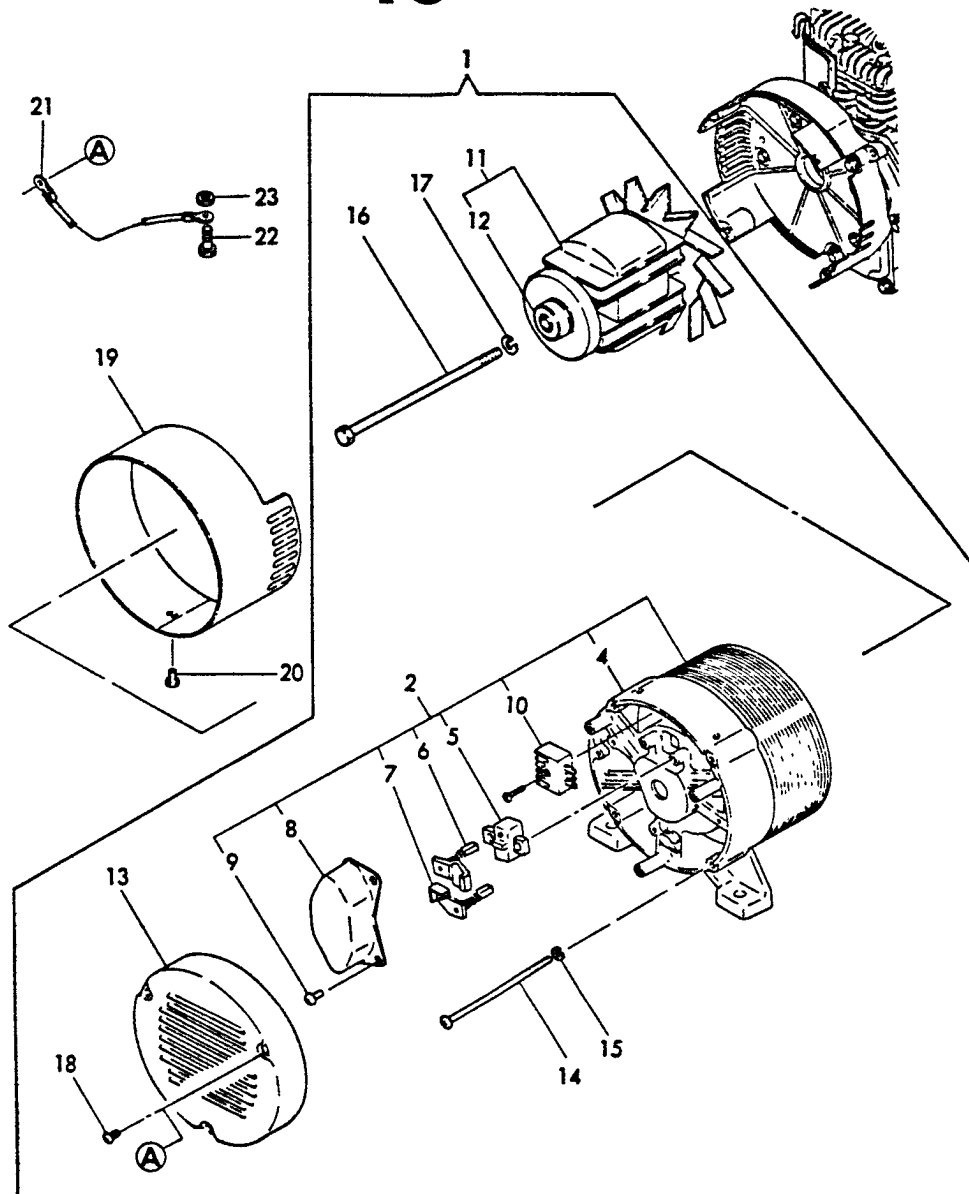
REF. NO.	LEV. 0	PART NO.	DESCRIPTION	-----Q'TY-----					
				(A)	(B)	(C)	(D)	(E)	(F)
1	.	Y160610-61100	SHAFT, GOVERNOR	1					
2	.	Y160610-61300	SPINDLE	1					
3	.	Y160610-61310	YOKE	1					
4	.	Y160641-61600	GEAR ASSY., GOVERNOR	1					
8	.	Y160120-76940	WASHER	1					
9	.	Y22137-060000	WASHER 6	1					
10	.	Y22360-060000	SNAP PIN 6	1					

15 CONTROL DEVICE



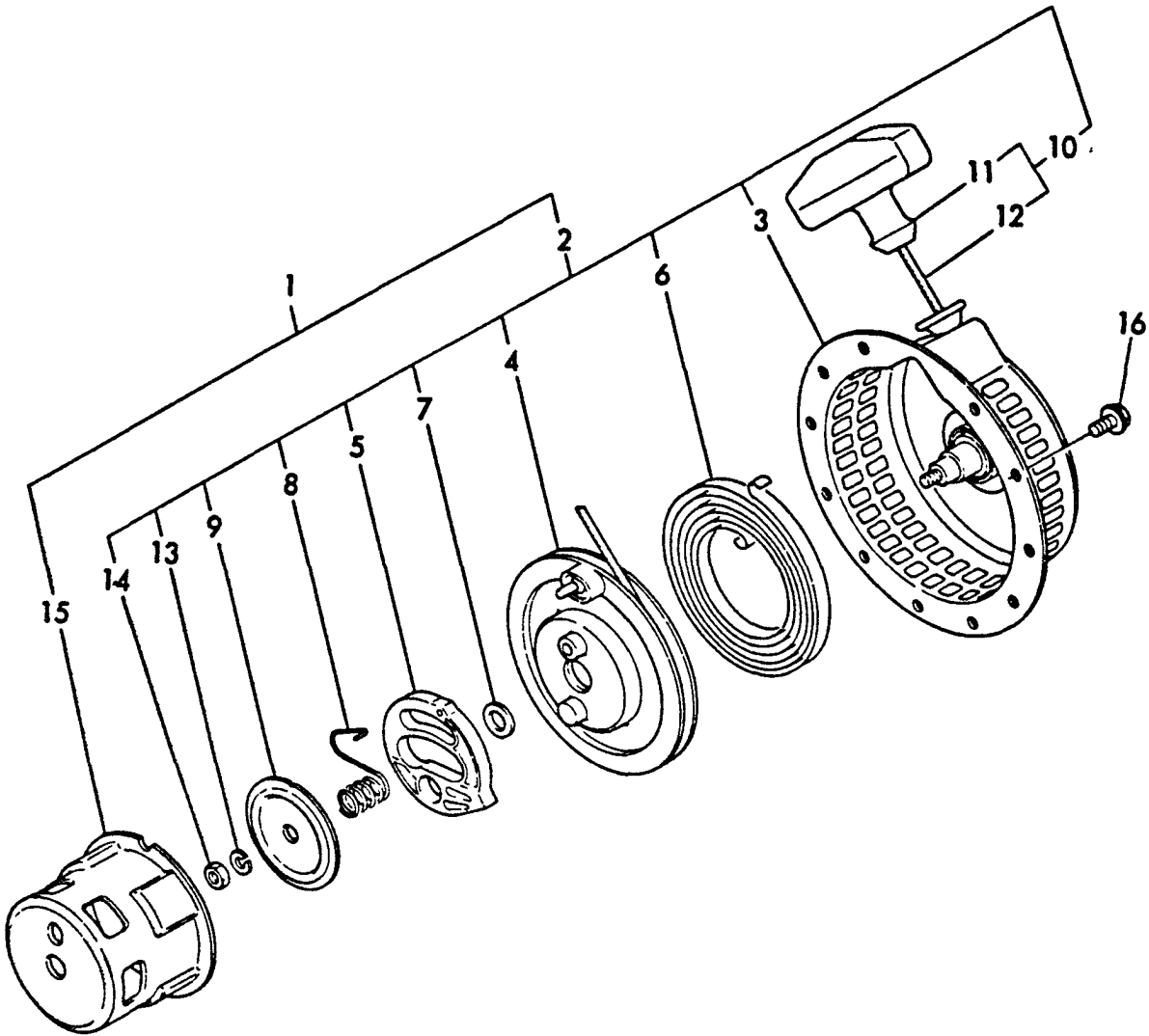
REF. NO.	LEV. 0	PART NO.	DESCRIPTION	-----Q'TY-----					
				(A)	(B)	(C)	(D)	(E)	(F)
1	.	Y160610-56150	GASKET, CARBURETOR	1					
2	.	Y160610-66011	SPRING, REGULATOR	1					
3	.	Y160970-66120	HANDLE, REGULATOR	1					
4	.	Y160610-66151	LEVER, GOVERNOR	1					
5	.	Y160610-66201	LINK, THROTTLE	1					
6	.	Y160710-66220	SPRING, TENSION	1					
7	.	Y160770-66300	LEVER ASSY	1					
8	.	Y160770-66330	BRACKET	1					
9	.	Y160670-66350	COLLER	1					
10	.	Y26106-060122	BOLT M6X12	1					
11	.	Y26366-060002	NUT M6	1					
12	.	Y26366-060002	NUT M6	1					
13	.	Y26476-060142	BOLT M6X14	2					

16 GENERATOR



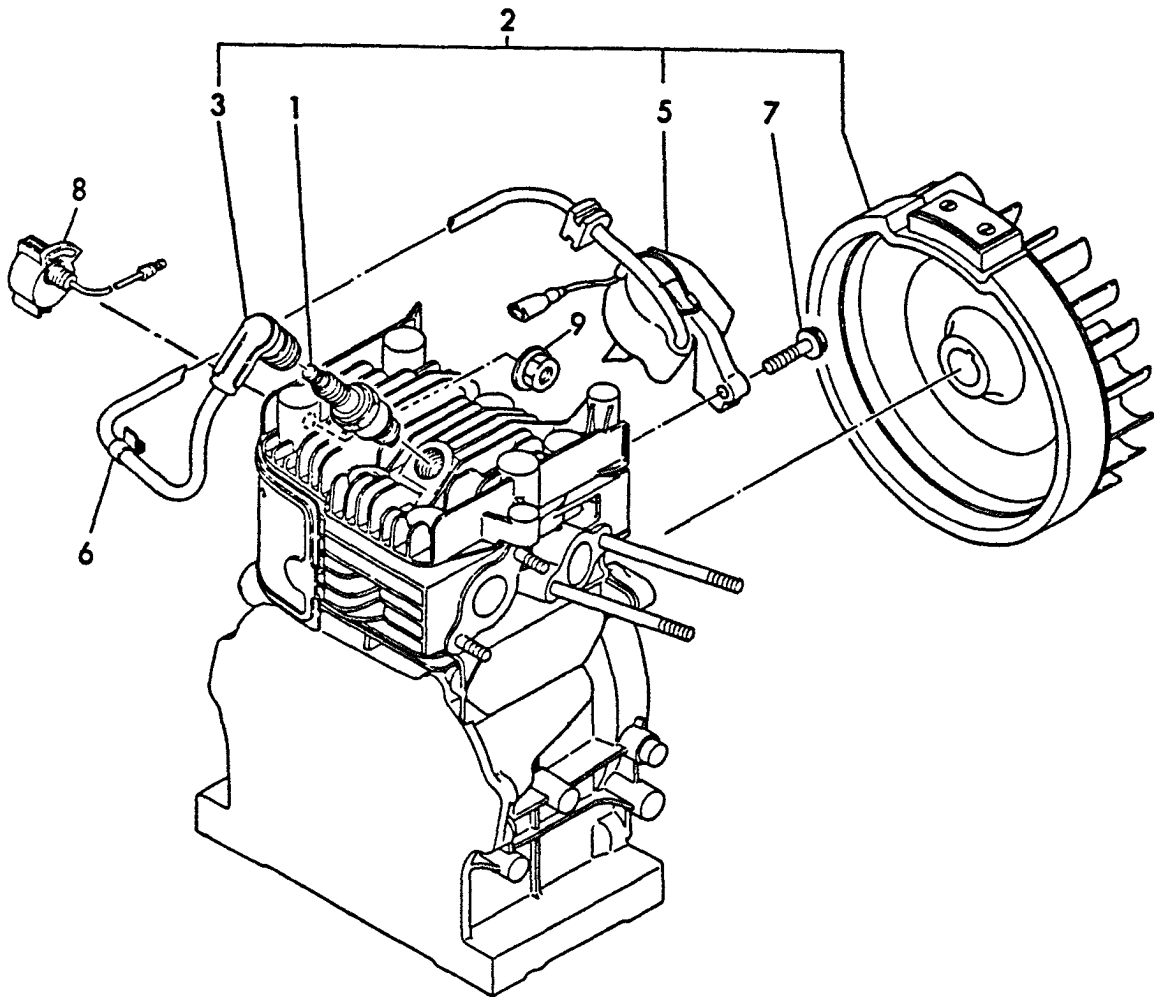
REF. NO.	LEV. 0	PART NO.	DESCRIPTION	-----Q'TY-----					
				(A)	(B)	(C)	(D)	(E)	(F)
1	.	Y 183621-74110	GENERATOR 1.3KVA	1					
2	..	Y 183621-74200	STATOR ASSY.	1					
4	...	Y 183621-74280	COVER, REAR	1					
5	...	Y 183620-74240	HOLDER, BRUSH	1					
6	...	Y 183620-74220	BRUSH (+)	1					
7	...	Y 183620-74230	BRUSH (-)	1					
8	...	Y 183621-74170	A.V.R.	1					
9	...	Y 183820-74300	SCREW M5X14	2					
10	...	Y 183720-74460	RECTIFIER	1					
11	..	Y 183820-74350	ROTOR ASSY.	1					
12	...	Y 183620-74360	BEARING	1					
13	..	Y 183621-74400	COVER	1					
14	..	Y 183620-74410	BOLT	4					
15	..	Y 22217-060000	SPRING WASHER	4					
16	..	Y 183620-74430	BOLT	1					
17	..	Y 22217-080000	SPRING WASHER	1					
18	..	Y 183520-91290	SCREW M4X8	3					
19	.	Y 183621-74760	BAND	1					
20	.	Y 26106-060082	BOLT M6X8	1					
21	.	Y 183621-74450	WIRE, EARTH	1					
22	.	Y 26113-060162	BOLT M6X16	1					
23	.	Y 26753-060002	NUT M6	1					

17 STARTING DEVICE



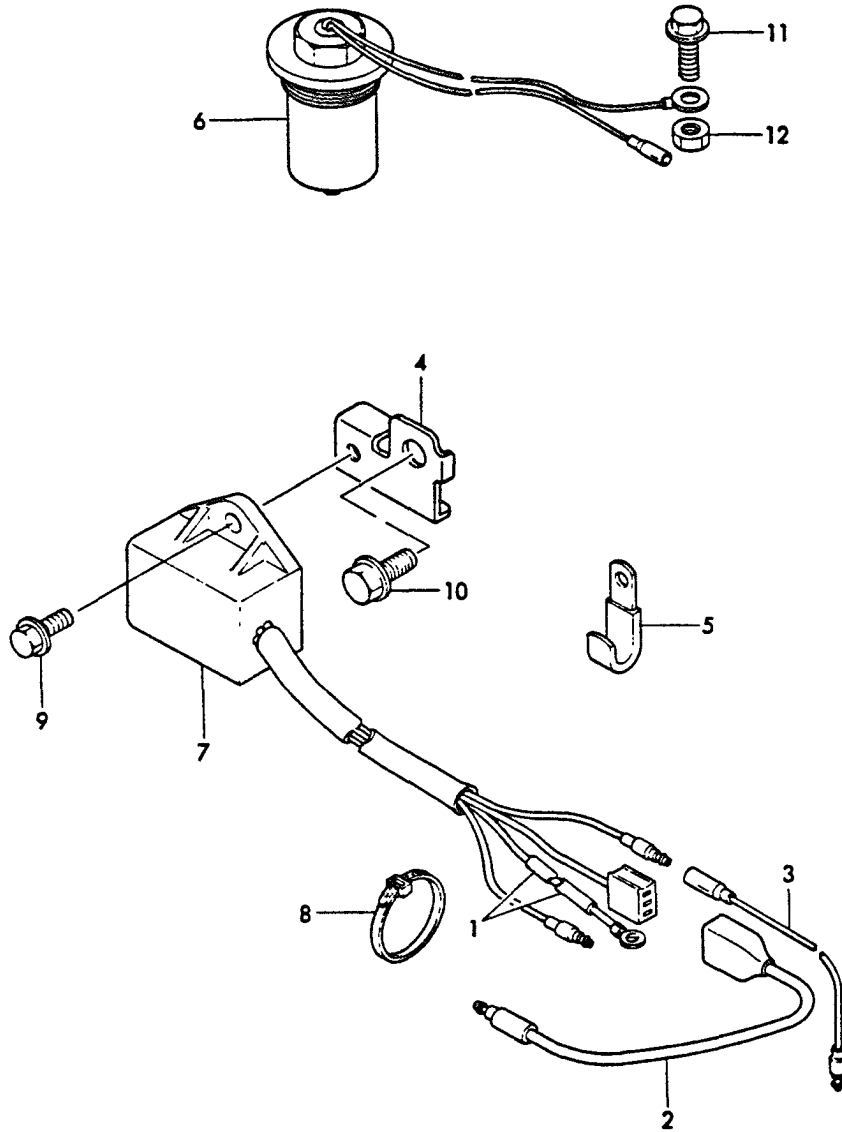
REF. NO.	LEV. 0	PART NO.	DESCRIPTION	-----Q'TY-----					
				(A)	(B)	(C)	(D)	(E)	(F)
1	.	Y 160640-76050	STARTER ASSY, RECOIL	1					
2	..	Y 160640-76250	RECOIL ASSY	1					
3	...	Y 160640-76510	CASE, STARTER	1					
4	...	Y 160610-76520	REEL	1					
5	...	Y 160610-76530	RATCHET	1					
6	...	Y 160710-76540	SPIRAL SPRING	1					
7	...	Y 160610-76550	WASHER, THRUST	1					
8	...	Y 160640-76560	SPRING, FRICTION	1					
9	...	Y 160610-76580	FRICTION PLATE	1					
10	...	Y 160260-76610	ROPE ASSY	1					
11	Y 160260-76620	KNOB, STARTER	1					
12	Y 160260-76630	ROPE, STARTER	1					
13	...	Y 22217-060000	SPRING WASHER 6	1					
14	...	Y 26717-060002	NUT M6	1					
15	..	Y 160610-76590	PULLEY, STARTER	1					
16	.	Y 26106-060122	BOLT M6X12	3					

18 FLYWHEEL MAGNETO & STOP SWITCH



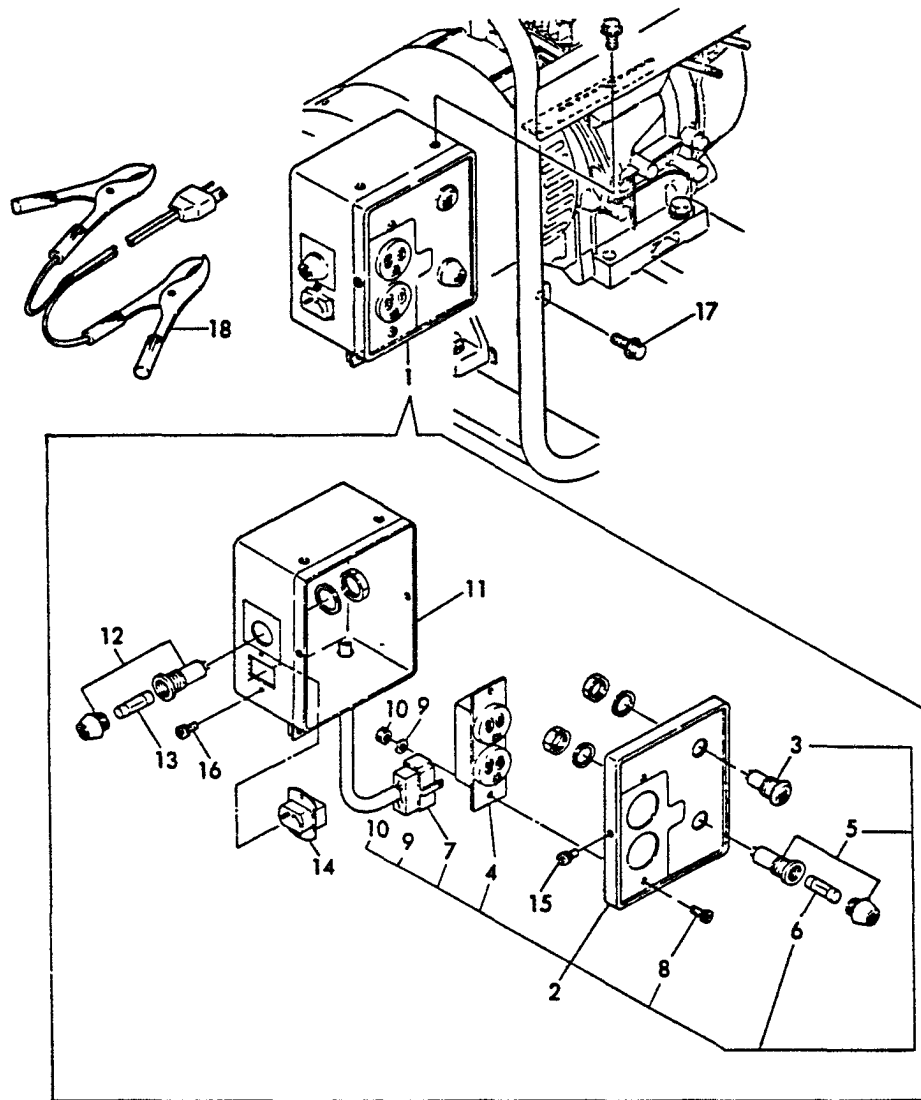
REF. NO.	LEV. 0	PART NO.	DESCRIPTION	-----Q'TY-----					
				(A)	(B)	(C)	(D)	(E)	(F)
1	.	Y160232-78010	SPARK PLUG	1					
2	.	Y160641-78060	FLYWHEEL MAGNET ASSY	1					
3	..	Y160343-78040	CAP, PLUG	1					
5	..	Y160611-78510	IGNITION COIL	1					
6	.	Y160710-78700	CLAMP	1					
7	.	Y26476-060252	BOLT M6X 25	2					
8	.	Y160611-77250	STOP SWITCH	1					
9	.	Y26366-080002	NUT M8	1					

19 OIL SENSOR



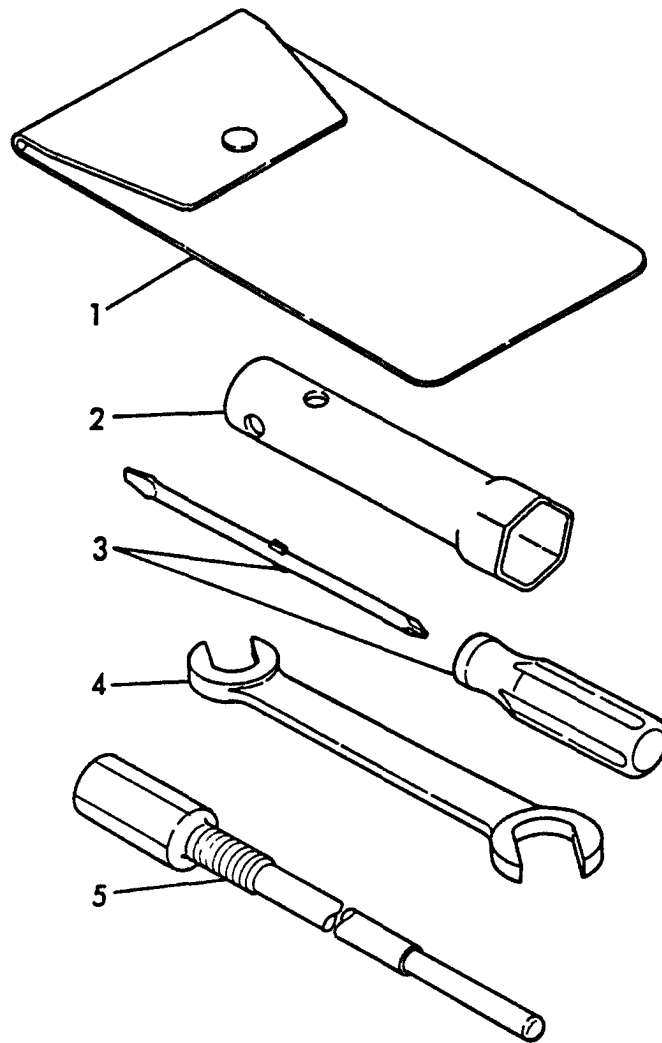
REF. NO.	LEV. 0	PART NO.	DESCRIPTION	-----Q'TY-----					
				(A)	(B)	(C)	(D)	(E)	(F)
1	.	Y 160810-03400	TUBE, PROTECTIVE	1					
2	.	Y 160671-78200	WIRE	1					
3	.	Y 160671-78230	WIRE	1					
4	.	Y 160671-78350	STAY, SENSOR UNIT	1					
5	.	Y 160260-78700	CLAMP	1					
6	.	Y 160710-78800	SENSOR, OIL LEVEL	1					
7	.	Y 160671-78810	UNIT, OIL SENSOR	1					
8	.	Y 160370-78950	CLAMP	2					
9	.	Y 26106-060122	BOLT M 6X 12	1					
10	.	Y 26106-080142	BOLT M 8X 14	1					
11	.	Y 26113-060162	BOLT M 6X 16	1					
12	.	Y 26753-060002	NUT M 6	1					

20 PANEL



REF. NO.	LEV. 0	PART NO.	DESCRIPTION	-----Q'TY-----					
				(A)	(B)	(C)	(D)	(E)	(F)
1	.	Y 183621-91080	PANEL BOX ASSY	1					
2	..	Y 183621-91210	PANEL ASSY	1					
3	...	Y 183820-91320	LAMP 100V	1					
4	...	Y 183920-91320	SOCKET 120V	1					
5	...	Y 183620-91230	HOLDER, FUSE	1					
6	...	Y 183621-91560	FUSE 12.8A	1					
7	...	Y 183621-91370	WIRE HARNESS	1					
8	...	Y 26022-040082	SCREW M4X8	2					
9	...	Y 22117-040000	WASHER 4	2					
10	...	Y 21727-040002	NUT M4	2					
11	..	Y 183621-91360	BOX ASSY	1					
12	..	Y 183620-91230	HOLDER, FUSE	1					
13	..	Y 183720-91240	FUSE 15A	1					
14	..	Y 183720-91250	SOCKET	1					
15	..	Y 26022-040082	SCREW M4X8	2					
16	..	Y 26022-030102	SCREW M3X10	2					
17	.	Y 26106-060082	BOLT M6X8	3					
18	.	Y 183210-91880	CABLE	1					

21 TOOLS



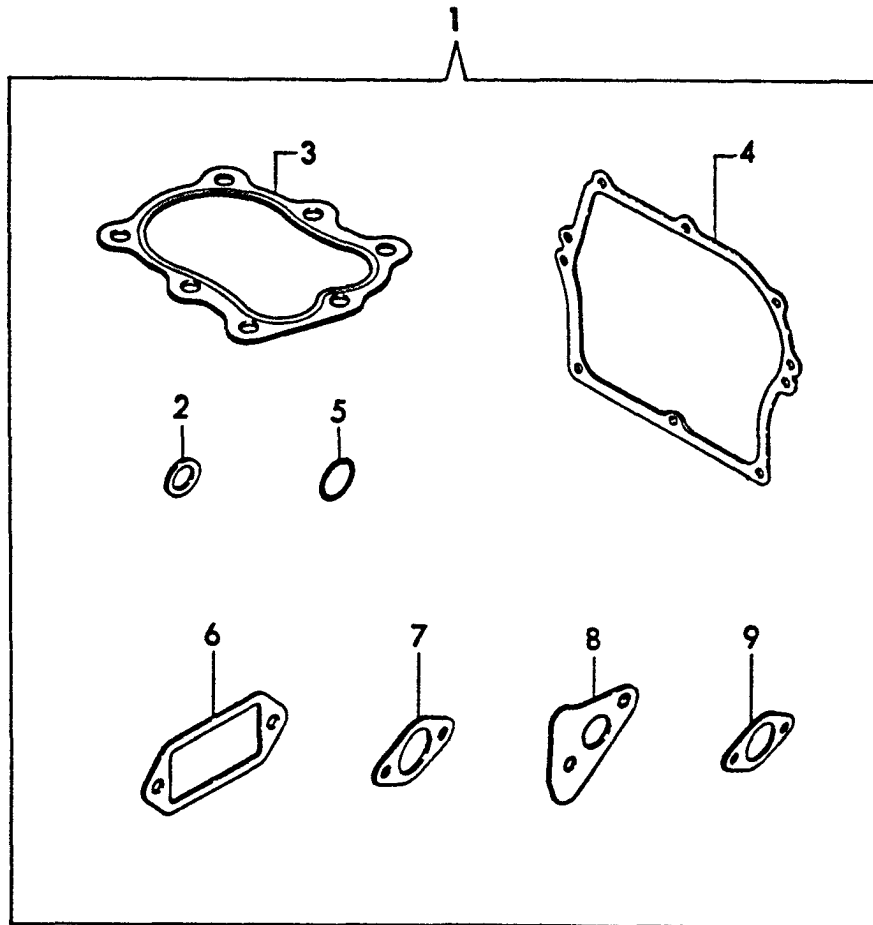
+-----+
 | 1C06 |
 | (1B01) |
 +-----+

(21) TOOLS

(A)=EG1500 (D)=
 (B)= (E)=
 (C)= (F)=

REF. NO.	LEV. 0	PART NO.	DESCRIPTION	-----Q'TY-----					
				(A)	(B)	(C)	(D)	(E)	(F)
1	.	Y 160110-92610	TOOL BAG	1					
2	.	Y 160120-92700	BOX SPANNER 21	1					
3	.	Y 160330-92730	SCREWDRIVER	1					
4	.	Y 28110-100120	SPANNER 10X 12	1					
5	.	Y 183621-92350	REMOVAL TOOL, ROTOR	1					

22 GASKET SET (OPTIONAL)



+-----+
 | 1C07 |
 | (1B01) |
 +-----+

(22) GASKET SET(OPTIONAL)

(A)=EG1500 (D)=
 (B)= (E)=
 (C)= (F)=

REF. NO.	LEV. 0	PART NO.	DESCRIPTION	-----Q'TY-----					
				(A)	(B)	(C)	(D)	(E)	(F)
1	.	Y 760671-92600	GASKET SET	1					
2	..	Y 104200-59170	GASKET 12	1					
3	..	Y 160611-01330	GASKET, CYL. HEAD	1					
4	..	Y 160610-01410	GASKET	1					
5	..	Y 24311-000180	O-RING P18	1					
6	..	Y 160610-03070	GASKET, BREATH. COVER	1					
7	..	Y 160610-56150	GASKET, CARBURETOR	3					
8	..	Y 160610-13201	GASKET, MUFFLER	1					
9	..	Y 160310-13200	GASKET, MUFFLER	1					